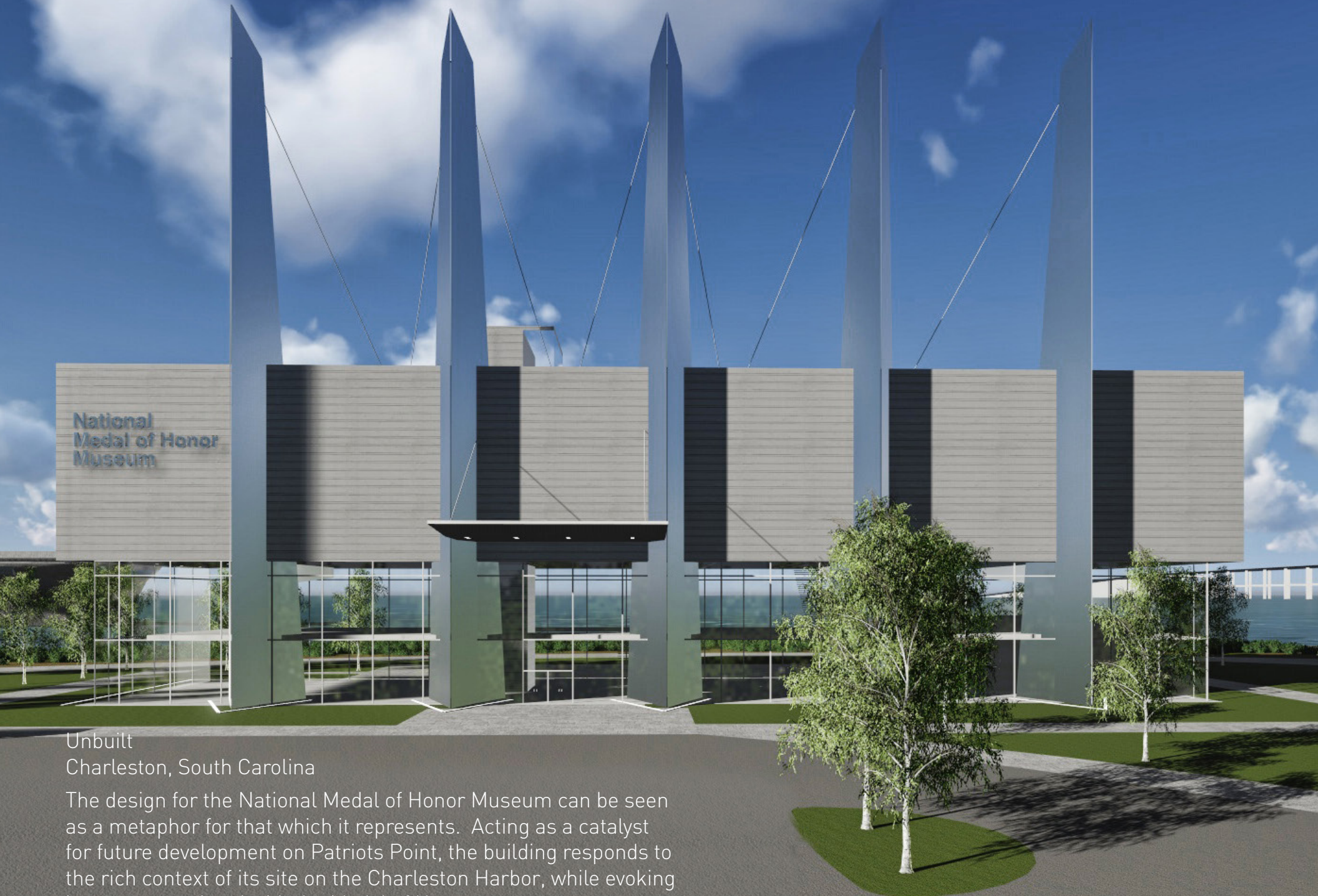


National Medal of Honor Museum

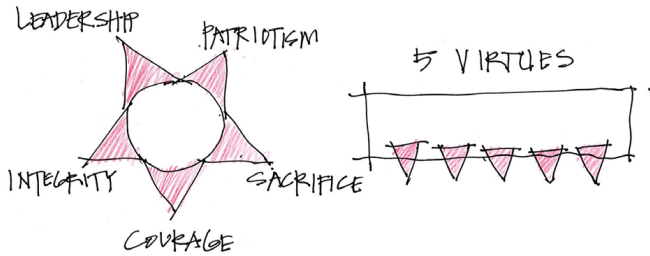


Unbuilt
Charleston, South Carolina

The design for the National Medal of Honor Museum can be seen as a metaphor for that which it represents. Acting as a catalyst for future development on Patriots Point, the building responds to the rich context of its site on the Charleston Harbor, while evoking imagery associated with the Medal of Honor.

Courage Integrity Sacrifice Patriotism Leadership

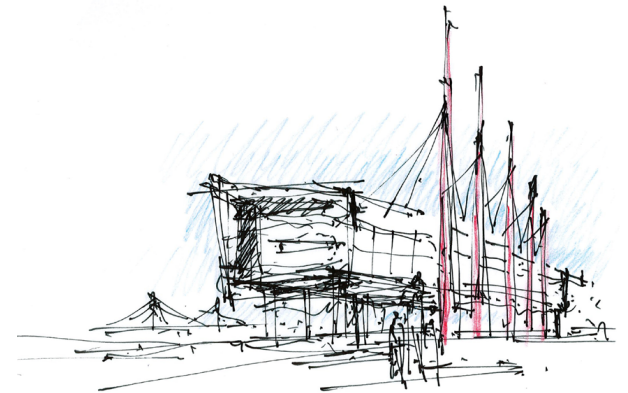
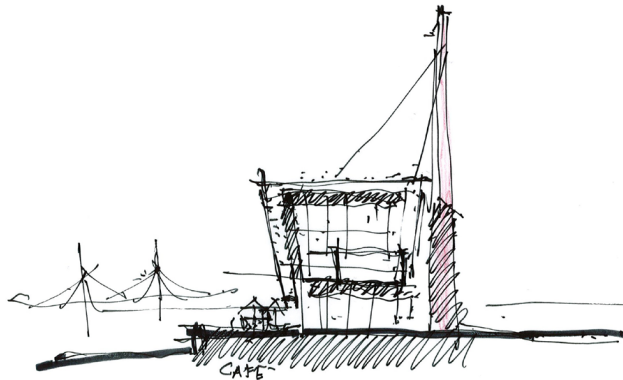
Five stainless steel monoliths standing crisp, bright, strong, unchanging, and unwavering represent the ideals and values of the Medal – Courage, Integrity, Patriotism, Leadership and Sacrifice. The visually heavy mass of the museum proper, intended to represent the weight of responsibility that Medal recipients bear, is delicately carried by the columns of stainless steel, representative of the tenuous relationship between our freedom and those that protect it and assure its perpetuity.



5 VIRTUES OF THE
MEDAL OF HONOR.

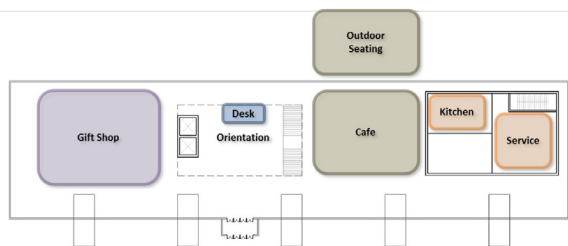
5 BRANCHES OF THE ARMED FORCES

- ARMY, NAVY, AIR FORCE, MARINES, COAST GUARD

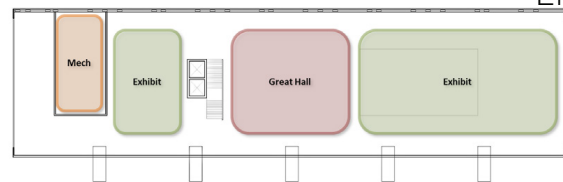




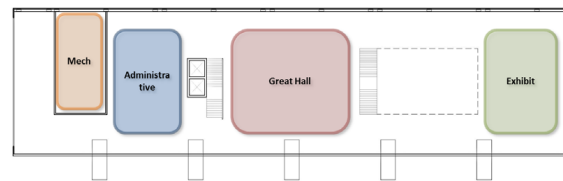
Charleston, South Carolina



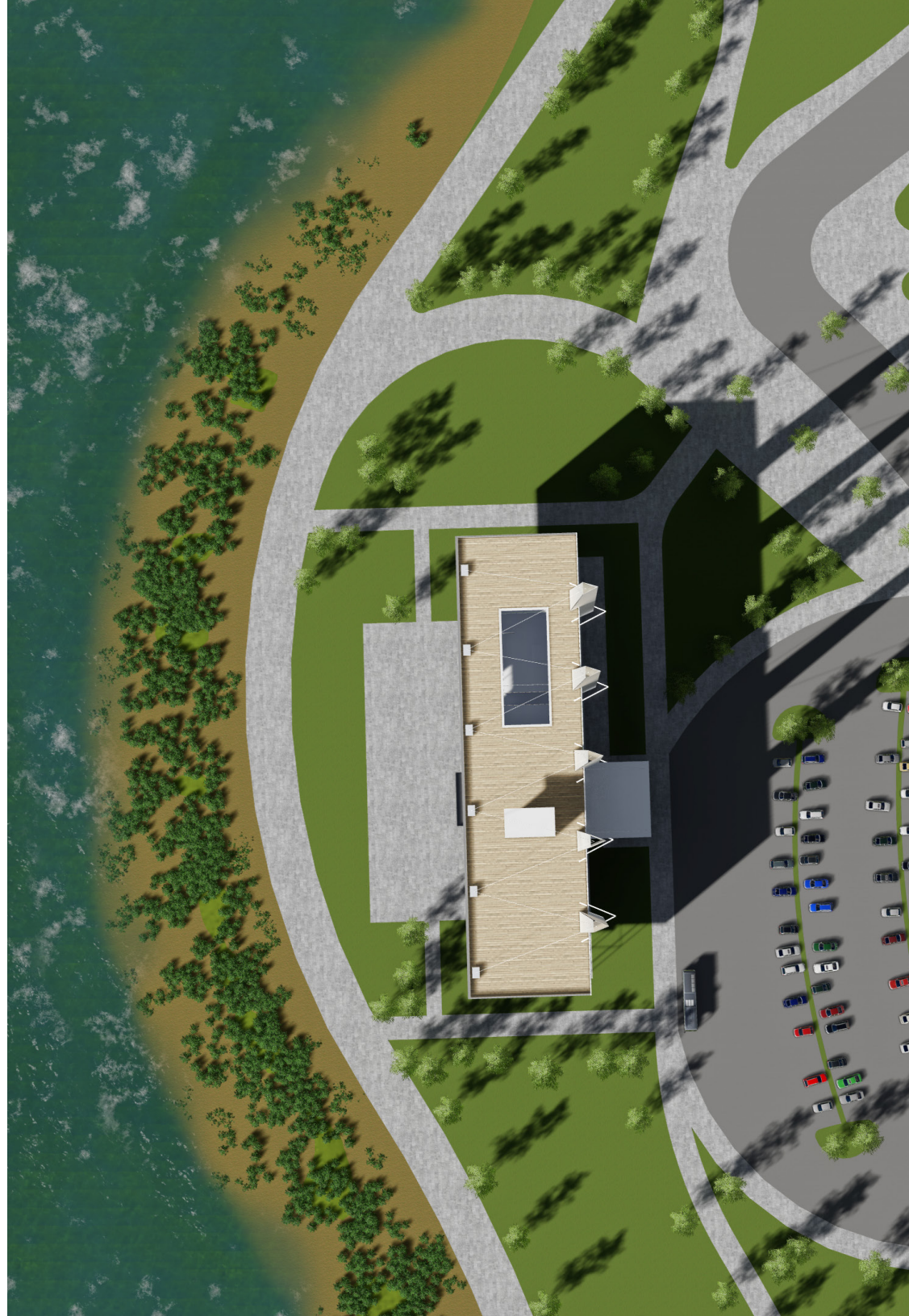
Entry Level



Floor 3



Floor 4



Contextually, the design draws inspiration from its surroundings, particularly the Ravenel Bridge—a beloved part of the Charleston skyline—that crosses the harbor to the north, while the singular massive form of the museum itself draws parallels to that of the USS Yorktown, which is docked to the southwest.









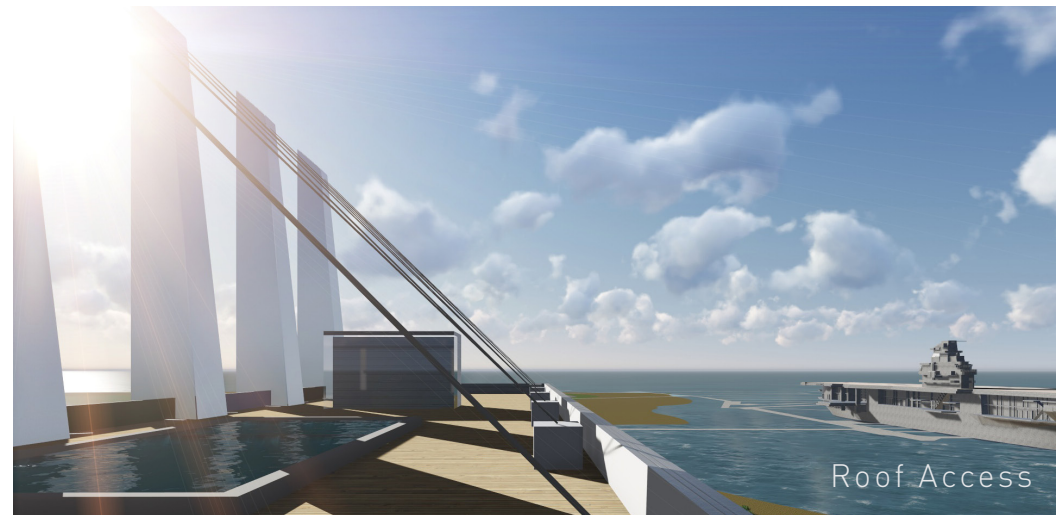
West



Hall of Valor



Balcony



Roof Access



National
Medal of Honor
Museum

Entry View at Dusk