

# Port Canaveral Exploration Tower

Cultural / Institutional  
Port Canaveral, Florida

---

The iconic new Port Canaveral Exploration Tower expresses the common characteristics—transience, function and imagery—of the region’s many stories: cruising, the space coast, the military, nature, and beaches.

The building’s dynamic form and features—protective shell, exposed structure and iridescent skin—contribute to a constant sense of movement as the sun plays across the structure and evokes imagery of the port and the surrounding area. A rocket ready to launch, a surfboard in the sand, a ship’s hull, a rocket contrail: all can be seen in the structure’s striking presence.





# Function

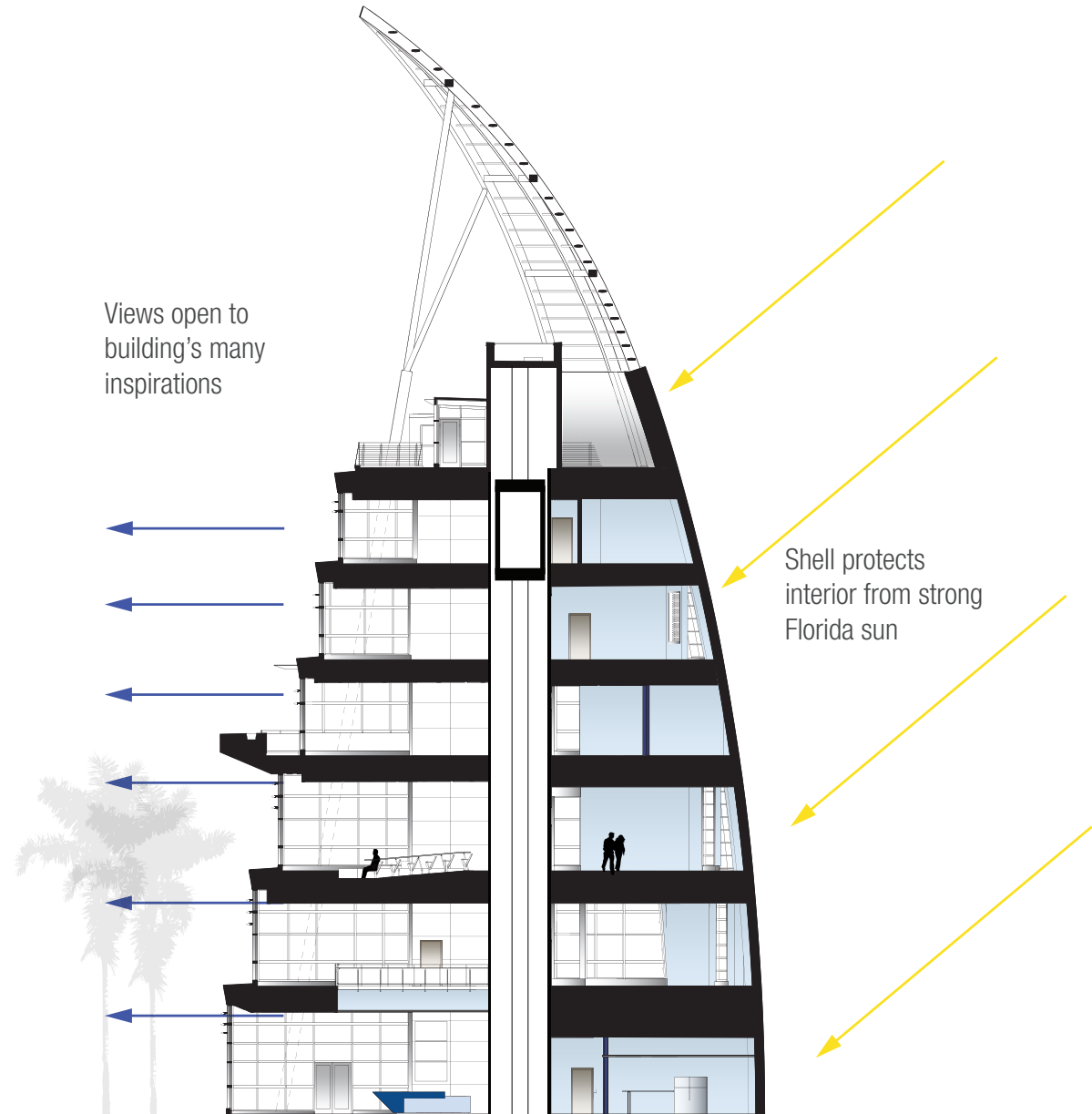
Function driven form is common to the aesthetics associated with Port Canaveral, from curvilinear organic shapes observed in seashells and aquatic life, to the advanced marine and aerospace engineering associated with Florida's Space Coast. The Exploration Tower's protective south-facing "shell" protects the interior from the strong Florida sun allowing the other exposures to be opened up to panoramic views of the Port and Cape Canaveral. The building's curvilinear form is designed to take advantage of the daily ocean breezes, as well as withstand potential hurricane force winds

# Transience

The transitory nature of the site is unique and ever-present; the coming and going of cruise ships and cargo transports, as well as planes and submarines from neighboring Air Force and Naval Stations, and NASA's spectacular rocket launches. The Tower's protective metal skin responds to this transience and is coated with an iridescent paint that subtly shifts from warm white tones to cooler white tones depending on the observer's movement around the building and sun's positioning.

# Imagery

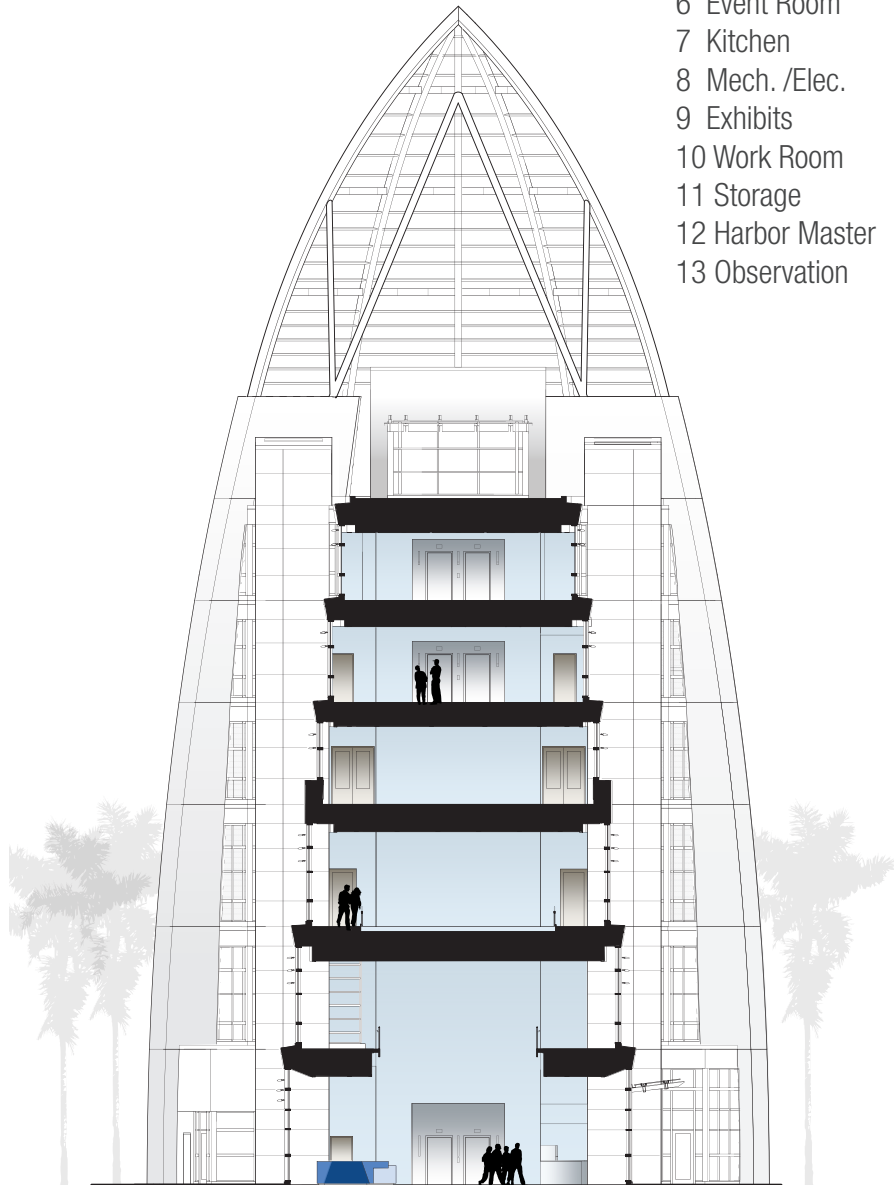
The Exploration Tower's shape is informed by strong local imagery found along the Florida coast. The building's tapered and curvilinear form is reminiscent of a shuttle preparing for launch, tall industrial silos along the Port, and surfboards propped in the sand along nearby Cocoa Beach. The tower's profile is inspired by rocket contrails, prominent climbing arcs familiar to the Florida sky.



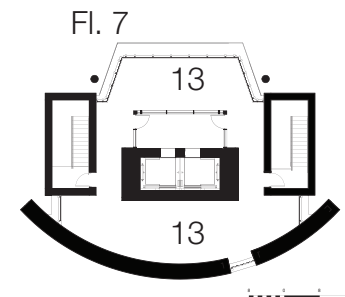
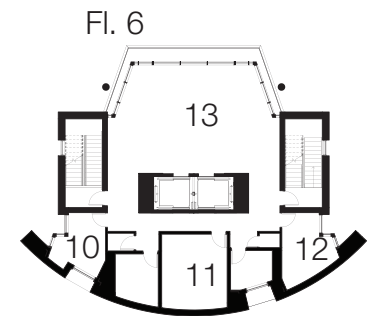
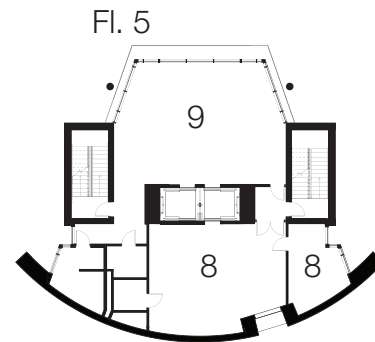
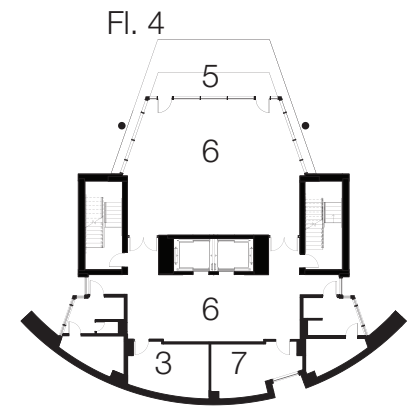
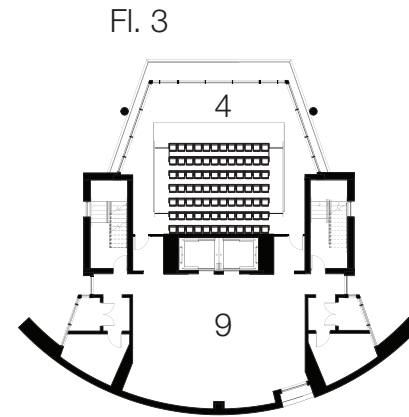
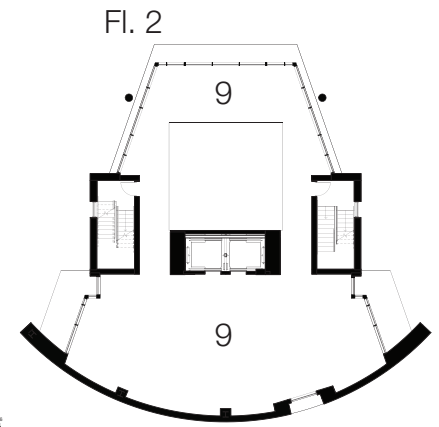
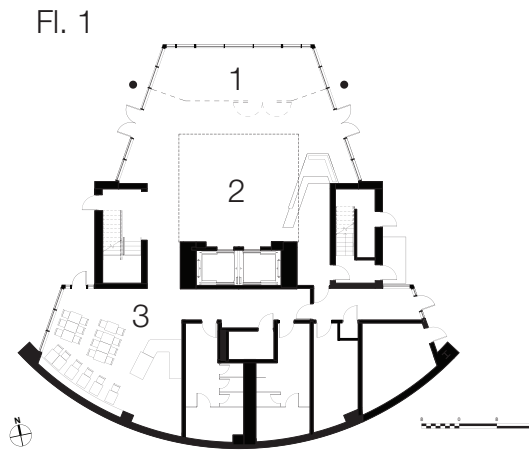
Section East / West



- Legend
- 1 Gift Shop
  - 2 Lobby
  - 3 Cafe
  - 4 Auditorium
  - 5 Terrace
  - 6 Event Room
  - 7 Kitchen
  - 8 Mech. /Elec.
  - 9 Exhibits
  - 10 Work Room
  - 11 Storage
  - 12 Harbor Master
  - 13 Observation



Section North / South





South



Lobby



U-BOATS SINK SHIPS OFF FLORIDA'S COAST

MILITARY SHIPS FREQUENT THE PORT

NOTU: THE MISSILE BOSSES

The Naval Ordnance Test Unit (NOTU) operates the U.S. Navy's largest fleet of test vessels, which include the Navy's most advanced and complex, which date from the 1950s to the present.

NOTU was created in 1960 and the U.S. Navy Test Program (NOTU) program began in 1961. The program began with the acquisition of the USS (SS-563) and USS (SS-564) in 1961. NOTU's primary role is to provide test and evaluation (T&E) services to ensure that they are effective and on target.

Exhibit



Theater

Theater





Roof Deck





North