

Nursing + Allied Health Building, Harford Community College
Bel Air, Maryland
Higher Education

The Nursing + Allied Health Center at Harford Community College is the **NEW LEARNING ENVIRONMENT** for multi-discipline health related curriculums. The 50,000sf 3-story new building consists of a simulation center, laboratories, active-learning classrooms, conference center and a learning commons. The simulation center and laboratories create a real workplace context for nursing teams to practice and perform skills, and the active learning classrooms **CONCENTRATE LEARNING THROUGH GROUP EXERCISES**. The focus on **MULTI-DISCIPLINARY** student team projects create the need for space dedicated to outside-the-classroom collaboration. The learning commons is the central spine and contains a **VARIETY** of **ENHANCED LEARNING SPACES**. Glass enclosed group study rooms, with floor-to-ceiling marker surfaces, are technology and projection capable. A three-story light well contains learning stair, which connects the first and second floor offering an informal space for team meetings, individual study or an impromptu lecture. **LEARNING NOOKS** appear as café booths with a wall-mounted screen for technology assisted work, and are located along the corridor for that **SERENDIPITOUS FACULTY MEETING**. Student lounges with soft movable furniture allow students to create their own group study space.

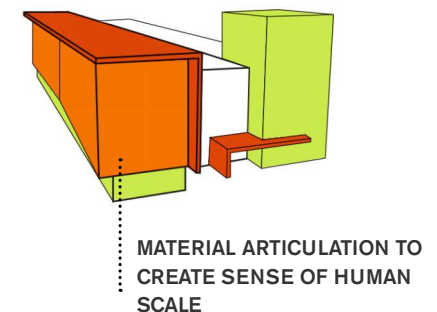
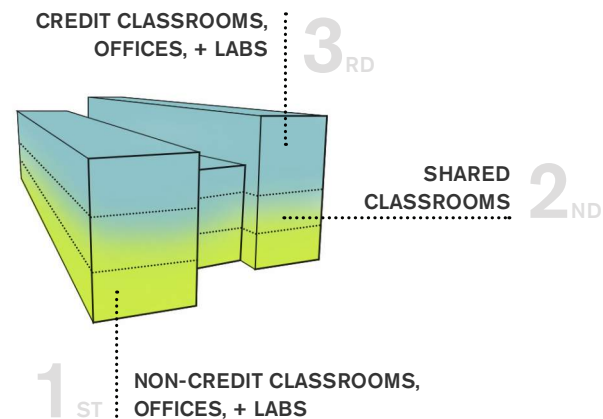
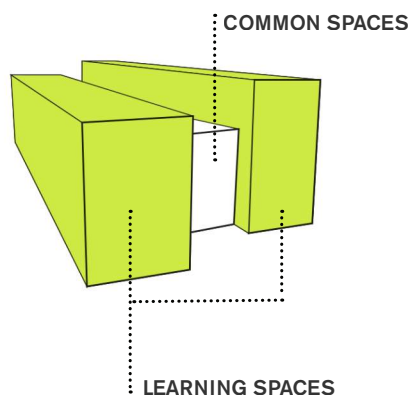
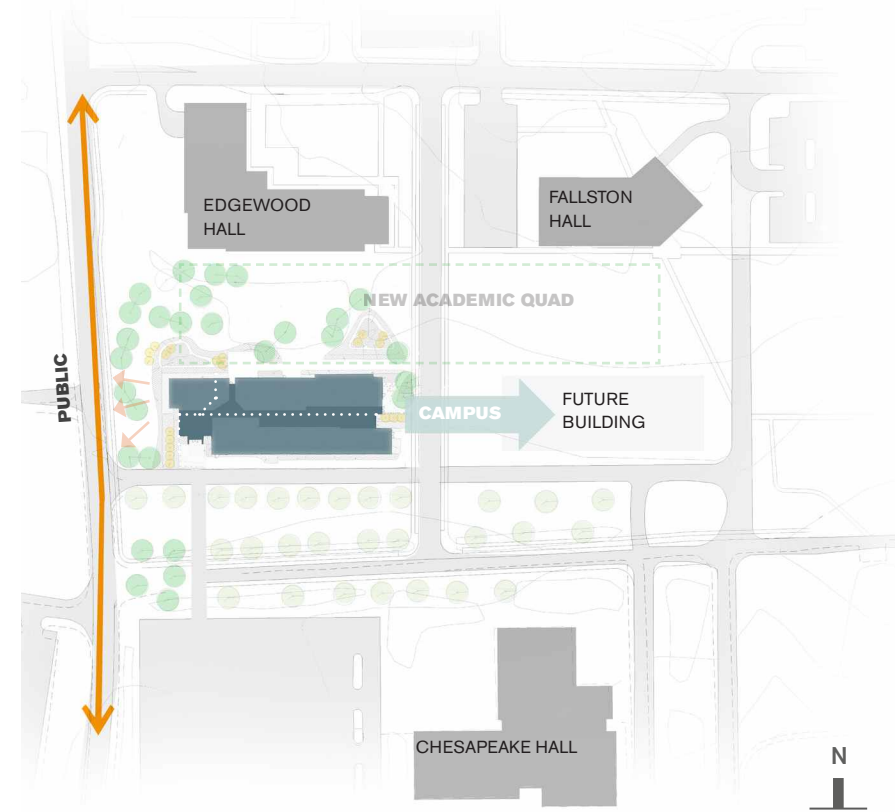


SITE PLAN

The design of the Nursing + Allied Health Building begins at the scale of the campus. **NO BUILDING SITS ALONE**, it is **INFLUENCED BY** and **RESPONDS TO** its **SURROUNDINGS**. The building **INTEGRATES** and **CREATES** meaningful outdoor learning environments. Its location allows the building to act as **FILTER** between the public and the campus. It is both an **ICON** and a **GATEWAY**.

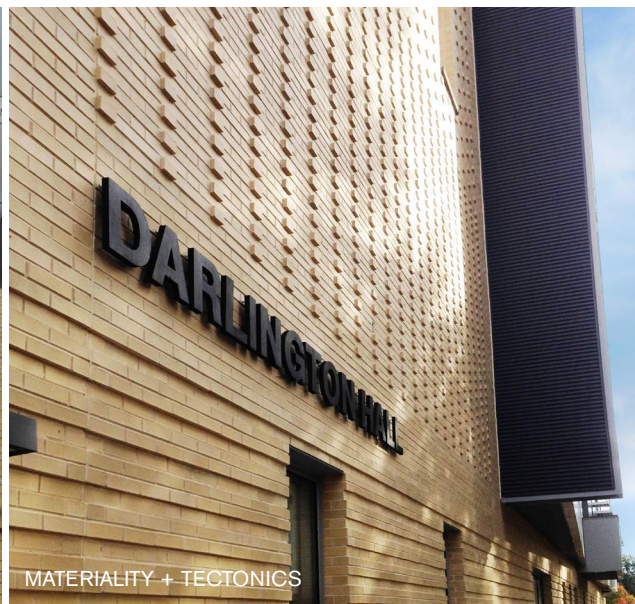
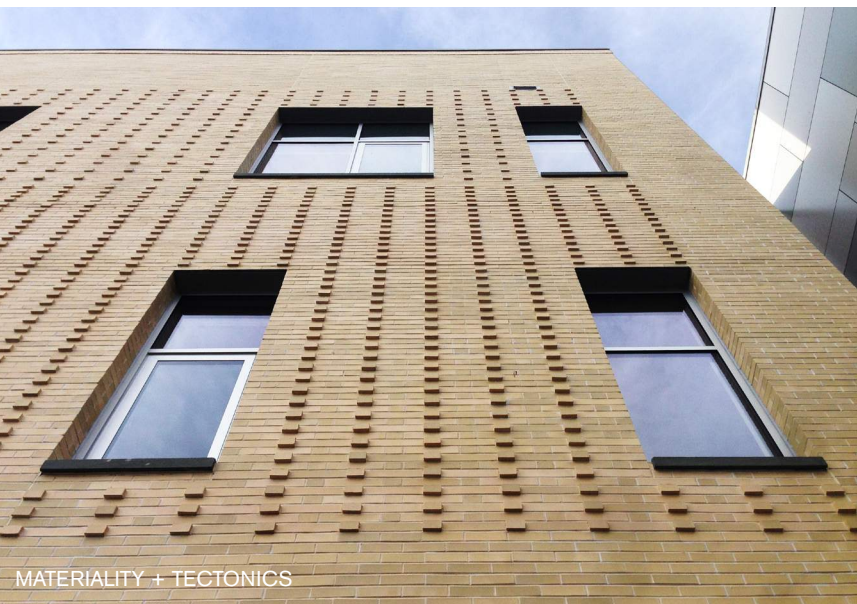
At the scale of the building, we know learning does not stop at the classroom/lab door. It occurs throughout the building and in the landscape. The organization of these formal and informal spaces **CREATES LEARNING OPPORTUNITIES** that **FOSTER COLLABORATION** between students, as well as between students and teachers. Active learning classrooms **EMPOWER STUDENTS** to construct their own learning in collaborative and creative problem-solving exercises. Informal student and group study spaces are also provided throughout the central atrium. Glass-enclosed group study rooms, technology enhanced booths, stadium seating facing the quadrangle and nexus spaces with moveable soft furniture invite students to **CUSTOMIZE THEIR LEARNING ENVIRONMENT** outside of class.

The building houses a two-year nursing program as well as credit and non-credit Allied Health programs. The non-credit program is on the first floor, while the credit program is on the third. The second floor is **SHARED** between both programs and other departments in the college. **ELEVATING THE PUBLIC REALM** to the second floor gives **EQUAL ACCESS** to both programs. Openings within each floor connect all three, **CREATING A WHOLE OUT OF THE SUM OF THE PARTS**.



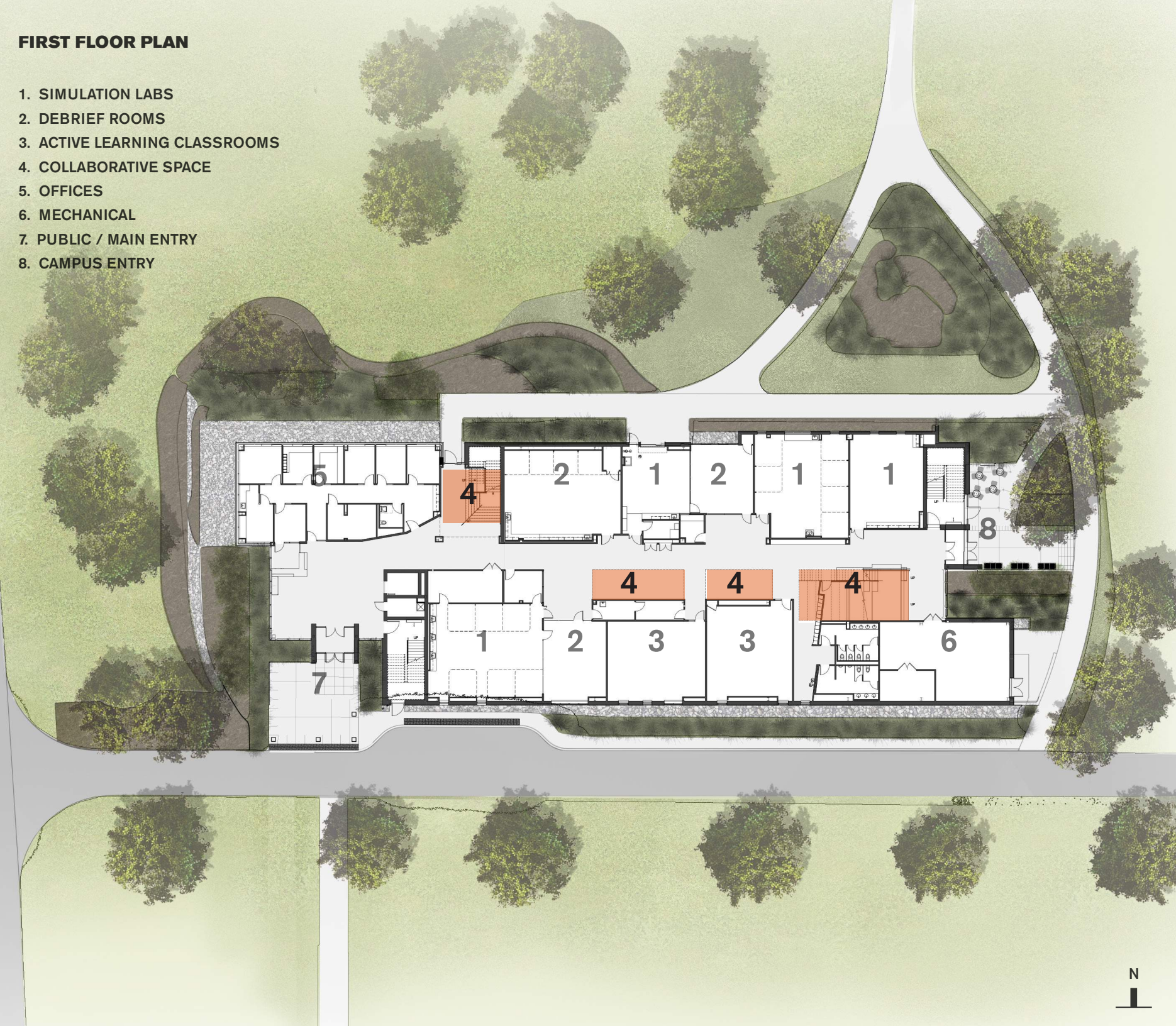


DARLINGTON HALL



FIRST FLOOR PLAN

- 1. SIMULATION LABS
- 2. DEBRIEF ROOMS
- 3. ACTIVE LEARNING CLASSROOMS
- 4. COLLABORATIVE SPACE
- 5. OFFICES
- 6. MECHANICAL
- 7. PUBLIC / MAIN ENTRY
- 8. CAMPUS ENTRY





LEARNING COMMONS - level 2



LEARNING STAIR

LEARNING COMMONS



“CAFE BOOTHS”



INFORMAL LEARNING



GROUND STUDY ROOMS

SECOND FLOOR PLAN

- 1. SIMULATION LABS
- 2. DEBRIEF ROOMS
- 3. ACTIVE LEARNING CLASSROOMS
- 4. COLLABORATIVE SPACE
- 5. OFFICES
- 6. CONFERENCE ROOM
- 7. OUTDOOR CLASSROOM



THIRD FLOOR PLAN



LEARNING COMMONS - level 2





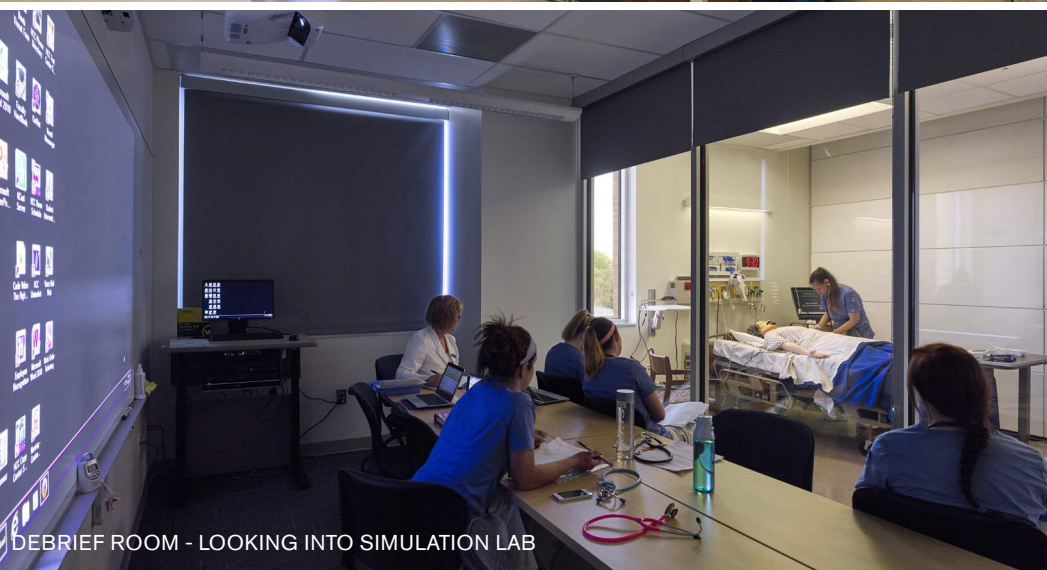
CONTROL ROOM



NURSING LAB



OB + PEDS SIMULATION LAB



DEBRIEF ROOM - LOOKING INTO SIMULATION LAB



NURSING LAB - COLLABORATIVE SPACE



DAN RINGSTON HALL