

**The Smith Center, Mount Saint Joseph High School
Baltimore, Maryland
K-12 Education**

The Mount Saint Joseph Athletic Center consists of a new 56,000 sf state-of-the-art athletic center and 32,000 sf renovation of the Memorial Field House.

The **TWO BUILDING MASSES ARE CONNECTED** by Memorial Walk, a swooping glassed enclosed volume. This volume **ANCHORS BOTH BUILDINGS**, while creating a backstop to the school's stadium. Memorial Walk, just as importantly, **GESTURES BACK TO THE MAIN CAMPUS LINKING BOTH**.

Memorial Walk contains the AD office suite, concessions, restrooms, school store, board room, and 3,000 sf of gathering space for alumni and display of school history. The board room looking back toward the main campus is defined by a purple glass cross incorporated into the exterior curtainwall.

Memorial Walk opens into a diffused, day lit basketball arena. The Arena seats 1,000 spectators for basketball games. The Arena is designed to accommodate three practice courts, school assemblies, wrestling tournaments, and alumni events.

The lower level of the arena is surrounded by a new 3,500 sf fitness center, three-ring wrestling room, training suite, coaches offices, and new team locker rooms and concessions. This level connects to the renovated basement of the Memorial Field House and the main parking lot serving the Athletic Center.

Acting as **CONNECTOR**, the **"GREAT HALL" ORGANIZES THE SPACE BETWEEN** the two buildings as well as the main parking lot and Memorial Walk.



The Smith Center from Campus



THE SMITH

Lower Entry Plaza



Mount Saint Joseph Tower:
Built in the 19th Century, it is the oldest remnant of the campus' founding

Visual Link

Physical Link:
Pedestrian bridge

Memorial Walk

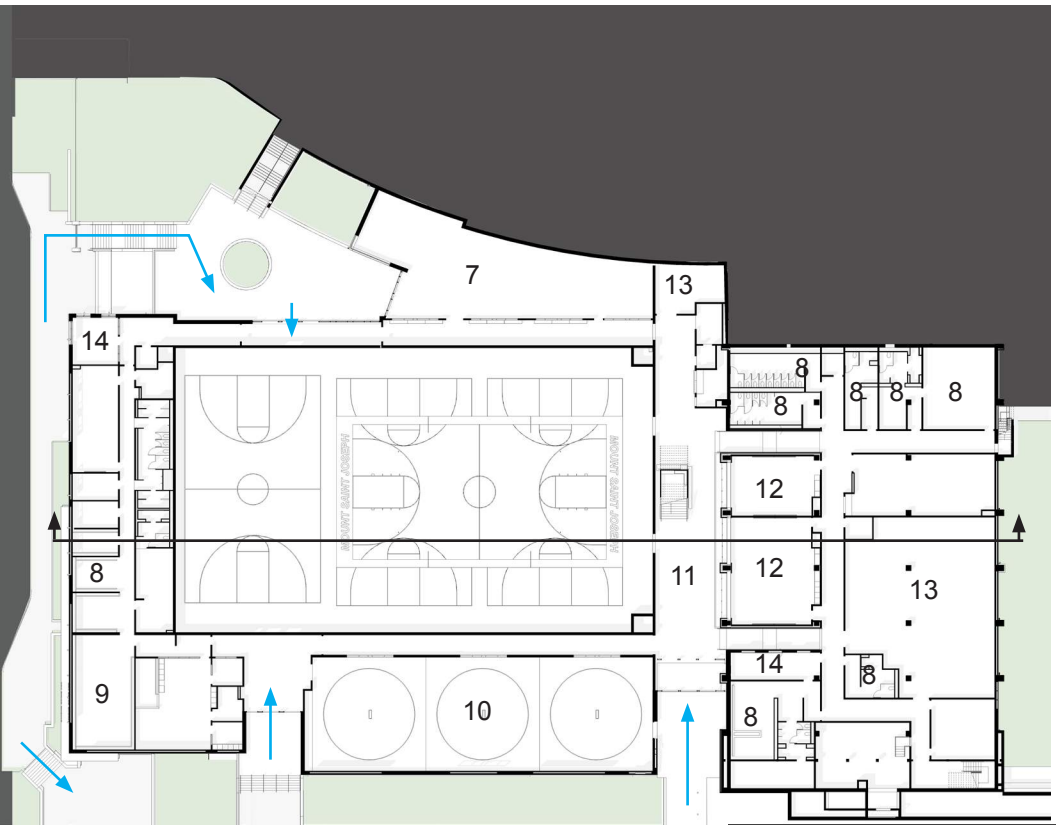
Memorial Field House:
The oldest remaining building on Campus. Est. 1968

New Arena

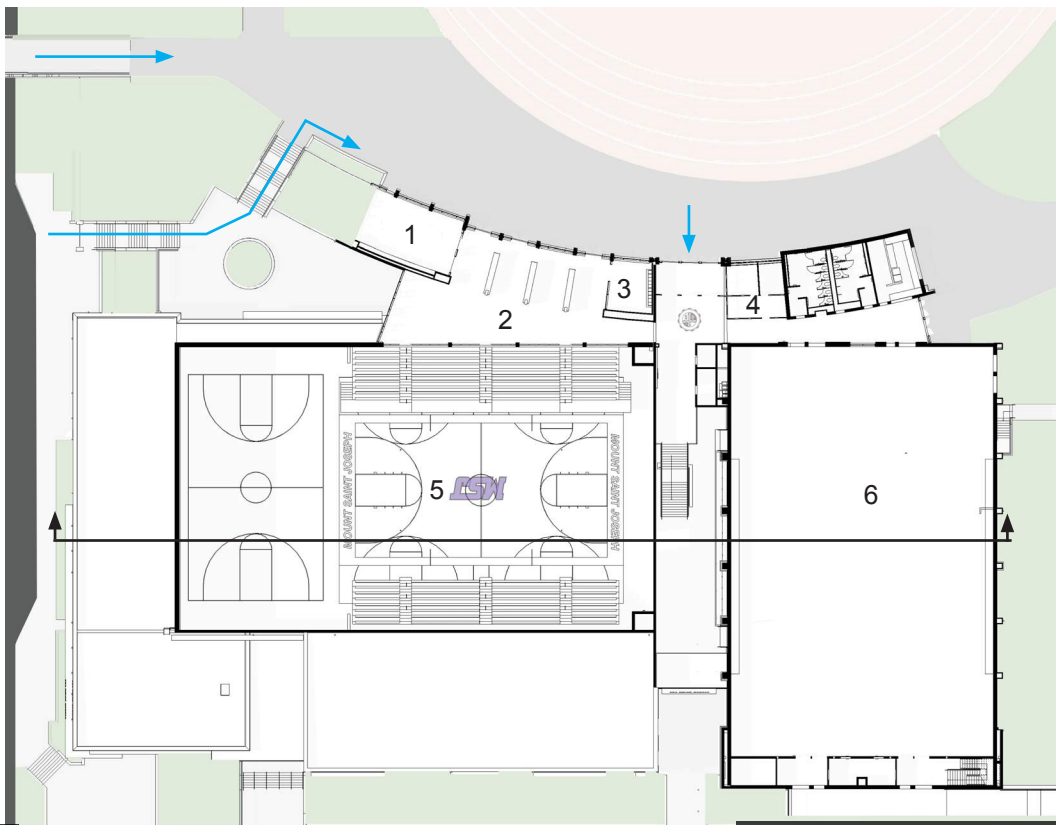
Great Hall:
The link between the physical past and future

Vehicular Circulation

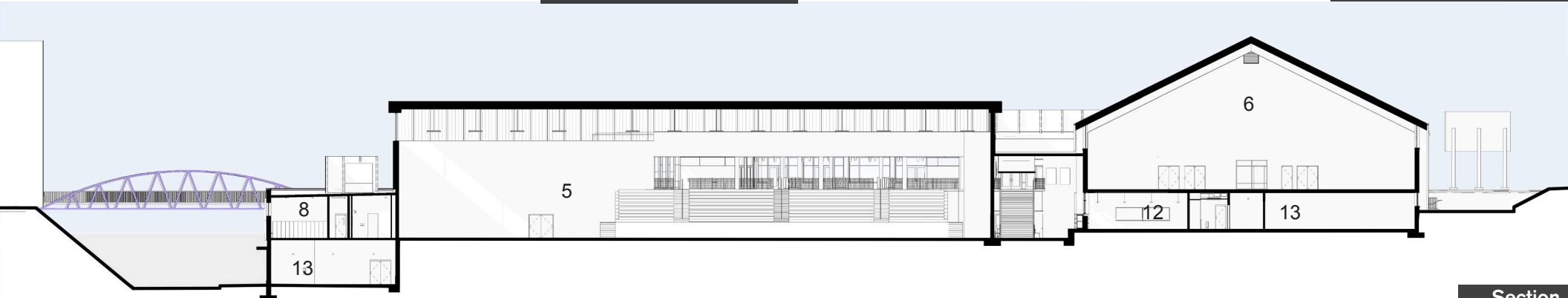




Arena Level Floor Plan 177'4"



Entry Level Floor Plan 192'



Section

- 1 Alumni Event Room
 - 2 Memorial Walk
 - 3 School Store
 - 4 AD Offices
 - 5 Arena
 - 6 Memorial Field House
 - 7 Fitness Center
 - 8 Lockers
 - 9 Training
 - 10 Wrestling Room
 - 11 Great Hall
 - 12 Classroom
 - 13 Storage
 - 14 Coaches' Offices
- Site Circulation + Entry



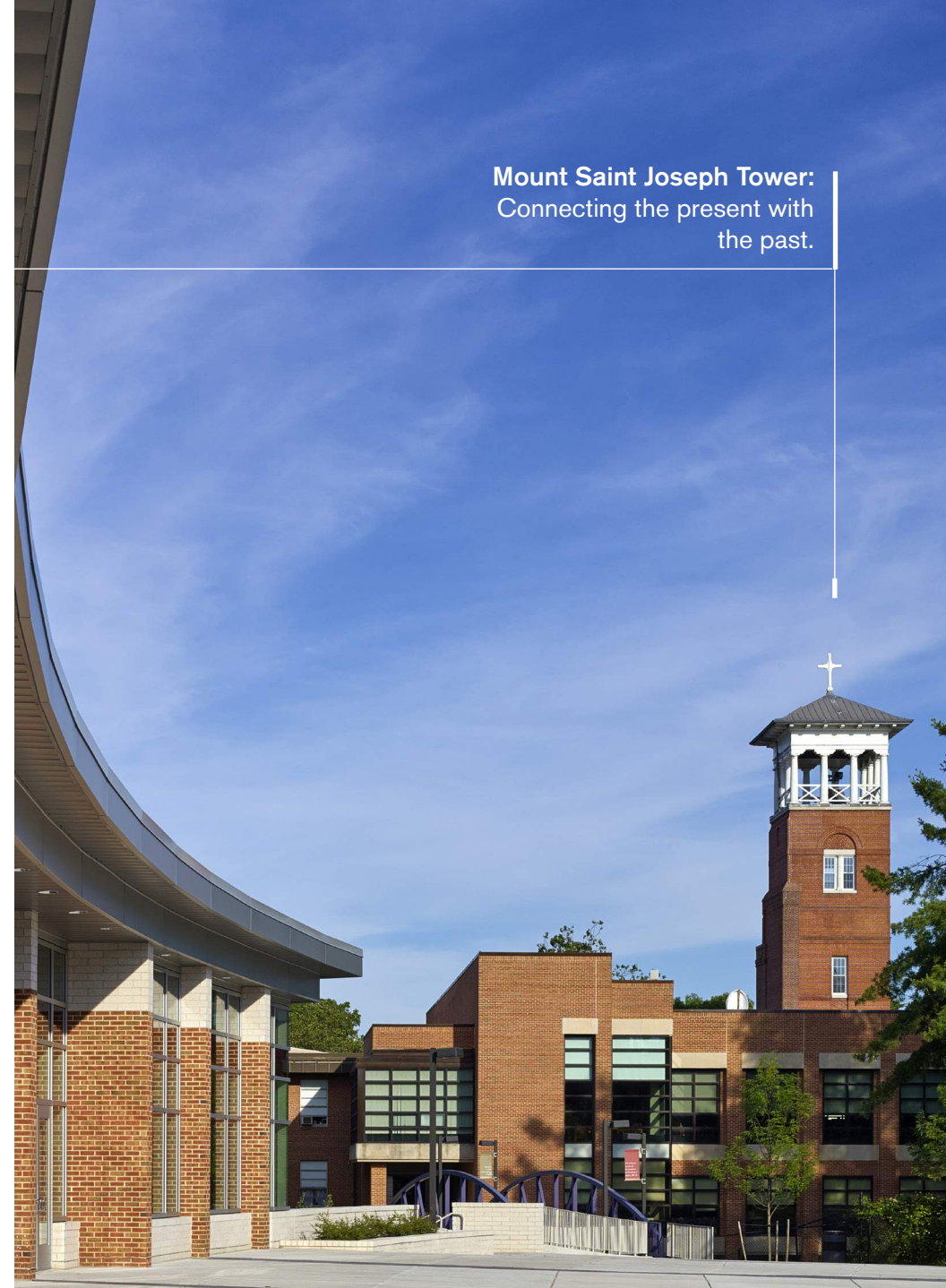
Floor Plans and Section



Memorial Walk at Dusk



Alumni Event Room



Mount Saint Joseph Tower:
Connecting the present with
the past.

Memorial Walk: Connection Back to Campus



Existing Memorial Field:
The exterior is now interior,
old locker rooms have been
converted into classrooms

The Great Hall:
Connects the past with the present.



Memorial Walk:

Displays the school's academic history alongside their athletic history. The purple band of glass directs you towards campus, linking the two.



Arena:

Opening the Arena to Memorial Walk allows spectators to mingle, connect with the school's history while absorbing the crowd's energy.

Diffused natural daylight greatly reduces energy consumption.



Arena