



**FRIENDS SCHOOL OF BALTIMORE,
NEW PERFORMING & VISUAL ARTS CENTER
BALTIMORE, MARYLAND
INSTITUTIONAL ARCHITECTURE**

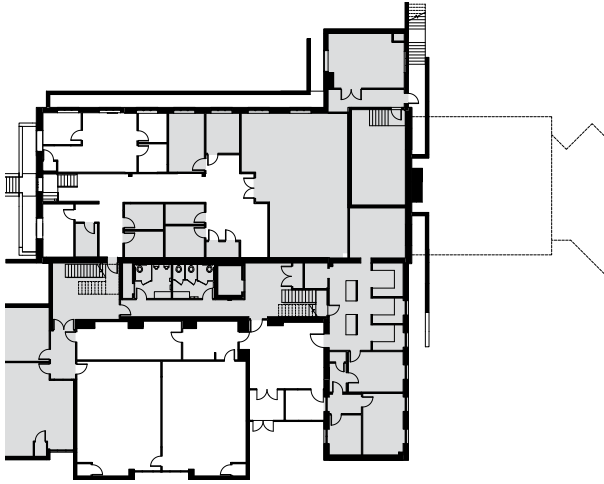
Renovation and additions to the existing flat-floor multi-purpose room revitalize and create a comprehensive state-of-the-art performing and visual arts facility in the heart of this private school's growing campus. A contemporary glass entry pavilion creates a distinct entry and engages the plaza for a unifying point of arrival. A new control room and new theater-style raked seating accommodates the entire school and improves the theater, music and dance capabilities. The ceiling of the main auditorium is removed to expose the steel truss work and to dynamically enrich the interior space, while also providing the ability to more finely tune the acoustic needs of varied performances. Honest, warm and inviting materials further reflect the school's Quaker values.

Additional renovations expand the visual arts programs with large and dedicated photography, printmaking, drawing and painting classrooms, which surround a refurbished gallery for student and guest art work. A small addition on the rear of the building creates important space for a new scene shop, mechanical systems, and access to the above-stage wire tension grid for students to manage the technology of productions.

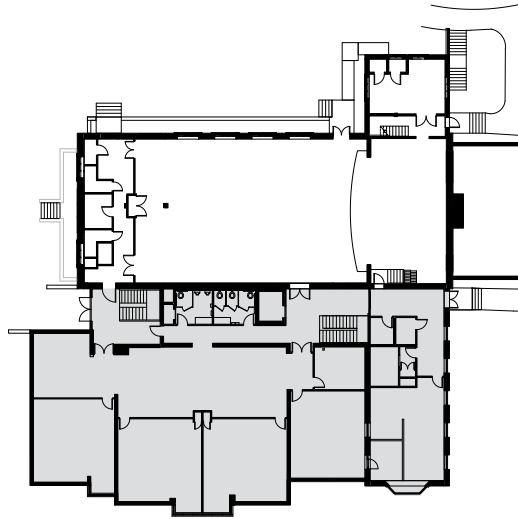
Transforming a Multi-Purpose Room into a State-of-the-Art Performing Arts Center

At first, the School didn't believe their 60-year old flat-floor multi-purpose space could be transformed to provide the desired technical, acoustic, and visual quality for a new performing arts center. Strategic design and thoughtful additions allow for a dramatic transformation.

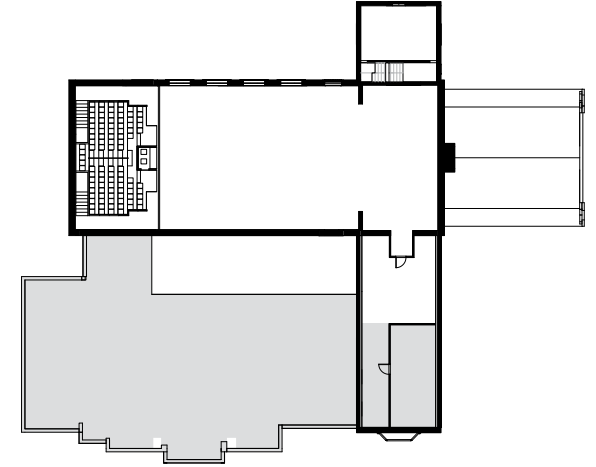
FLOOR PLANS BEFORE RENOVATIONS



First Floor Before

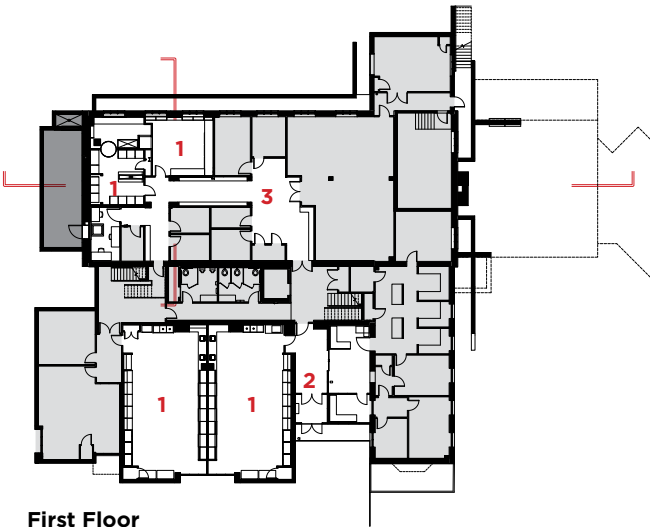


Second Floor Before

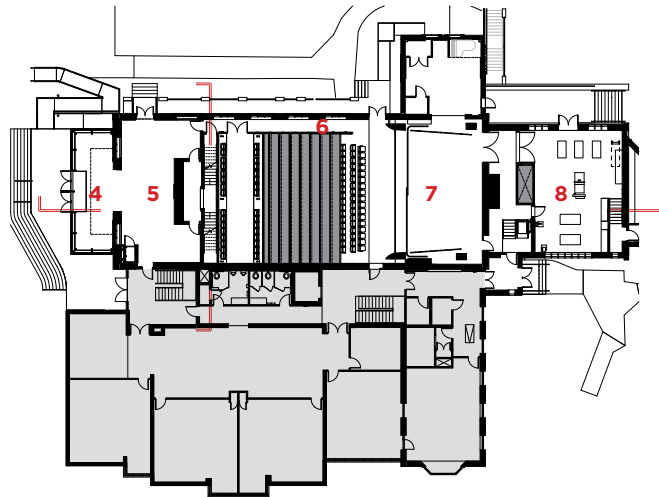


Mezzanine Before

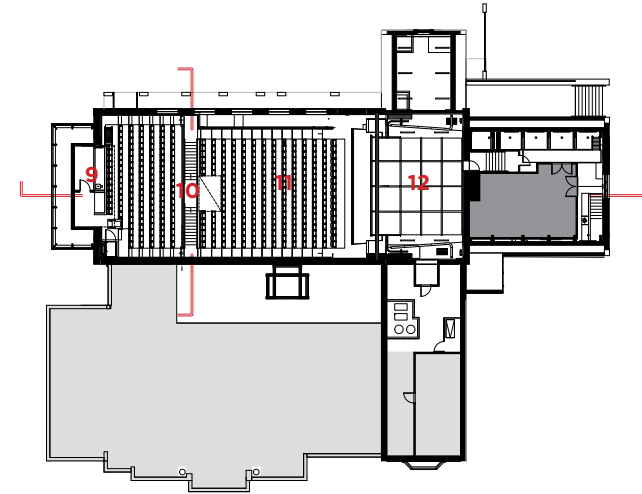
FLOOR PLANS AFTER RENOVATIONS



First Floor

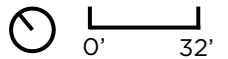


Second Floor



Mezzanine

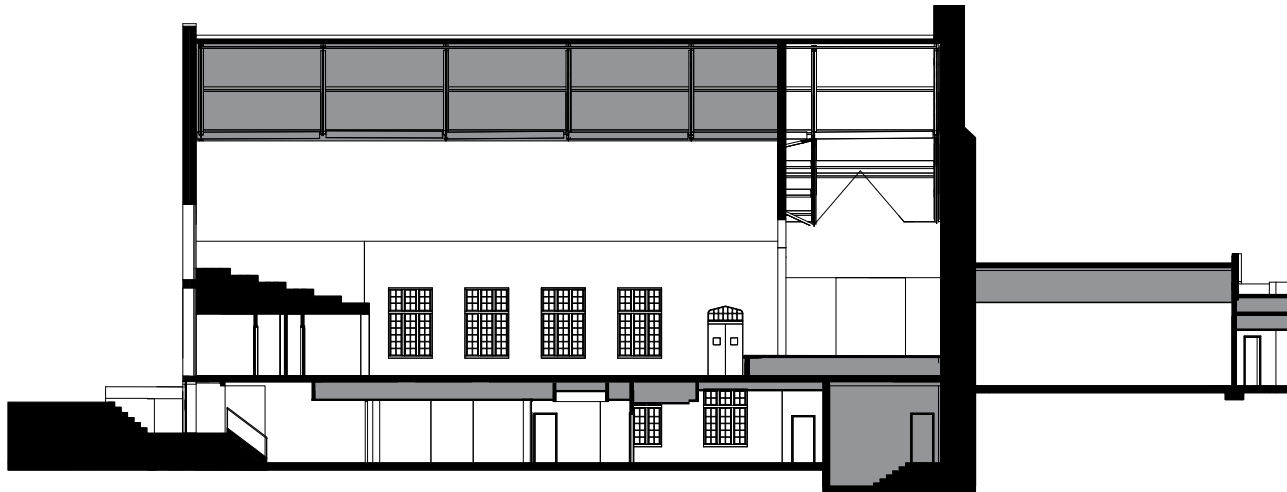
- | | | | |
|-----------------------------------|-------------------------------|--------------------------------------|----------------|
| 1 Art Classroom | 5 Lobby / Pre-Function | 9 Control Room | ■ Mechanical |
| 2 New Entry Lobby & Office | 6 Side Entry | 10 Mid-House Entry From Lobby | ■ Not in scope |
| 3 Student Gallery | 7 Stage | 11 Auditorium | |
| 4 Entry Pavilion | 8 Scene Shop | 12 Wire-Tension Grid | |



A Creative Complex

The design introduces raked seating into the space with an innovative mid-house entry. The control room addition bumps into the lobby to provide additional required seating and allow for projection onto the glass exterior to promote events.

SECTIONS BEFORE RENOVATIONS

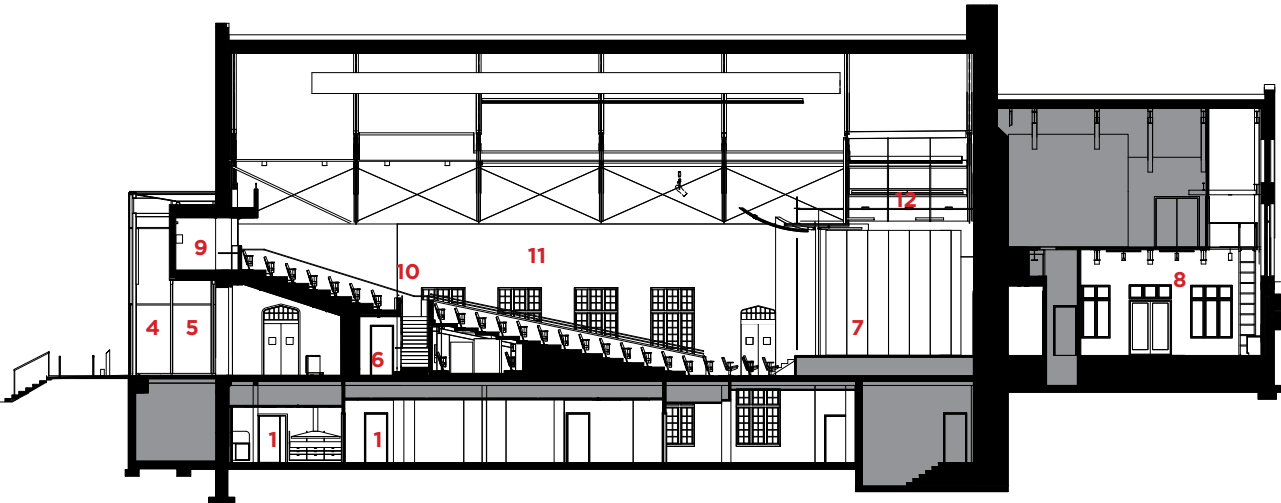


Longitudinal Section Before

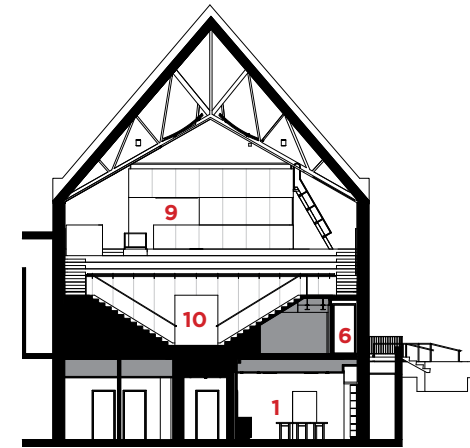


Cross Section Before



SECTIONS AFTER RENOVATIONS

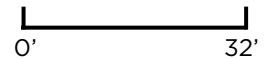


Longitudinal Section



Cross Section

- | | | | |
|-----------------------------------|-------------------------------|--------------------------------------|--|
| 1 Art Classroom | 5 Lobby / Pre-Function | 9 Control Room |  Mechanical |
| 2 New Entry Lobby & Office | 6 Side Entry | 10 Mid-House Entry From Lobby |  Not in scope |
| 3 Student Gallery | 7 Stage | 11 Auditorium | |
| 4 Entry Pavilion | 8 Scene Shop | 12 Wire-Tension Grid | |





Campus Plan



Creating an Arts Center in the Heart of Campus

A contemporary glass entry pavilion provides a distinct new entry and engages the plaza for a unifying point of arrival.



Before

Responding and Respecting History

Utilizing standard construction, the modern glass entry pavilion provides an obvious contrast to the Butler Stone building with vertical proportions that respond to the Gothic context.



A Welcoming Addition

Upon entry, the expanded lobby introduces a simple material palette that transitions from the contemporary entry to the older building and orients visitors to enter the auditorium in the middle of the house seating.



Uplifting Transformation

The volume of the transformed auditorium is expanded with the removal of the ceiling. Exposed structure, simple acoustic panels, and new discrete lighting provide a contemporary and high-tech aesthetic.



Student-Focused Art Production

Arts is central to the pedagogy of the School and the new space gives young performers a supportive environment that enhances and projects sound. Multiple opportunities for student-led management of technology are integrated throughout the design.



Design for Diverse Performance Needs

The design integrates multiple configurations that optimize acoustics for various performance needs, from dance recitals, spoken word, musicals, choral, amplified instrumental, and orchestral.



A Beacon that Communicates Progress

The design reorients the entrance to define the heart of campus while the contemporary structure communicates the dramatic transformation within.