

THE CENTER FOR PARKS & PEOPLE AT AUCHENTOROLY TERRACE

Institutional Architecture

2100 LIBERTY HEIGHTS AVENUE
BALTIMORE, MARYLAND 21217

The Parks & People Foundation, **Baltimore's leading non-profit organization for providing creative solutions to recreational, environmental, and park issues**, charged the design team with fashioning a new campus from a series of abandoned historic buildings on a large, overgrown site within Baltimore's premier Druid Hill Park. The process **engaged multiple public and private entities** in a 10-year planning, design, and construction effort and overcame challenges arising from a diversity of private and public funding sources. All aspects of the project required **State and Federal historic approvals**.

The project includes the restoration of the park landscape, the restoration of the park's original **Superintendent's House** constructed in 1872, and the design of **a new sustainable headquarters** for the Foundation.

CREATING A CAMPUS FOR THE COMMUNITY

A majority of the campus is dedicated to public use including a teaching lab, reading room, community event space, seminar room, demonstration gardens, and new bike and walking paths.

The project incorporates **advanced sustainable design practices throughout the site and buildings**, and was awarded **LEED Platinum certification**. The campus design creates a didactic environment at every level that encourages the community to learn, grow and explore their natural environment.

SUPERINTENDENT'S HOUSE

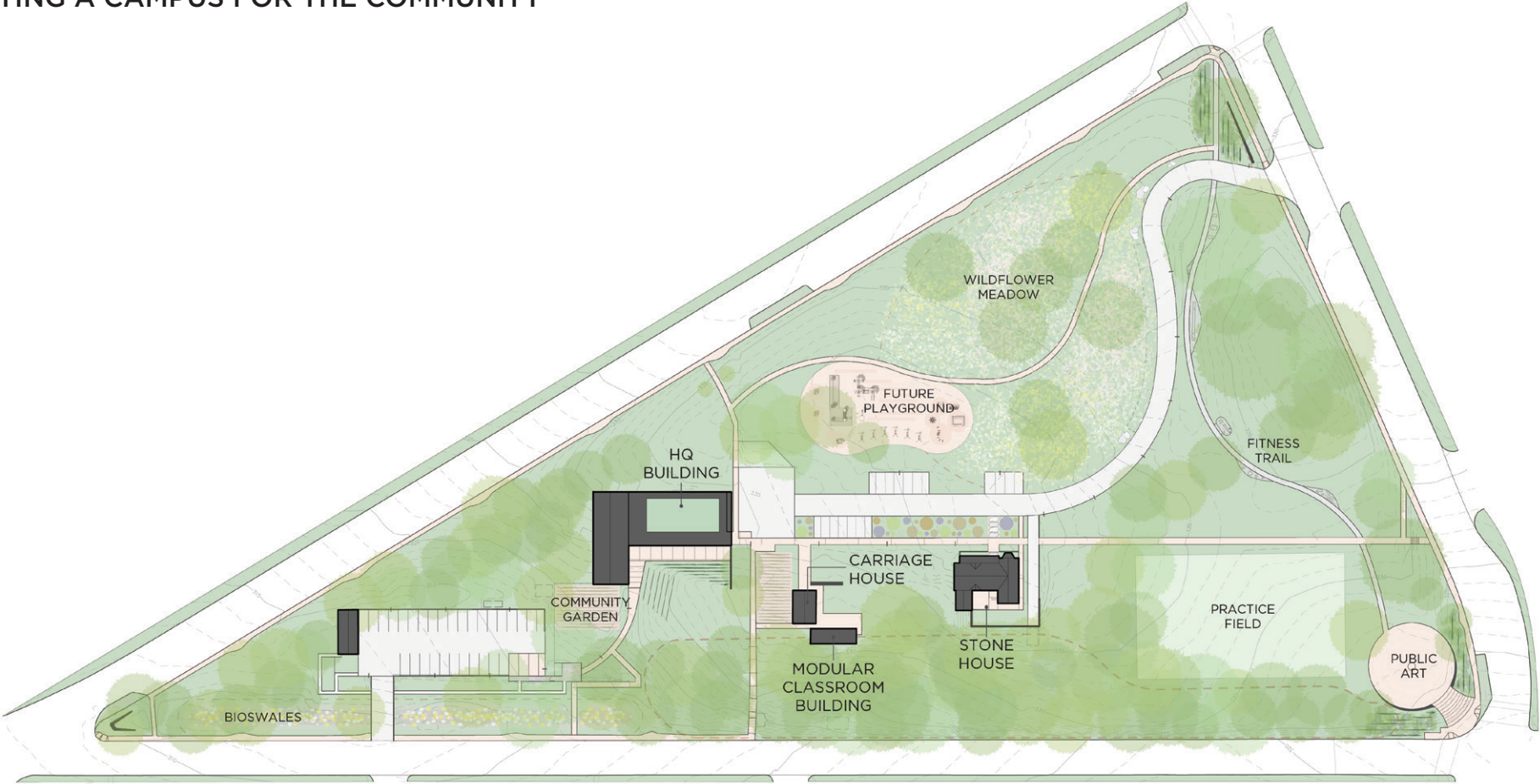
The Superintendent's House is **a model for using historic restoration and sustainable design to breathe new life into existing structures**. When Parks & People acquired the property in 2005, both the building and the land had been left to deteriorate for decades. The

historic structure was **twice the victim of arson** which destroyed the roof and much of the interior of the house. **The restored House faithfully retains its original exterior detail and trim**, evoking the long history of the Druid Hill Park, while offering a flexible, open floor plan inside for use as a meeting space by both Parks & People and the community.

SALLY AND BUTCH MICHEL CENTER

The new headquarters, named the Sally and Butch Michel Center, provides **a respectful contemporary counterpoint to the campus' historic structures**. The large, open office space is nestled into the landscape to diminish the overall impact of the building on the site, while a green roof and terrace create **strong connections between interior and exterior spaces**. Conventional materials including wood siding and metal panel complement the use of stone and slate in the historic structures while **evoking images of humble agrarian outbuildings**.

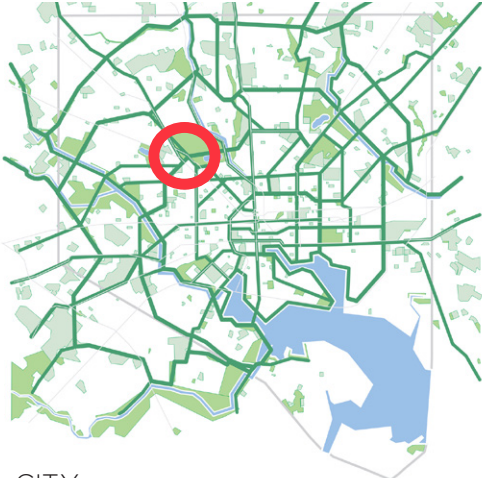
CREATING A CAMPUS FOR THE COMMUNITY



SITE



The project is appropriately sited on a node of Parks & People Foundation’s One Park vision. One Park builds on Baltimore’s rich heritage of parks by reconceiving the city as an integrated network of parks, community gardens, landscaped boulevards and paths, squares, schoolyards, college campuses, recreation areas, bike paths, and other public open spaces.



CITY



NEIGHBORHOOD

CREATING A CAMPUS FOR THE COMMUNITY



The Auchentoroly Terrace site is a **9-acre parcel listed on the National Register of Historic Places**. It supports the organization's Greening initiative to reclaim and revitalize vacant lots and create usable space that benefits the entire community. In addition to restoring the landscape, the project created a network of walking paths and gardens for public use.

SUPERINDEPENDENT'S HOUSE

Before



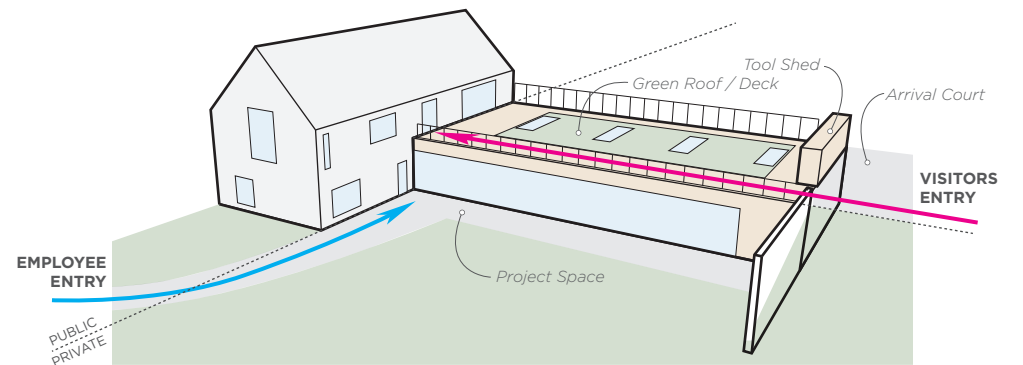
Before



SALLY AND BUTCH MICHEL CENTER



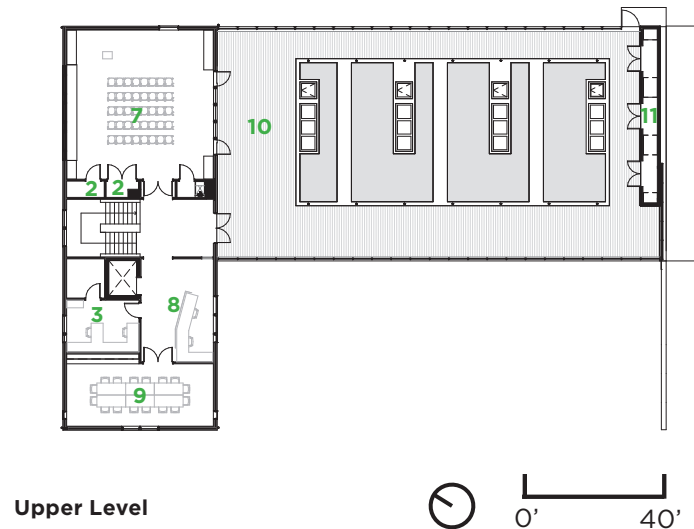
SALLY AND BUTCH MICHEL CENTER



SALLY AND BUTCH MICHEL CENTER



SALLY AND BUTCH MICHEL CENTER



- 1 SEMINAR ROOM
- 2 BUILDING SUPPORT
- 3 OFFICE
- 4 OPEN OFFICE
- 5 PROJECT WORKSPACE
- 6 LOCKER ROOM
- 7 TEACHING LAB
- 8 RECEPTION
- 9 READING ROOM
- 10 OUTDOOR CLASSROOM
- 11 TOOL SHED



SALLY AND BUTCH MICHEL CENTER



SALLY AND BUTCH MICHEL CENTER

