

Race Pace – 1 Railroad Avenue

Westminster, MD

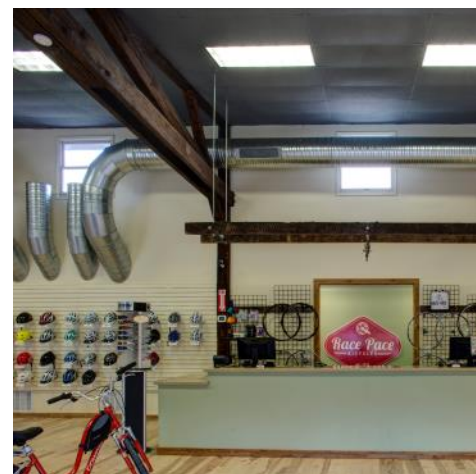
Commercial/industrial

Contributing to the growth of the historic downtown of Westminster, MD, this project is an adaptive reuse of a former railroad depot and freight warehouse. The heavy timber structure originally built in 1920, evolved to house a fireplace store, then sat empty until the conversion to a modern retail center for the Race Pace performance bicycle store.

Race Pace first opened in Westminster, MD in 1990, operating from several different locations around the city, until finally selecting and moving to this new location. Having worked on each Race Pace store since 1984 the design team provided guidance to the owners on selecting a new site that would work for their full service retail and service center. Motivated to invest in the revitalization of Westminster's downtown, Race Pace purchased and renovated the historic railroad depot at 1 Railroad Avenue, one block from main street. The new store contributes to the vitality of the downtown and also provides a hub for cycling enthusiasts to take advantage of the more than 150 miles of cycling trails and paths throughout the county.

In order to modernize the facility for a bicycle retail store, service and rental center, the design included several upgrades for ADA compliance as well as energy efficient utilities and durable finishes that complement and accent the historic structure.

The renovation created a thriving retail and service center in the midst of a growing, vibrant downtown area. The new facility is easily accessible by car or bike and the owner has expanded services to include not only retail, but also bike rentals and a full service center for repairs and maintenance.





The Historical Society of Carroll County reviewed and approved the adaptive reuse design





Installed Stanley Automatic Sliding doors at main entrance and service entrance to make it easier for customers to move bikes in and out of the store



Upgrades included an accessible ramp and entrance, accessible bathrooms, insulated storefront glazing, improved thermal envelope with new vertical metal siding, energy efficient lighting and HVAC equipment. A shower was added to allow employees to shower since most ride their bikes to and from work. To keep the original look that accessible ramp and handrails were hidden by a low wall with a milled white oak plank cladding.

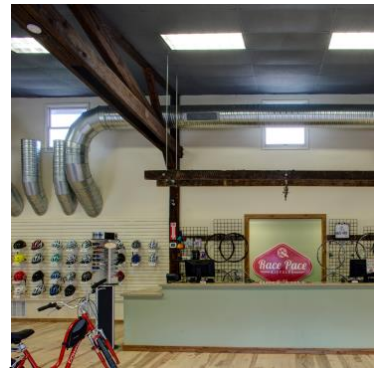


Finishes included recycled rubber flooring, hickory flooring for durability, exposed heavy timber structure and poured in place concrete all sales and service countertops area made from 100% post-industrial recycled / recovered content.

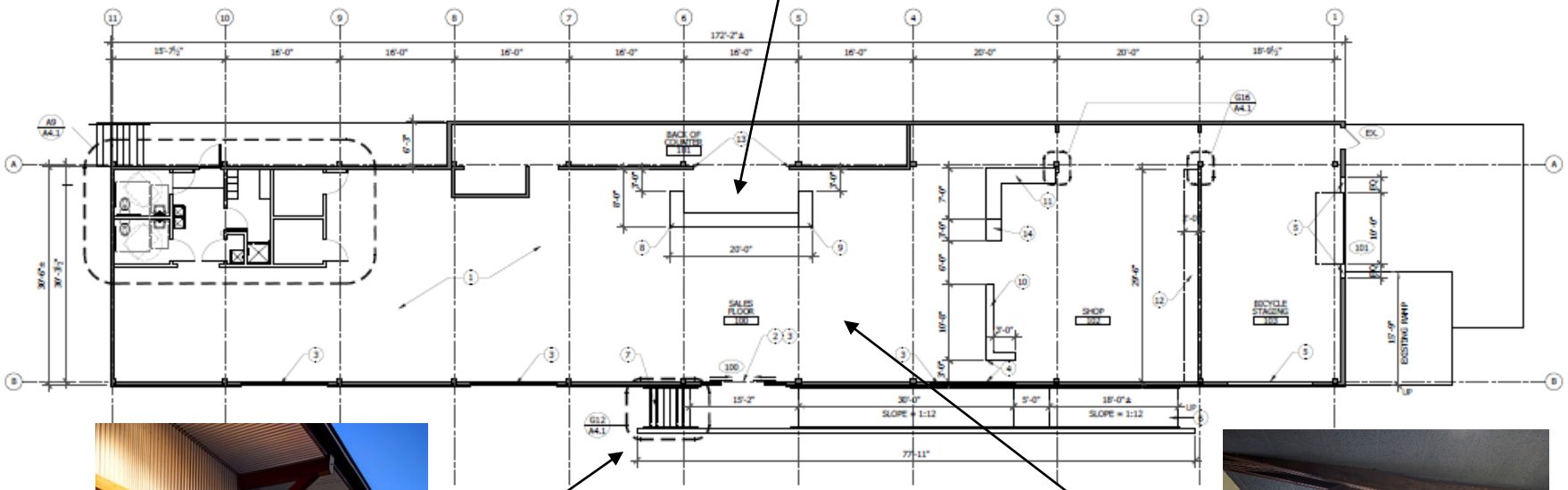








Sales counter



New entrance



Bike sales