

Race Pace – Penn Station  
Baltimore, MD  
Unbuilt - Commissioned



Baltimore's Penn Station, a historic railroad station dating to 1911, is poised to become a hub of the city and a link for transportation. As part of the Penn Station redevelopment, the city is looking at creating a Penn Station Bike Hub for commuters, residents, tourists, and travelers who use bicycles as transportation upon arrival to the city. Working with our retail client, we envisioned a new bike hub that would be located directly adjacent to Baltimore's Penn Station. The bike hub would be a four story automated self-service bicycle storage facility and a two story retail building with entrances for bike rentals and repairs as well as a separate retail store entrance.



Located next to Baltimore's Penn Station in the growing, thriving Station North Arts District creates a central point for cyclists to travel throughout the City. Penn Station is approximately 1.5 miles from downtown. Departing the station, cyclists are lead downhill to distinctive areas such as the Mount Vernon neighborhood, populated with celebrated cultural institutions including the Walters Art Museum and the Peabody Conservatory of Music; the central business district marked by skyscrapers; and the popular Inner Harbor, home to the National Aquarium, historic sailing ships, and shops, restaurants and hotels. Adding a bicycle hub to the Penn Station footprint would contribute to the station's intermodal transit offerings, which currently include MARC and AMTRAK train services for passengers.

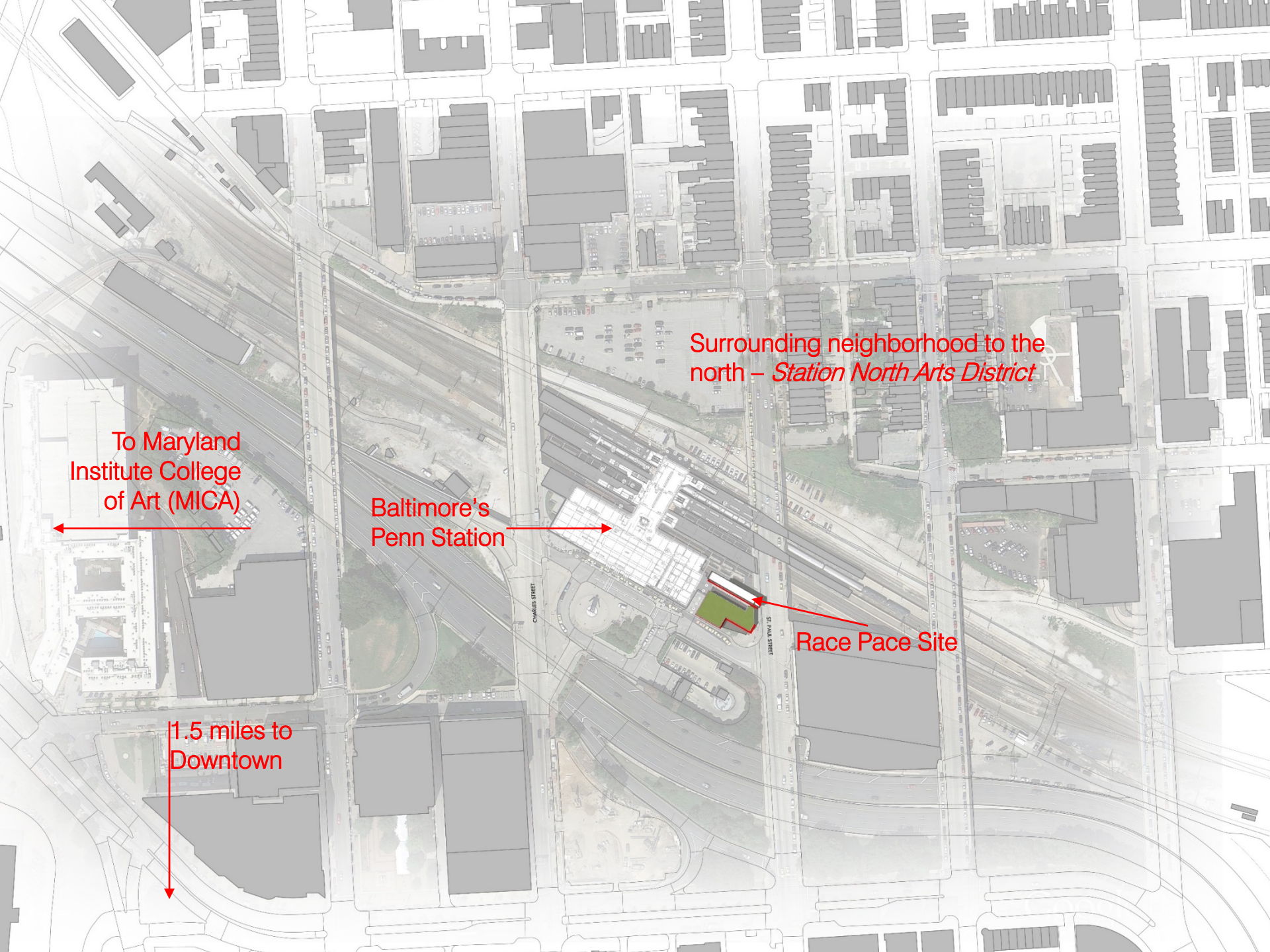


Race Pace  
BICYCLES  
1975

BIKE SALES BIKE REPAIRS BIKE STORAGE

RACE PACE BIKE STORAGE BIKE REPAIR

BIKE STORAGE BIKE REPAIRS BIKE SALES



To Maryland  
Institute College  
of Art (MICA)

Baltimore's  
Penn Station

Surrounding neighborhood to the  
north – Station North Arts District

Race Pace Site

1.5 miles to  
Downtown



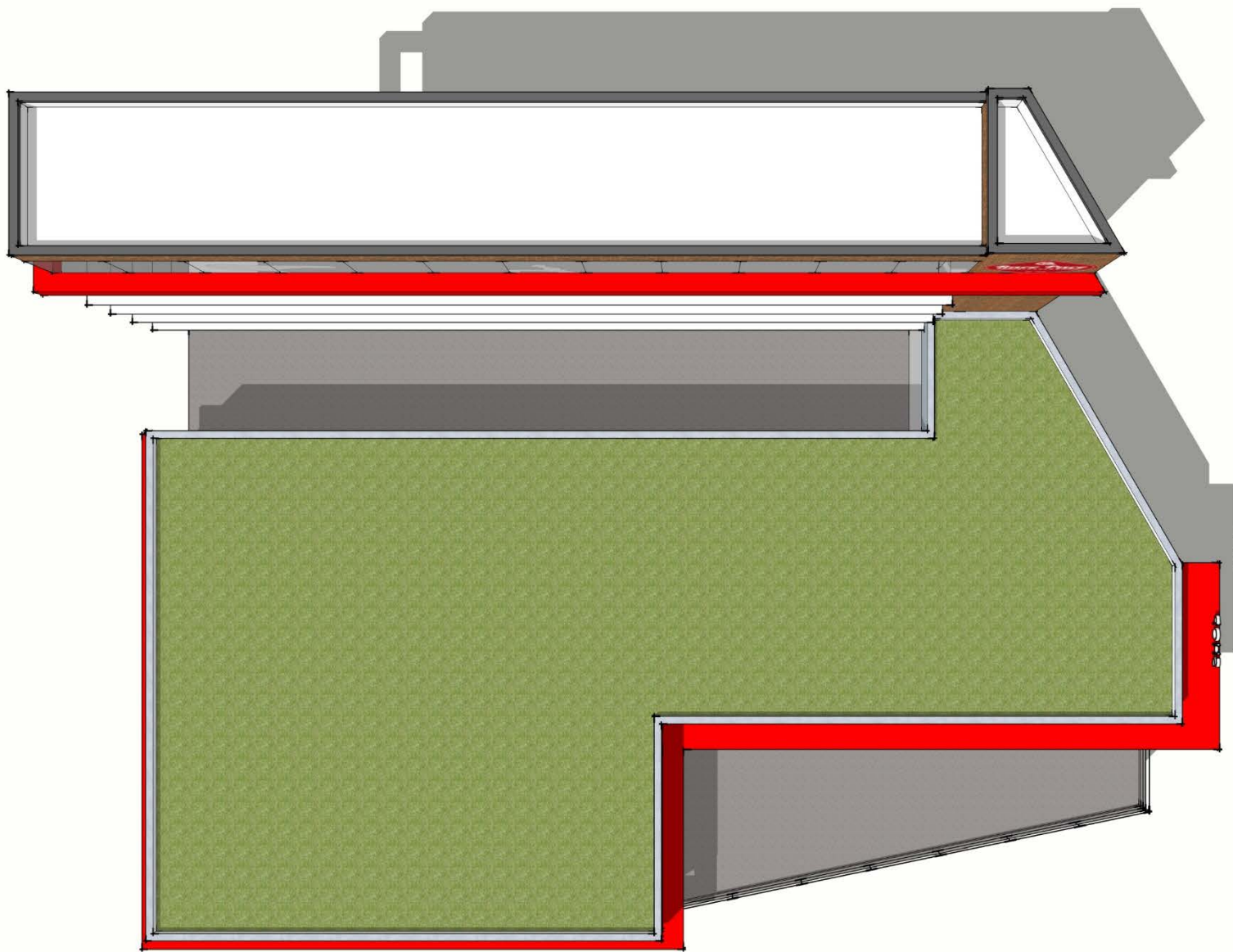
*Drop Off Lane Concept*

On the lower level of the two story building would be 5,000 SF of commuter bike rentals and bike repairs. Patrons enter the lower level on the same level as Penn Station's entrance. The upper level would be a 5,500 SF retail bike store with a front entrance on the southeast corner. Plans include incorporating the existing elevator to connect both levels of the bike shop and all upper levels of Penn Station.



*St. Paul Street Perspective*

The storage facility automation is based off of the [GIKEN Eco Cycle](#) system widely used in Asian cities. This system easily allows bicycle commuters to deposit and retrieve their bicycle to and from the storage facility in less than a two minutes. The staggered design allows bicycles to overlap and more densely store the bicycles. The glass structure would allow tourist watch the bicycles moving up, down and across the faced while the bicycle are placed and picked from their nested position.



Site Plan showing planned green roof to function as a public park/plaza.



*Aerial Perspective*

Separate from bicycle rentals and sales, the facility would house commuter bike storage in the 40-foot tall glass structure to the north. The fully automated self-service commuter bike storage would be configured to allow 24-hour access by the customer. The bike storage facility