



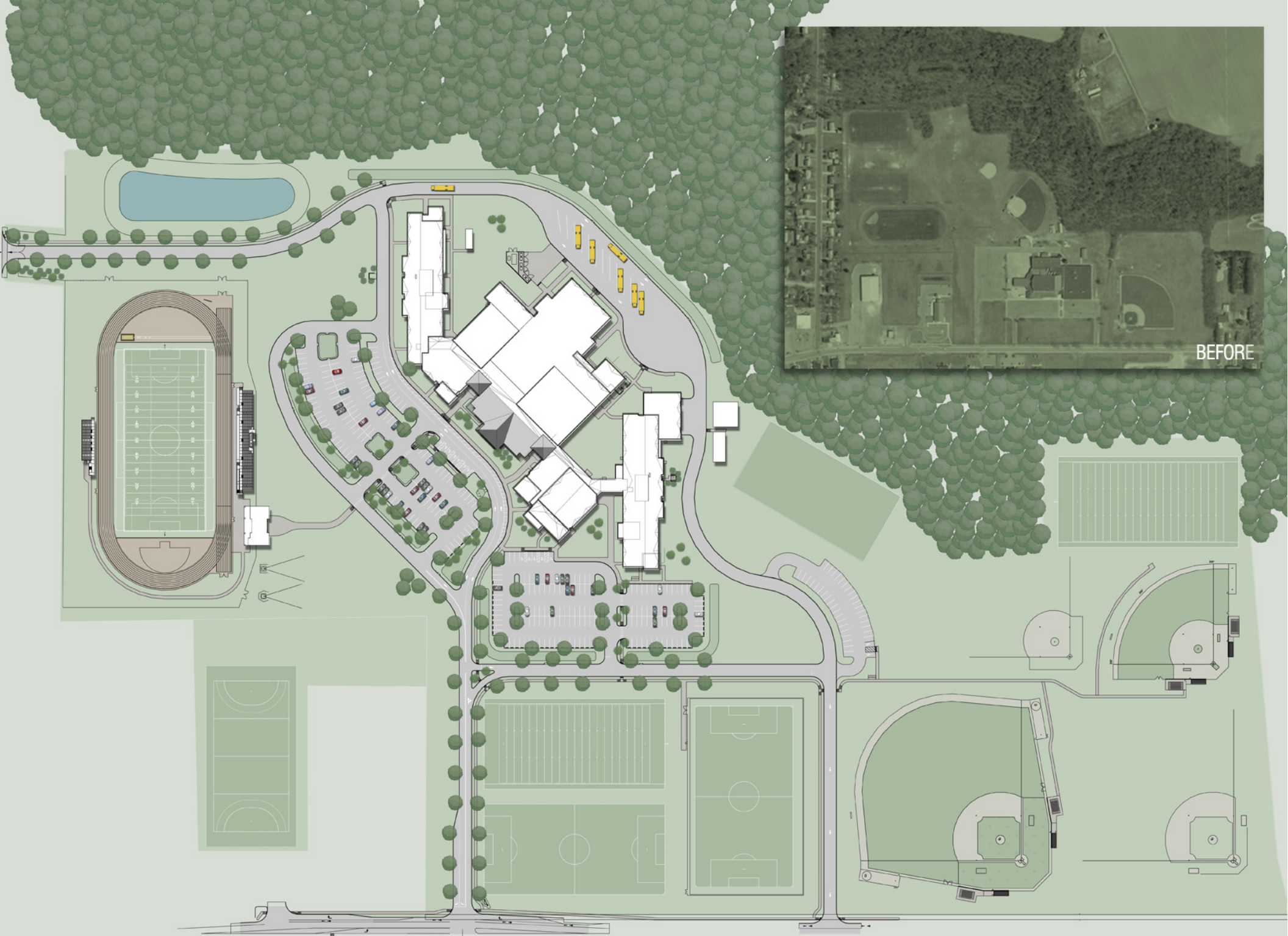
LAUREL MIDDLE AND HIGH SCHOOL
LAUREL, DELAWARE

CATEGORY:
NON-RESIDENTIAL ARCHITECTURE / NEW CONSTRUCTION

PROJECT SYNOPSIS:

The 1,400 student, 197,117 square foot facility was the first new school to be built in the Laurel School District in over 40 years. As such, it was a major undertaking and a focus of community attention. A critical element of the design was developing a combined High School and Middle School which had distinct elements to differentiate their educational programs while making use of shared spaces to maximize the facilities budget. The main entries are separated by the centrally located Administration areas bookended by distinct entry points for each school providing inviting, yet secure points of entry. The school features a 600 seat auditorium, a 1,000 seat main gymnasium, and a 200 seat Middle School gym. The facility is a focal point of community life in this small rural community and as such it was critical that it reflect community values. The use of brick allowed the building to reflect local historical values while still being demonstrative of a contemporary educational facility.





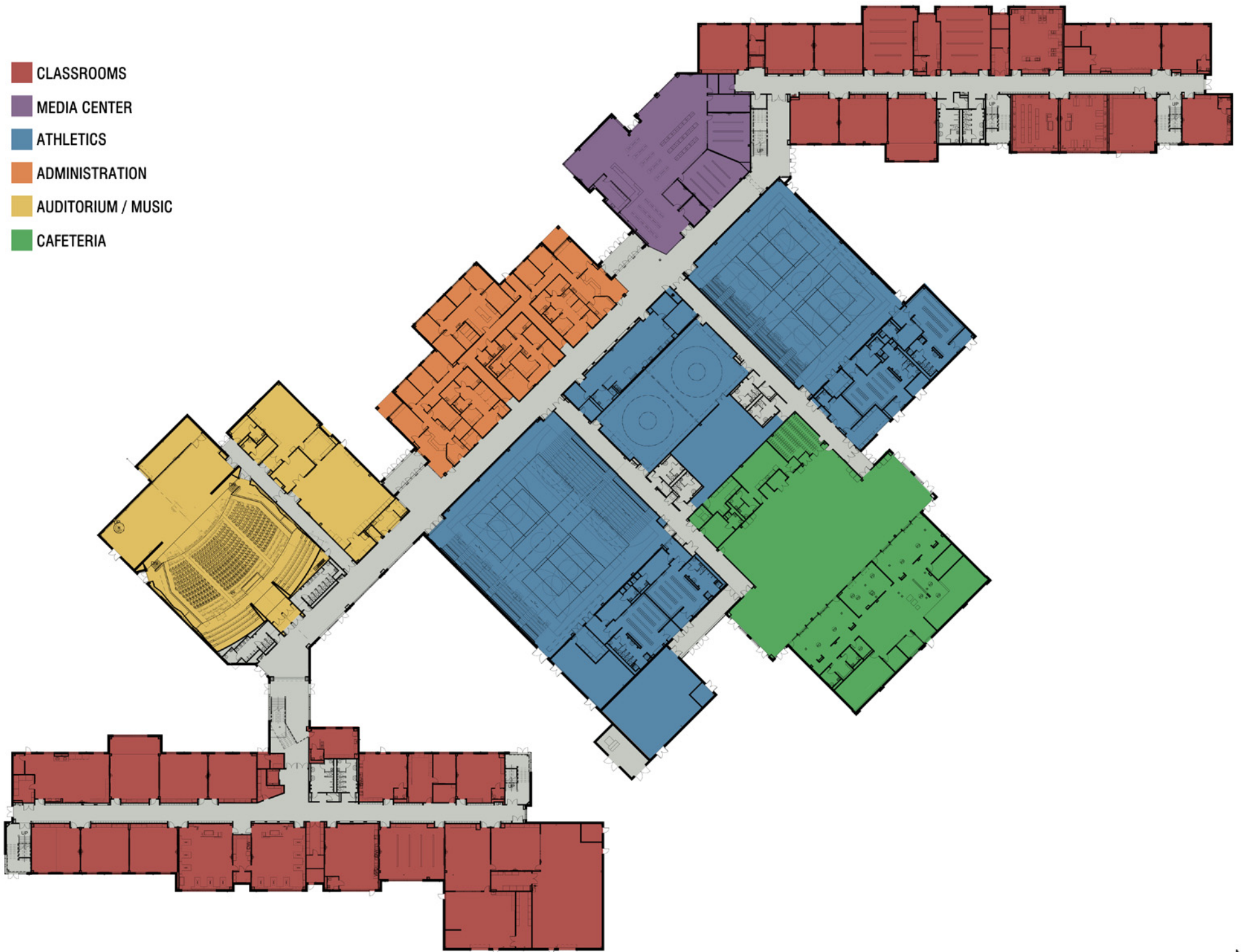
BEFORE

SEE #10. OAK LANE ON

SITE PLAN



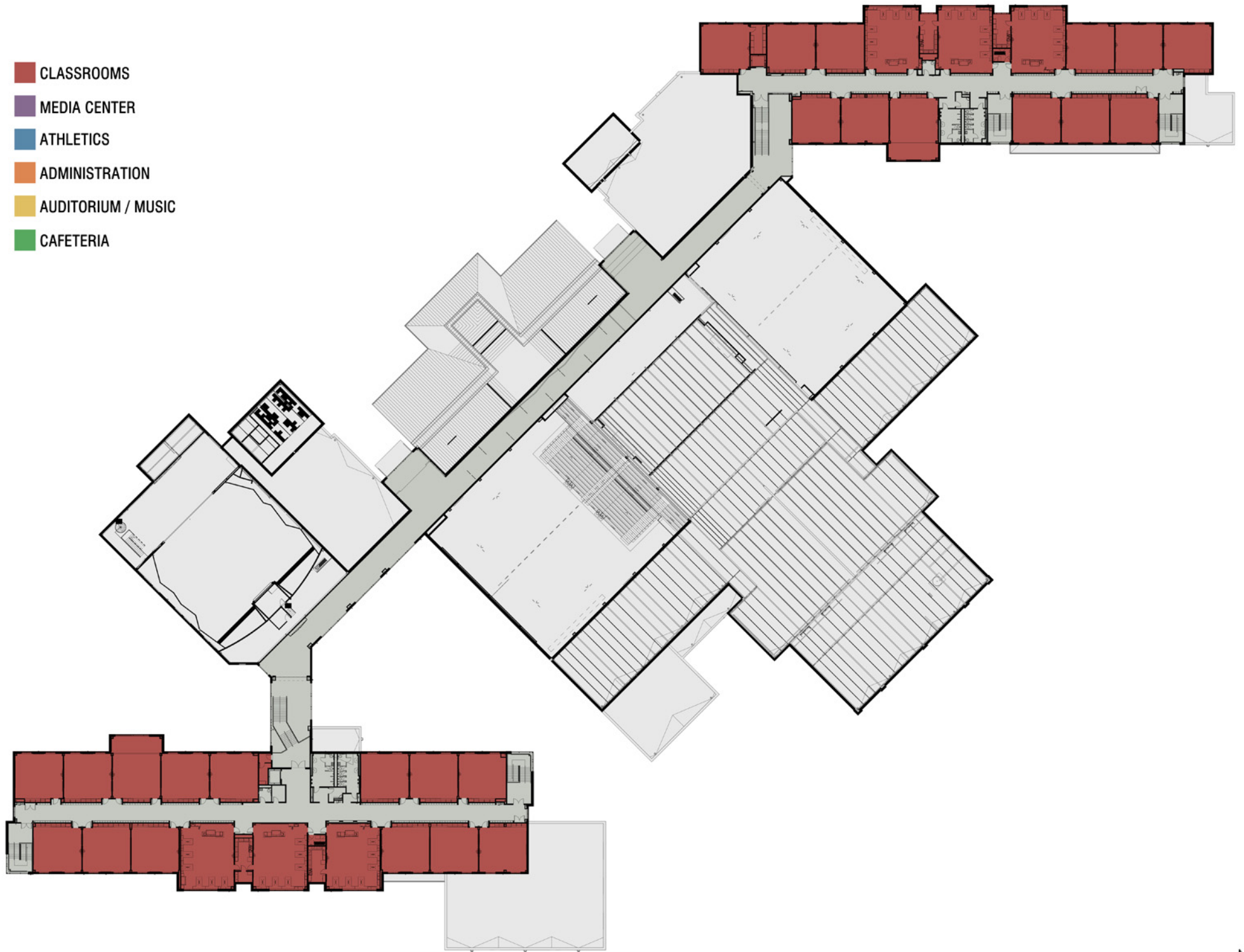
- CLASSROOMS
- MEDIA CENTER
- ATHLETICS
- ADMINISTRATION
- AUDITORIUM / MUSIC
- CAFETERIA



FIRST FLOOR PLAN



- CLASSROOMS
- MEDIA CENTER
- ATHLETICS
- ADMINISTRATION
- AUDITORIUM / MUSIC
- CAFETERIA



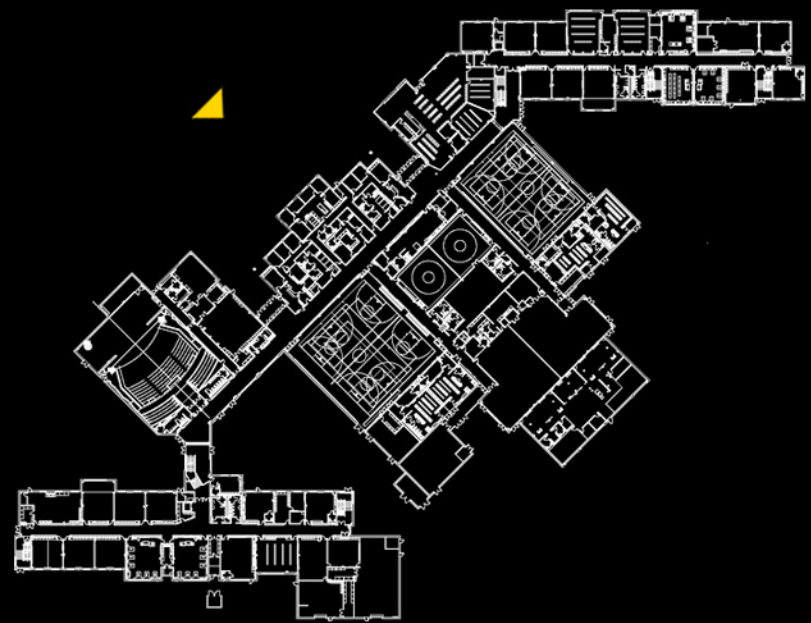
SECOND FLOOR PLAN



ELEVATION



RENDERING AERIAL





GYMNASIUM



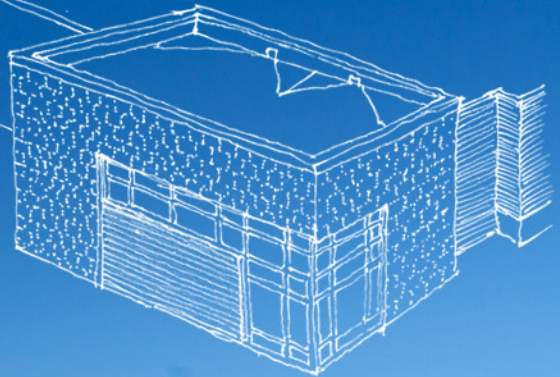
CLASSROOM



BRCIK DETAIL

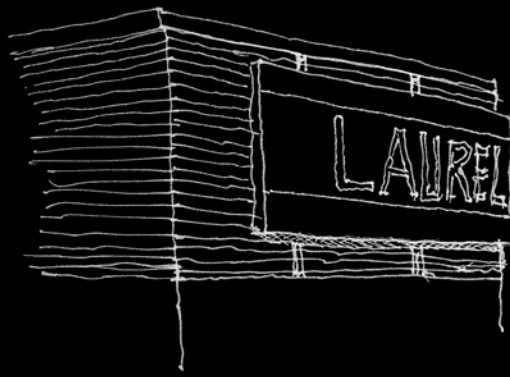
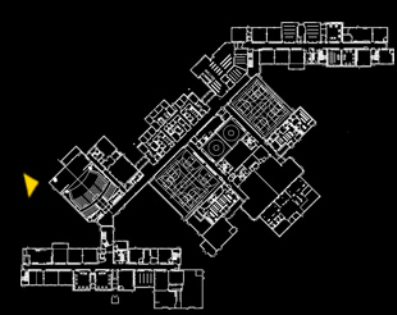


BRICK DETAIL





AUDITORIUM



LOCAL GRAIN SILO



EXTERIOR VIEW