

WILLIAM F. COOKE, JR ELEMENTARY SCHOOL

WILMINGTON, DELAWARE

CATEGORY:

NON-RESIDENTIAL ARCHITECTURE / NEW CONSTRUCTION

PROJECT SYNOPSIS:

The design intent for the new William F. Cooke Jr. Elementary School was to create a welcoming and vibrant community school that would inspire students and community alike and create opportunities to learn both inside and outside the classroom. Located on a sloping site alongside a number of residential developments, the building nestles into the contours of the site using multiple levels which distinguish grade clusters and fit the school to the scale of the adjacent community. The Main entry's cross-axial circulation provides for bus and vehicular separation while creating a central entry point highlighted with the "Bus Tank" aquarium and a Lego wall with the centrally located Administration, Media Center, and Community Room functions directly adjacent. The main stairwell is designed to be open and vibrant and act as a beacon of activity and light. The K-1 wing is separated from the two story academic wing housing grades 2-3 on the lower level and grades 4-5 on the second floor. Each wing has centrally located break out learning spaces and teacher support areas. Bright colors accents on the exterior and interior serve as both a wayfinding device and enliven the student experience. The design was the result of a deeply collaborative effort between architects, administration, teachers, and students, with student artwork incorporated into multiple design elements. The school was developed to be highly energy efficient through its site orientation combined with LED lighting throughout and a VRF mechanical system. A combination of environmentally friendly and sturdy materials such as brick, stone, and metal panels make up the material palette.



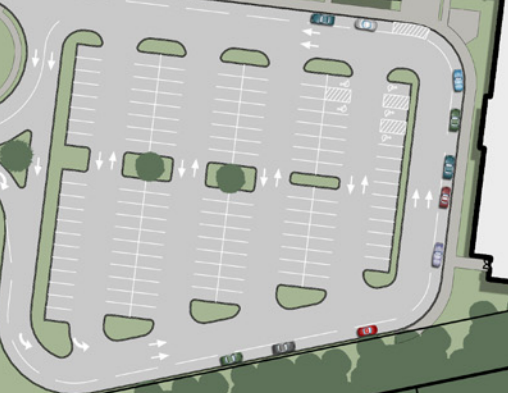
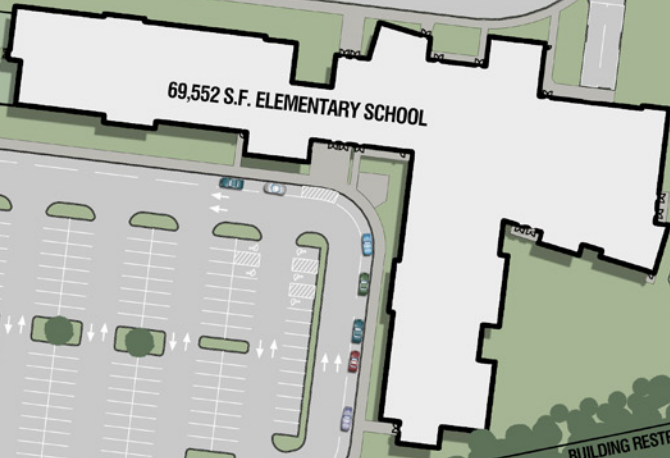
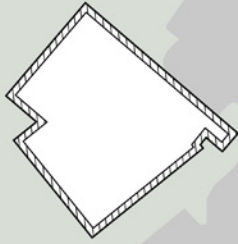
FRONT ENTRANCE APPROACH



William F. Cooke, Jr. Elementary

NEWPORT GAP PIKE (STATE ROUTE 41)

GRAVES ROAD



BUILDING RESTRICTION LINE



SWM FACILITY



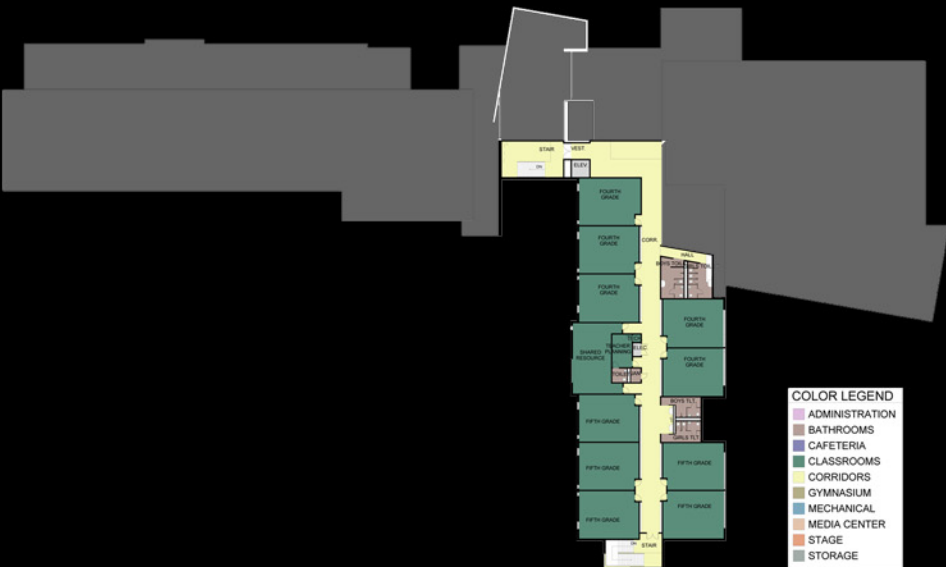
PROPOSED PLAYING FIELD



FIRST FLOOR PLAN

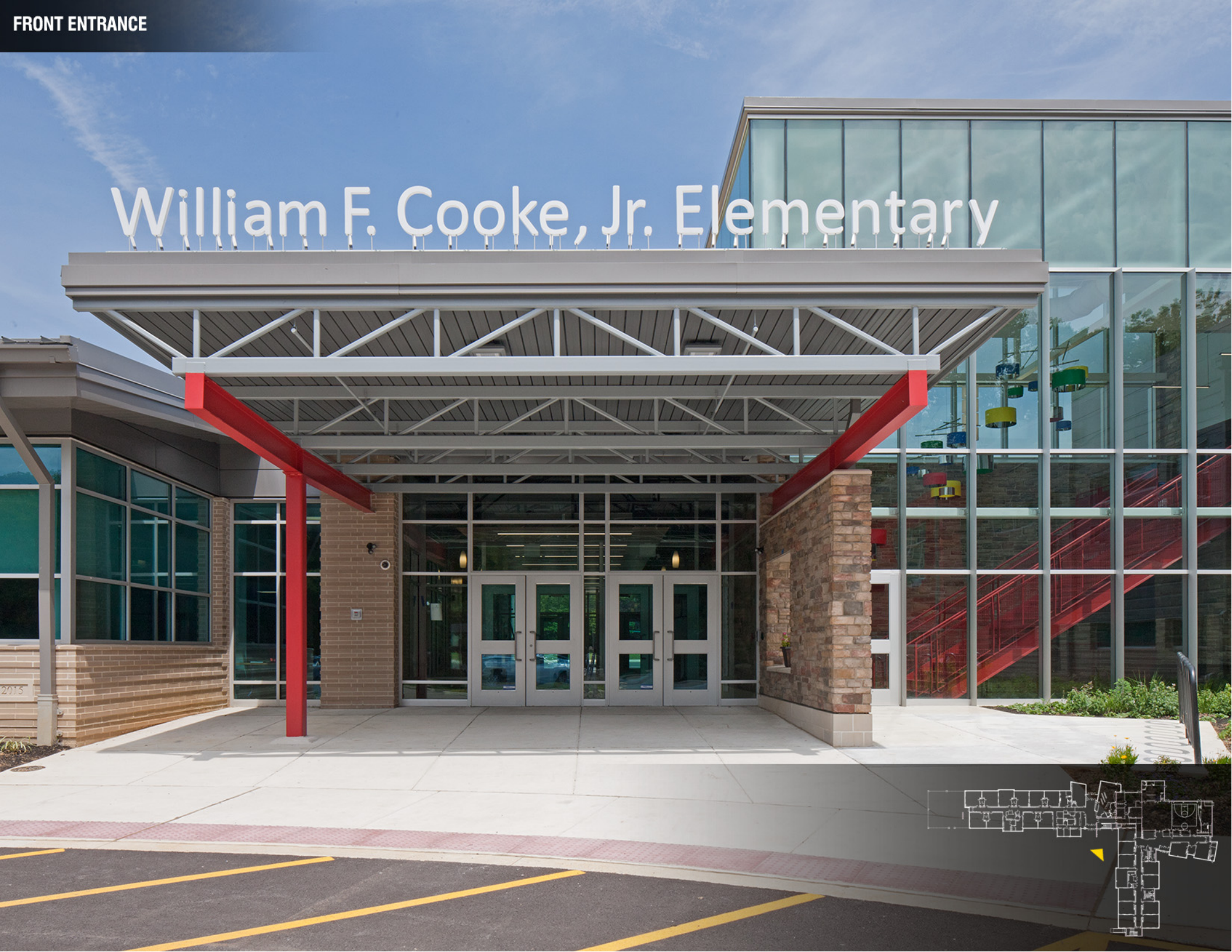


SECOND FLOOR PLAN

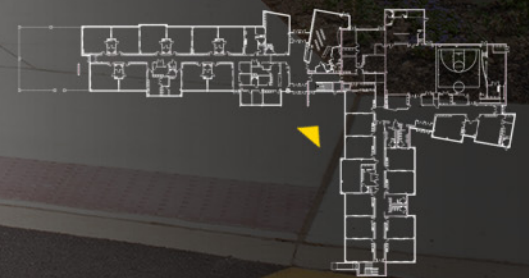


MAIN STAIRWELL

William F. Cooke, Jr. Elementary



2015





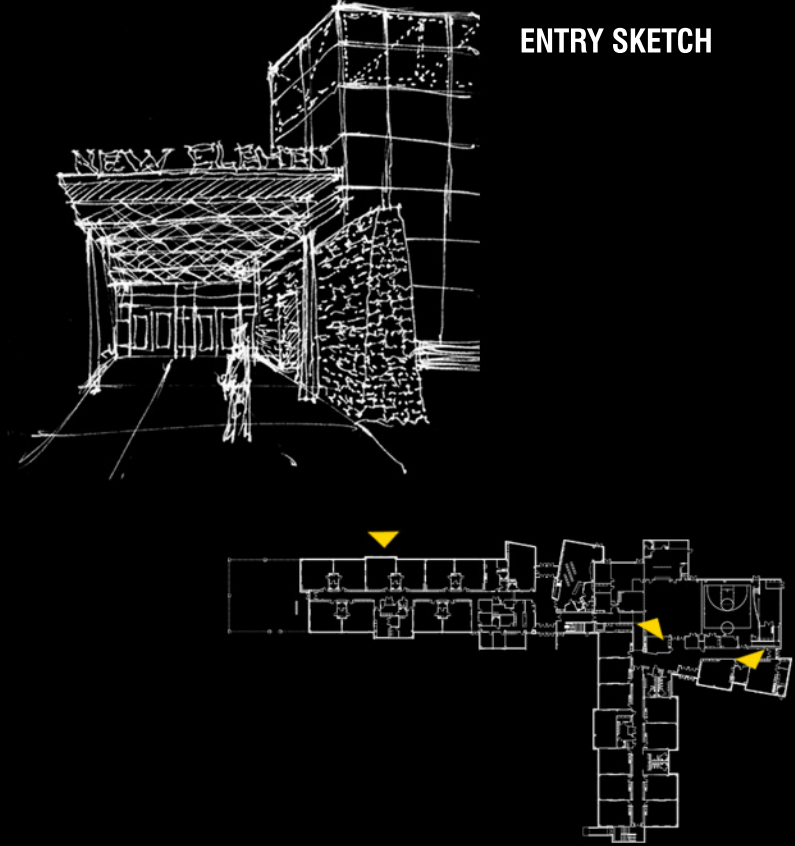
MAIN LOBBY



MEDIA CENTER



ENTRY SKETCH



K - 1 WING DETAIL



ART ROOM

WEST ELEVATION



EAST ELEVATION



MEDIA CENTER / BUS ENTRY



ACADEMIC WING



ART / MUSIC ROOMS

STAIRWELL

William F. Cooke, Jr. Elementary

