

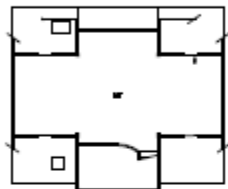


Located on the shores of the Chesapeake Bay near one of Maryland's earliest settlements, this 3500 SF house minimized its footprint for environmental reasons, becoming a tower with Classical and Maritime references. The Classical white tower, with a temple form and board-and-batten siding used to emphasize the verticality, contrasts oversized traditional windows, rationally stacked, with a first floor Modern floor-to-ceiling curtain window wall set in a serpentine pattern bi-passing a structural Ionic column, opening the main living space onto a wrap-around deck. On the back, or north side, a four-story stair tower differentiates itself with natural cedar shingles, a flared base, and wrap-around windows at the top mimicking a light house beacon. On the interior, the structural stairs span across the vertical ribbon window accented with salvaged stained glass church windows. The continuous interior guardrail abstracts the adjacent wetland reeds in welded metalwork. The home was designed for an artist and philosophy professor, so artwork and floor-to-ceiling bookcases further sculpt and define the spaces.

Environmentally sensitive components include Boral siding, geo-thermal HVAC system, a pre-fabricated garage, a cantilevered deck, a recycled metal roof and several salvaged components including carved Greek corbels, a Singer sewing machine base y and an ionic column capital as a back stoop.



WHITEHALL BAY



4TH FLOOR PLAN



3RD FLOOR PLAN



1ST FLOOR PLAN



2ND FLOOR PLAN

WETLANDS







Living Room with serpentine floor-to ceiling windows opening onto wrap around deck, bookcase painting niche and archway to stair tower.



Kitchen with bookcase painting niche



Stair tower with metal guardrails abstracting the wetland reeds and salvaged church windows.

Entry with bookcase painting niche and coat storage



Study overlooking wetlands with bookcase painting niche







Master Bath and Powder Room

