



EAST BRUNSWICK ISLAMIC CENTER | EBIC

PROJECT: Mosque and Multipurpose Building

LOCATION: East Brunswick, New Jersey

CATEGORY: Community College – Design Studio Project

SYNOPSIS: As part of design studio project, students were asked to design a place of worship among four major religions based on random selection. After selecting Islam and being given a program, list of building and code requirements and details regarding the wooded site near a lake in East Brunswick, New Jersey, I gathered information about mosques both contemporary and historical. With research and personal experience, I designed East Brunswick Islamic Center (EBIC), a mosque and multipurpose building, that would be appropriate for a diverse Muslim American community. I developed an integrated spatial design that would choreograph procession and circulation through the site and buildings in response to program and landscape. The building is arranged on the wooded site using the topography to create two levels of entry into the mosque and multipurpose buildings that are organized around a central courtyard. This courtyard serves to orient and organize the program. After looking at contemporary mosques around the world, I was most impressed with those that manipulated form and light to engage and develop processional paths through the surrounding landscape.

The Mosque's reflective and focused space addresses the individual's singular relationship with God, Allah, and the courtyard addresses the individual's collective relationship with community. East Brunswick Islamic Center, both mosque and multipurpose building, is designed to provide interfaith and multicultural activities to build awareness and bridge gaps about Islam and Islamic cultures. Architecture establishes dialogue with site, community, and environment and plays a key role in creating a global community.

LEARNING ABOUT ISLAM & HISTORICAL ARCHITECTURE

SKETCHING & PRECEDENT STUDIES

Diyanet Center of America
Traditional Turkish-Islamic Architecture
Lenham, Maryland

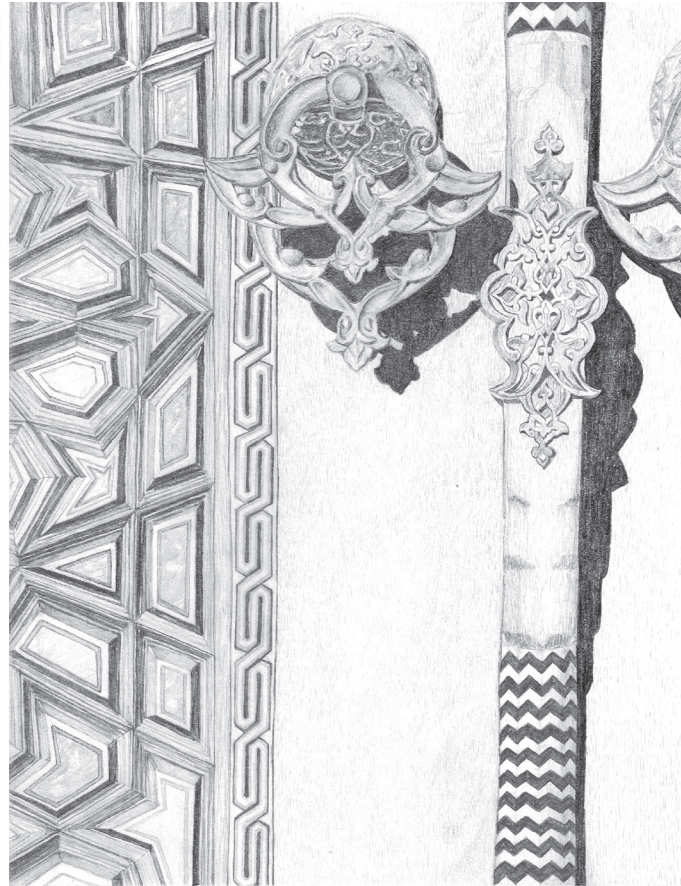
Pencil Sketch, *Sahn* (Central Courtyard)



“The mosque is the place of human agreement to prayer. In its making, it attests to the sense of agreement, and allows an individual the same freedom from reproach as if she/he were alone; yet it affords, through architecture, the generosity of the presence of many”

- Jaan Holt, *Architecture and the Wall Facing Mecca* (1982)

Pencil Sketch, Sanctuary Wood Door Detail



Watercolor Sketch: Mosque Entry
Tripoli, Libya

DESIGN CHALLENGES

- DESIGNING WITH TRADITION & MODERNITY responding to the Muslim community
- BUILDING APPROPRIATE ORIENTATION responding to Islam and existing environment
- CREATING APPROPRIATE SPACES responding to community needs for mosque and multipurpose structures
- IMPLEMENTING SUSTAINABILITY respond to the existing wooded site and local climate
- ESTABLISHING SENSE OF PLACE shaping space into a place, a place for community



East Brunswick Islamic Center

أمة = COMMUNITY
Ummah

Building Faith.
Peace + Tranquility
...a space for ALL to feel a sense of purpose, spirituality, faith.

Building Community.
Socialization + Engagement
...a place for family and friends.

MULTIPURPOSE CULTURE

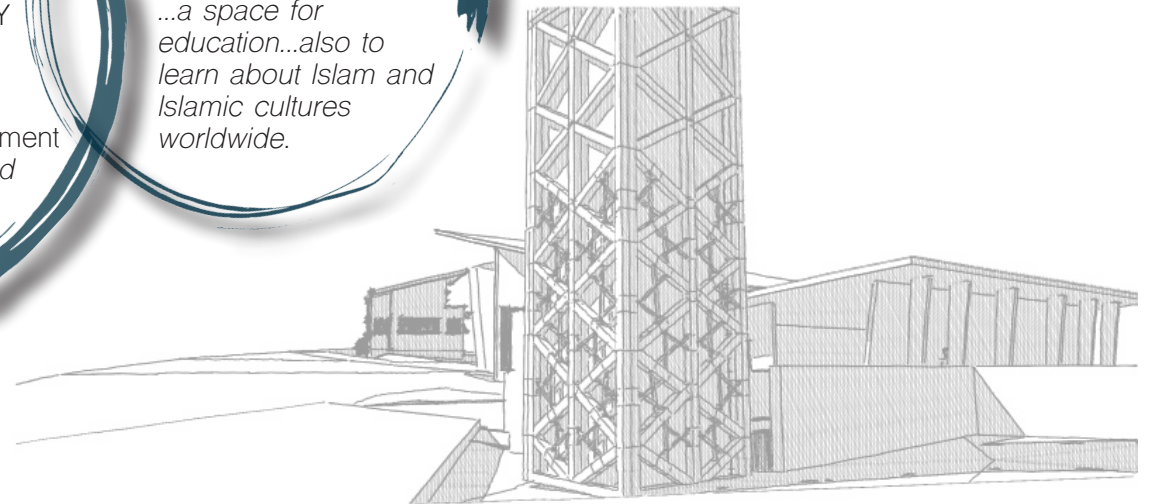
Building Culture.
Respect + Intellect
...a space for education...also to learn about Islam and Islamic cultures worldwide.

DESIGN GOALS

Shaping SPACE into a PLACE for COMMUNITY

ENGAGE AND CONNECT

COMMUNITY = SPIRITUALITY + CULTURE



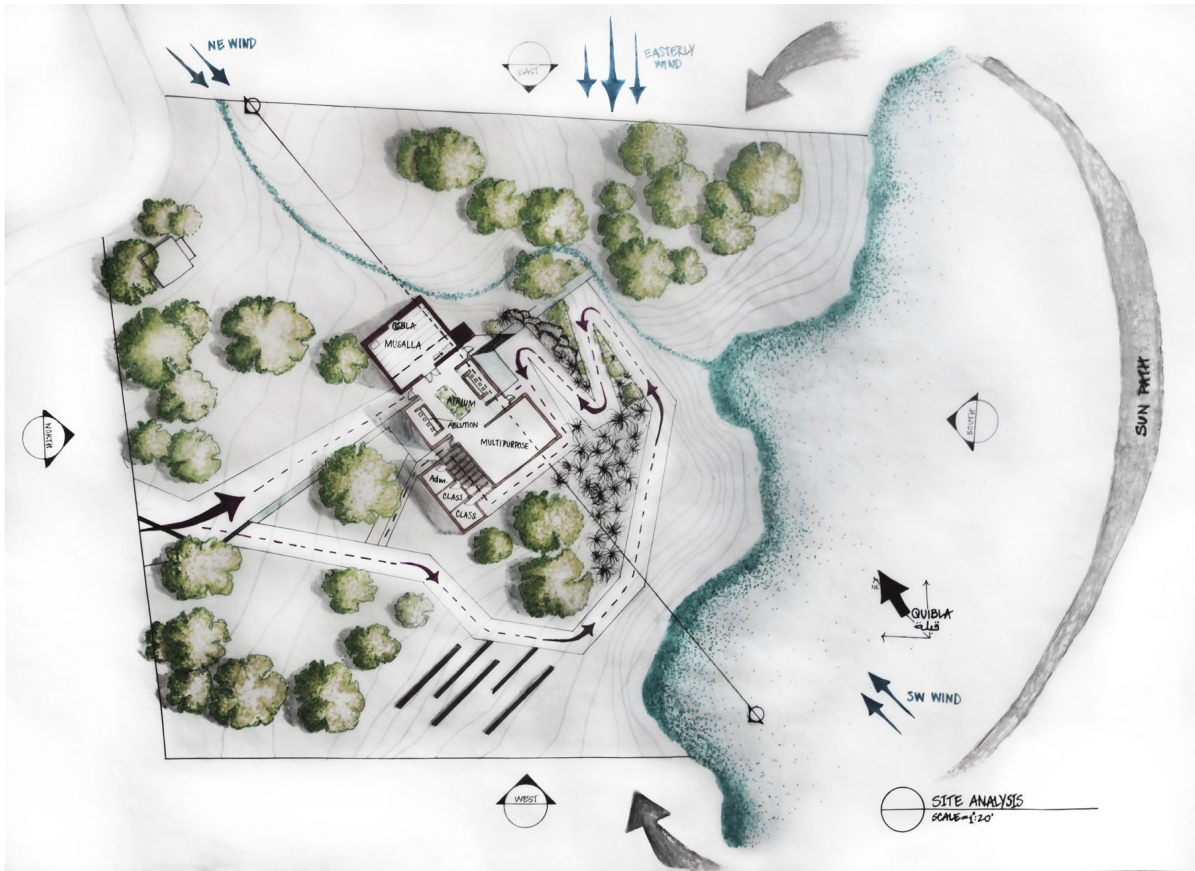
SOLUTIONS

SPATIAL DESIGN linking functional spaces that connect spirituality, culture, and community

- Circulation: shaped around site culminating on axis to mosque, central courtyard connecting mosque and multipurpose
- Mosque: simple & focused on filtering natural light to create a reflective experience for prayer
- Multipurpose: providing multifunctional education and community space needed to support the backbone of the community

DESIGN DEVELOPEMENT

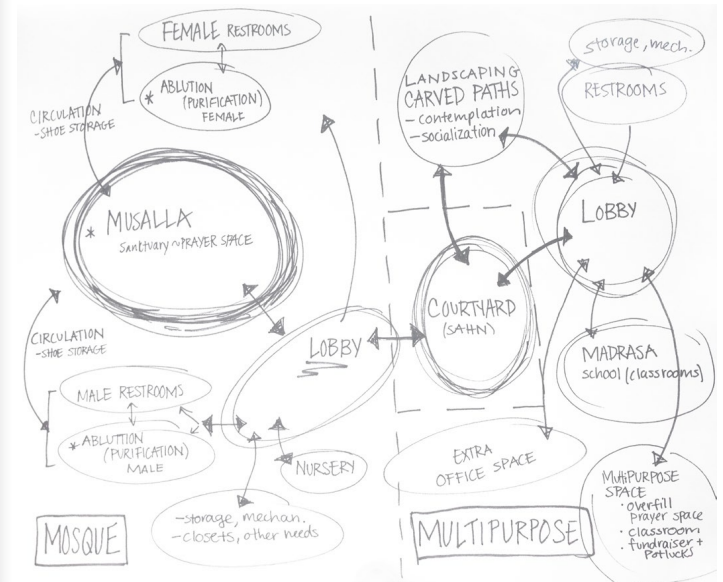
Site Analysis and Program Development



Schematic Drawing: Initial Site Schematic with Program in Mind

SITE East Brunswick, New Jersey

- wooded site
- sloping down to lake
- existing caretaker house
- existing parking lot East

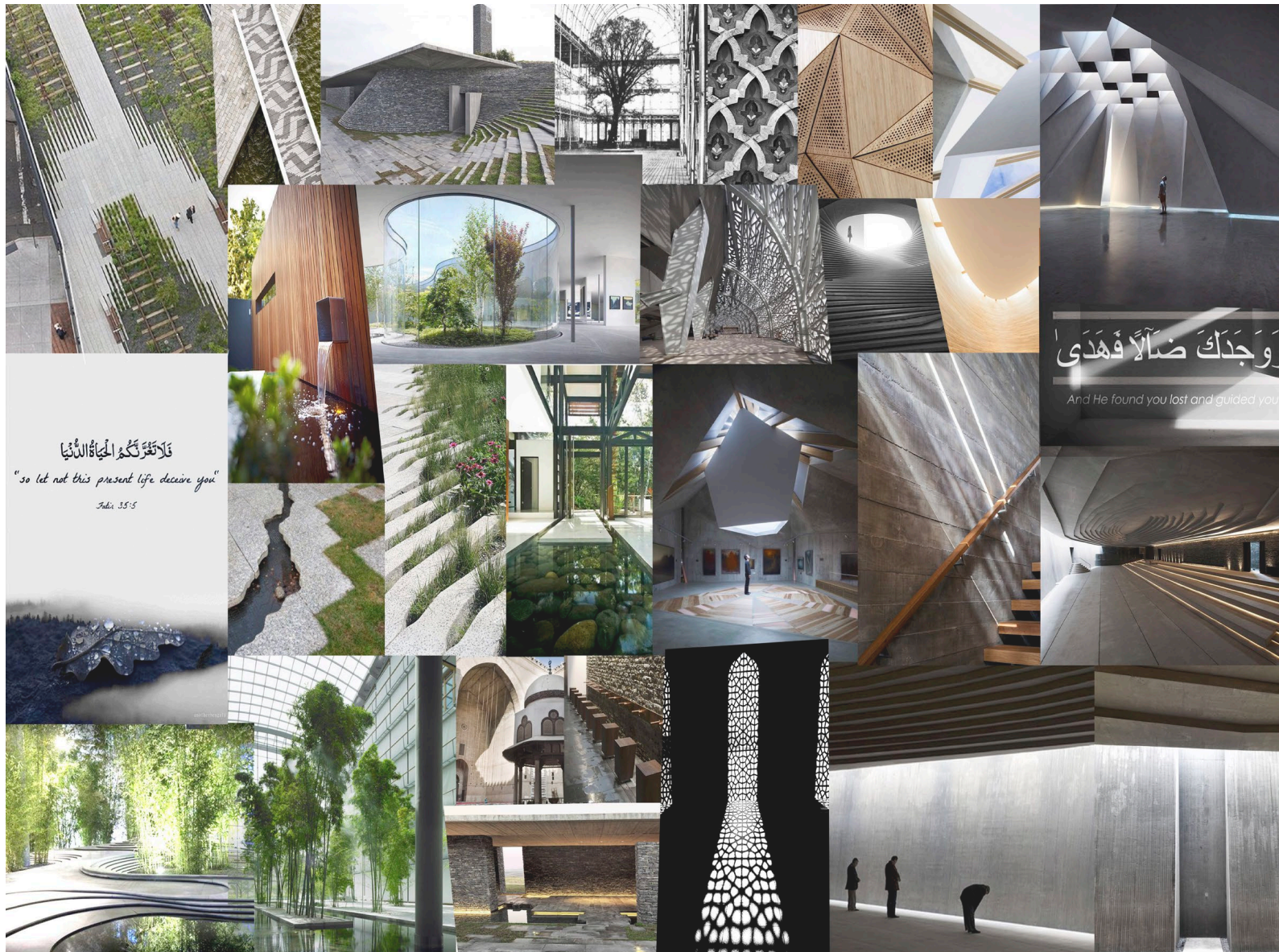


Program Development

DESIGN DEVELOPEMENT

Site Analysis: Analyzing Experience through Imagery

pinterest.com



Site Entry

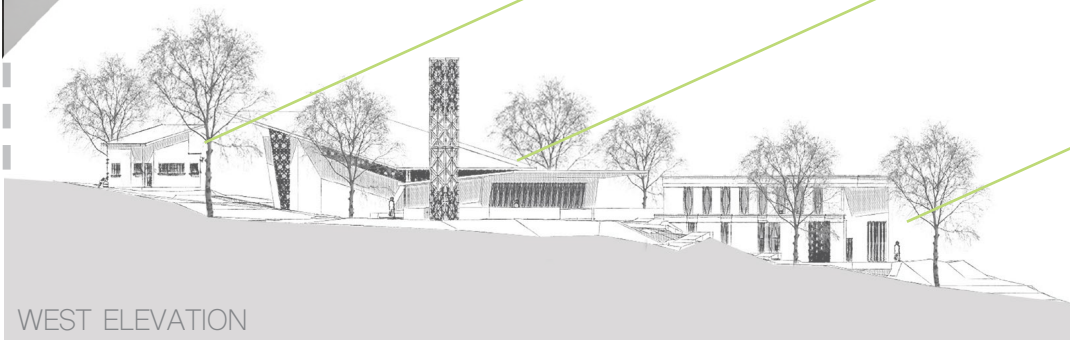
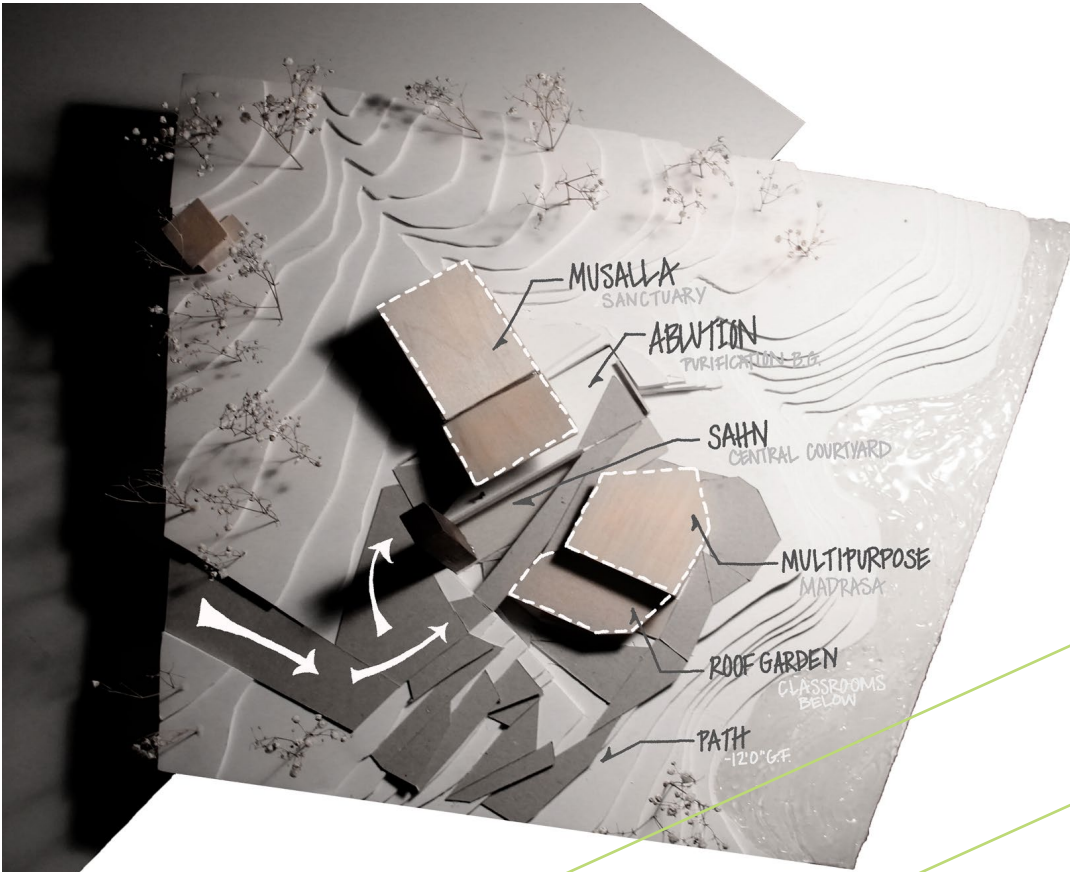
path

Sanctuary

UNDERSTANDING PROGRAM

Site Analysis

TOPOGRAPHIC MODEL & MASSING



WEST ELEVATION

TRANSFORMATIVE EXPERIENCE: SPATIAL DESIGN

Procession from landscape into the mosque should be choreographed not only functionally but conceptually. I attenuated the path across the site to create off axis vignettes on the approach. This culminates a clear direction into the mosque, a reflective and focused space.

The mosque is a destination purification and guidance while the central courtyard links the multipurpose building, cultural center, to reinforce a supportive Muslim community.

SITE STRUCTURES

Existing Caretaker House

Mosque, *Masjid*

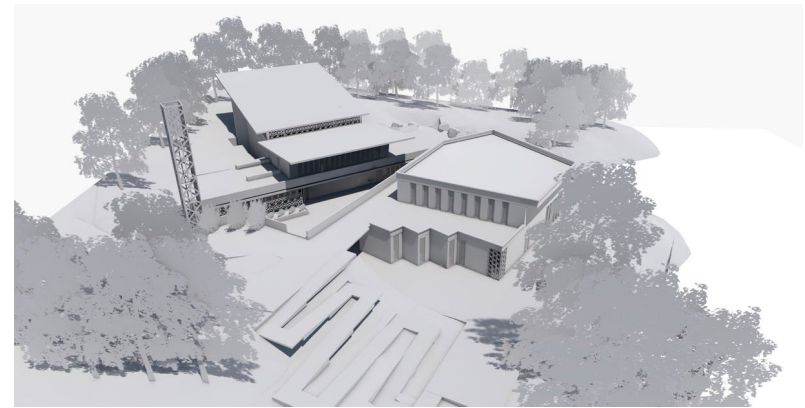
- Sanctuary for Prayers
- Ablution Rooms and Restrooms
- Storage, mechanical, etc.

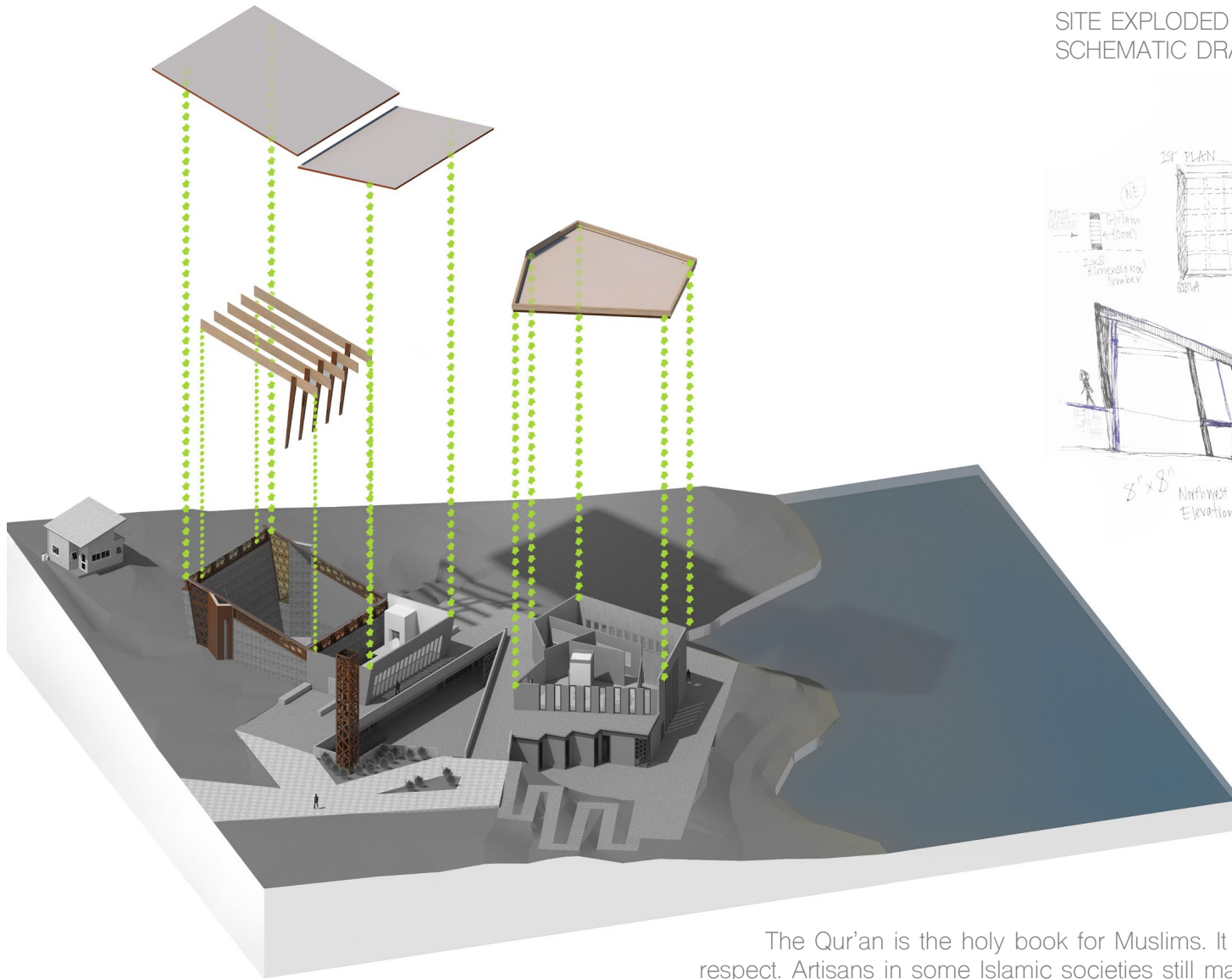
Multipurpose Building

- Classrooms (school, *madrasa*)
- Offices (Faculty, Imam)
- Overflow Prayer Space (multipurpose)
- Restrooms
- Storage, mechanical, etc.

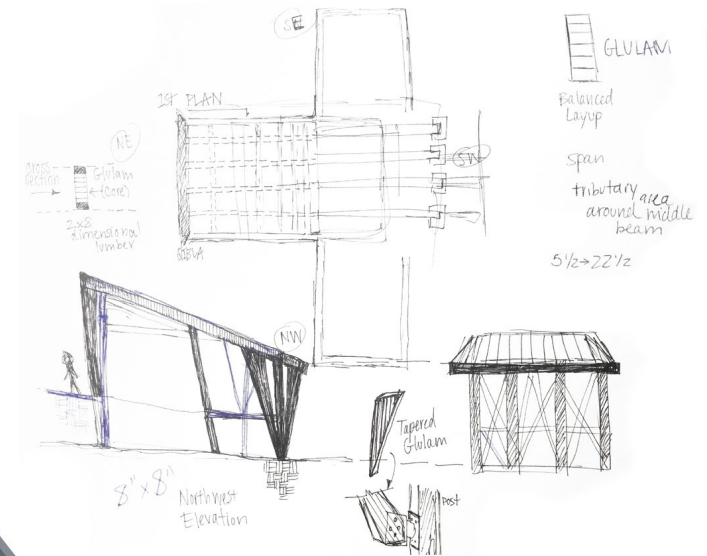
- 1 Sanctuary (Men's Area: Front Area)
- 2 Sanctuary (Women's Area: Mezzanine + Below)
- 3 Multipurpose Space
- 4 Ablution Space
- 5 Classrooms + Teacher Offices
- 6 Courtyard
- 7 ADA Compliant Path
- 8 Offices + Lounge
- ★ Building Entries

FLOOR PLANS
 UNDERSTANDING
 PROGRAM





SITE EXPLODED AXONOMETRIC (LEFT)
SCHEMATIC DRAWINGS OF MOSQUE (BELOW)



MOSQUE FORM

The Qur'an is the holy book for Muslims. It is raised above the ground with respect. Artisans in some Islamic societies still make intricate carved wood book holders which provide the reader to focus on reciting the Arabic scripts. This being said, the sanctuary form is reflective of an open book. As in the open book, the form is a metaphor for revelation and enlightenment. This open roof is perched on a clerestory comprised of a mashrabaya lattice that filters and manipulates light at the perimeter of the space. The sanctuary is devised as a serene and contemplative space.

EAST BRUNSWICK ISLAMIC CENTER

The Minaret, traditionally used for the *Athan* (call for prayer), rises in unison with the retained wooded site as a symbol of existence for Muslims in America. When light passes through the rising lattice, shadows are casted on the ground with the changing day like the grounds of a forrest.



EAST SITE ELEVATION



NORTH SITE ELEVATION



WEST SITE ELEVATION



SOUTH SITE ELEVATION

Building Culture. A Culture of Respect through Architecture

Enriching Minds, Engaging Hearts, & Creating Global Community



Building Spirituality. Sanctuary in Mosque

Manipulating natural light in ways that create tranquility and serenity in a space for prayer and reflection.



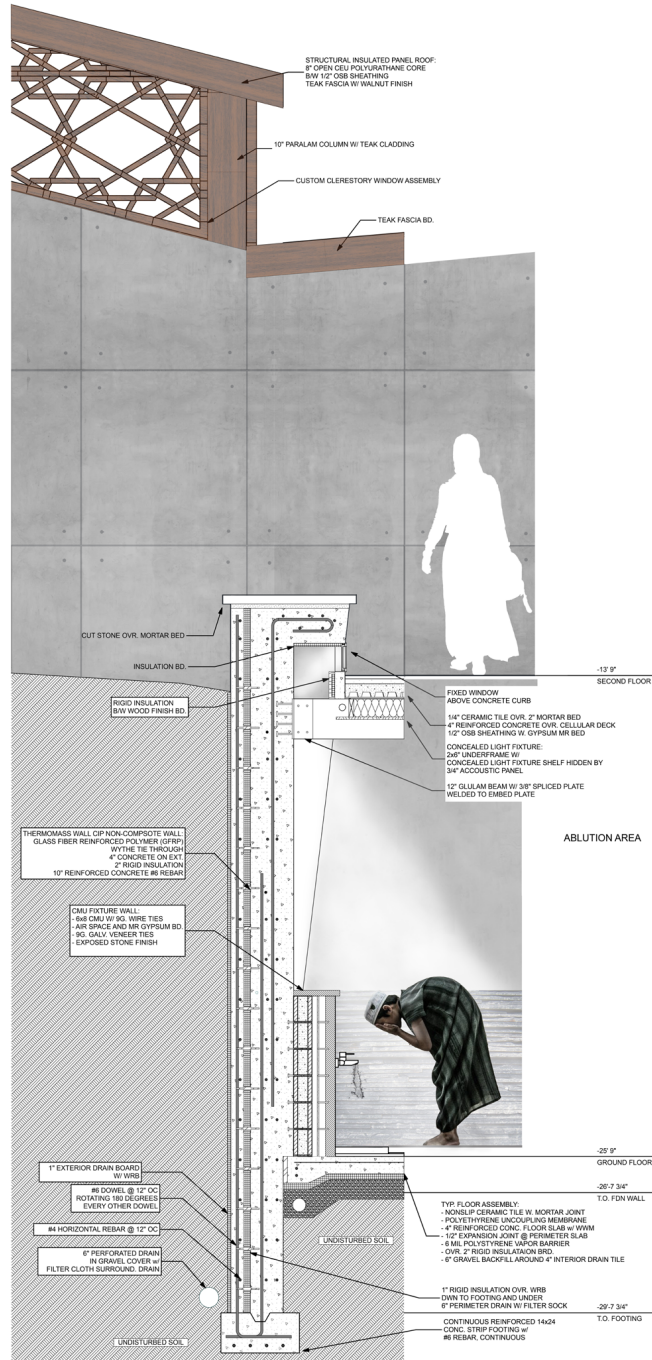
Cross Section of Mosque



Mashrabaya Corner Detail at Clerestory



Interior Perspective from Mezzanine



PHYSICAL MODEL AND CONSTRUCTION DOCUMENT
SCALE 1"=1'-0"

Building Sprituality.

ABLUTION Purification Space

A key functional space in the Mosque

WALL SECTION DETAIL:

- clerestory window sanctuary light source
- exterior seat light well ablutio light source

Employ an austere palette of materials that are revealed in the changing daylight. In addition to the form, the manner in which light enters creates an evocative and compelling experience such as in the wall section detail where natural light flushes down the ablutio wall, a key ritualistic space prior to daily prayers.

Building Community.

Shaping Space into a Place



Southwestern Perspective of Path (Left)
Southern Perspective of Multipurpose Building (Right)

Building Community. Designing for Youth

Education to Foster Positivity in a Global Community

