

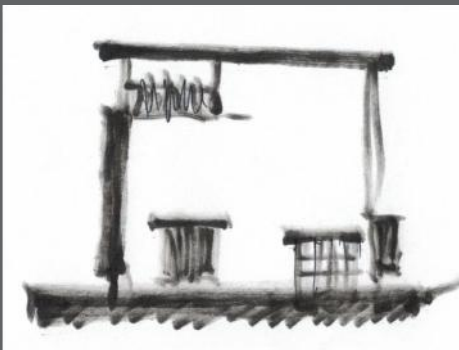


Out Of The Box House

This house began with one central question: How do you make a rectangular box not look and feel like a rectangular box? The clients' need for a house that could accommodate an extended family (6 bedrooms), thereby maximizing the footprint of the house, and the small site (under 6,000 sf) were pointing to just that: A rectangular box. Fortunately, the clients' strong desire for a variety of both interior and exterior spaces for entertaining, recreating, and relaxing provided the strategy for "going outside of the box".

After a careful examination of the County's new zoning regulations every zoning exception was exploited. Exceptions for yard setbacks led to projecting bays for the living room, dining room, stair hall, and screen porch. The front porch was articulated by a flat, plate steel roof and the garage bay was indented. Eroding the 3rd floor led to two green roof decks: a formal one facing the street and an informal one facing the backyard. This 3rd floor was made possible by exploiting a new change in the County's determination of the building height for a flat roof.

This strategy of progression/regression created and enhanced both interior and exterior spaces. The material selections for the exterior were chosen to reinforce this strategy: The basic rectangle is light stucco and the projections/indentations are western red cedar. The majority of the 1st floor was left completely open with a folding glass wall opening to the deck, screen porch, patio, and yard.



Bethesda, Maryland
Residential Architecture





B



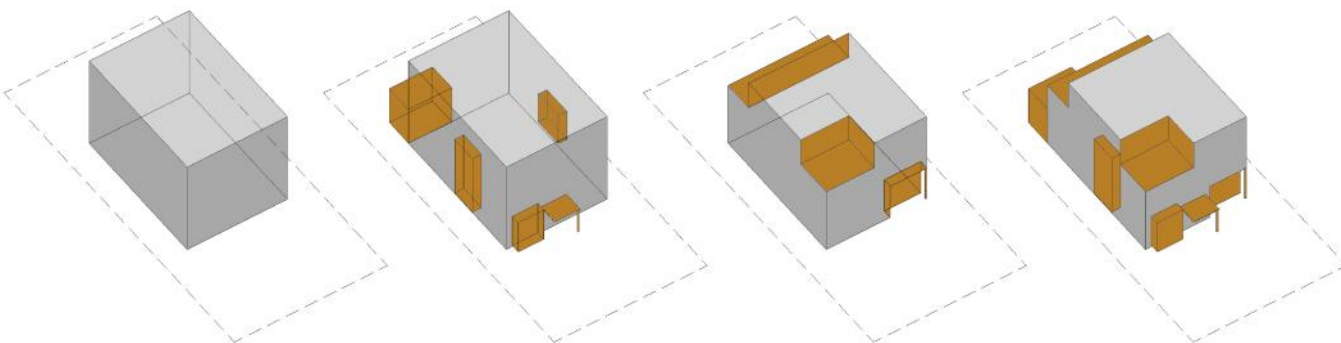
1



2



3



ZONING ANALYSIS

ADDITION

SUBTRACTION

SYNTHESIS

