

# Takoma Park House

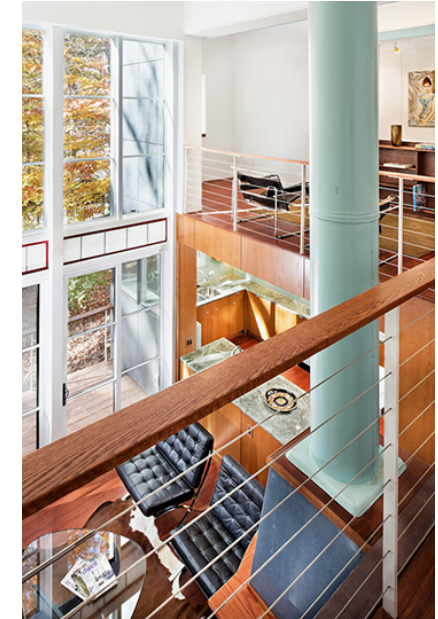
Takoma Park, MD - Residential Architecture

The new family house is positioned along the site's ridge and is oriented toward the creek since it was built in Takoma Park, Maryland, in October 2016.

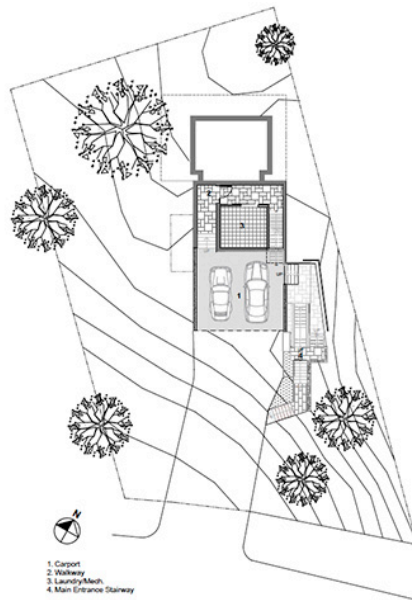
The design illustrates a programmatic separation of the public and private areas of family life. The spatial sequence is composed of layers that extend the vertical stratification of space generated by the organization of the plan. This stratification is parallel to the physical plane of entry. It is literal in reference to 'closed' and 'open,' but should be understood as a spatial metaphor because the horizontal levels are continuous between them to accommodate programmatic and social interaction.



Library with bookcase and high gothic ceiling lights

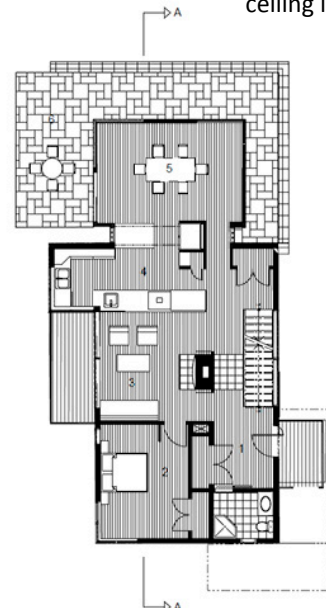


View to living, kitchen, and library with bookcase painting niche.



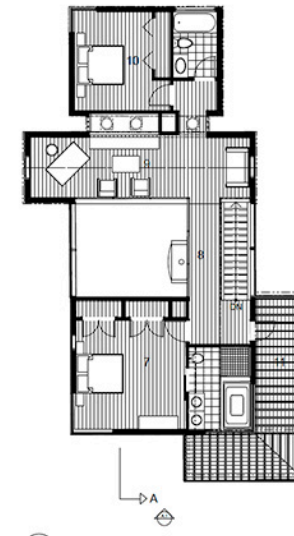
1. Carport
2. Walkway
3. Laundry/Mech.
4. Main Entrance Stairway

SITE PLAN  
SCALE: 1/4" = 1'-0"



1. Main Entrance
2. Guest
3. Living
4. Kitchen
5. Dining
6. Terrace

A-1  
1ST FLOOR PLAN  
SCALE: 1/4" = 1'-0"



7. Master Bedroom
8. Balcony
9. Library
10. Bedroom
11. Deck

A-2  
2ND FLOOR PLAN  
SCALE: 1/4" = 1'-0"

The concrete fireplace is formed with Portland cement, lime, and mortar and is placed on a glazed porcelain base (front and rear). In the kitchen, the tile walls are called Silver Green Mosaic and the marble countertop is called Emeralda. All level floorings are bamboo with cinnamon wide plank, glued on slab. The terrace/landscape panel walls, which lead to a carport, are COR-TON Steel. The doors, including double sliding doors, and windows are produced with exterior aluminum and interior wood panes, rails, and stiles. The two story fiberglass translucent panels with high insulated light transmits a product that is placed on the east elevation exterior wall behind the straight one-way stair.



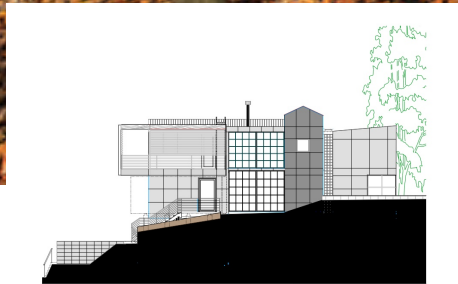
Stairway to main entrance deck with ECO-MESH plant fence.



Kitchen's Emeralda countertop to ceiling skylight view through egg waffle mesh.



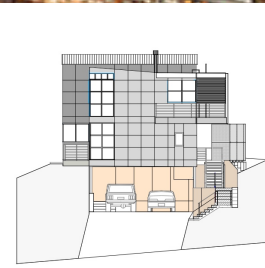
Concrete fireplace with two sides placed on porcelain base in front of the vestibule area with a pivot glass door.



43 EAST ELEVATION  
SCALE: 1/4" = 1'-0"



44 BUILDING SECTION  
SCALE: 1/4" = 1'-0"



45 NORTH ELEVATION  
SCALE: 1/4" = 1'-0"

The total gross area of the house is 3,880 sq.ft. The technical specifications for construction is a mixture of Insulated Concrete Form (structural wall with 5.33cm thick foam) and steel beams and columns. The concrete floor slab is Lite-Deck (concrete with insulated foam) with an installed radiant heating system. The exterior veneer is a fiber cement panel (Cembrit) with three colors – light grey, dark grey, and orange.

The spatial organization of the house is based on a programmatic separation between public and private areas. The family in the household is intended to have a private space for sleeping, bathing, and retirement. The private part of the house is located on the entry side and faces land, forest, and road. It consists of a series of closed, linear spaces organized throughout the two and half levels. The public spaces where the family conjoins are at the rear of the house, overlooking the creek in the park.



Master bath with double sinks on the floating vanity, jacuzzi, egg-waffle light, wood barn door with foggy-glass, and access door to outdoor deck.



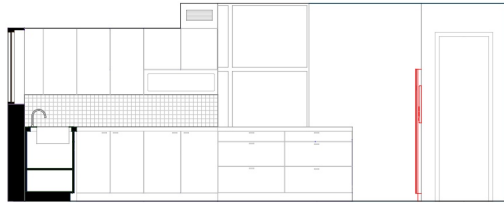
Main entrance pivot glass door.



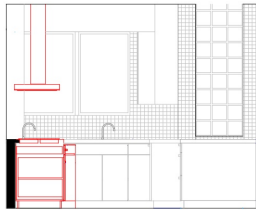
Second floor deck with trellis, large metal gutter and ship ladder to roof.



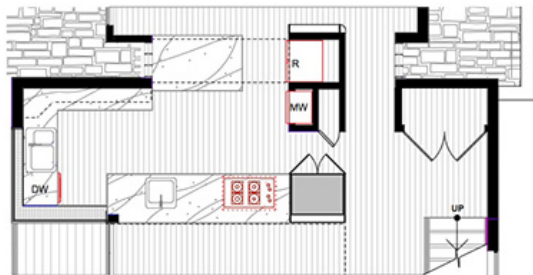
Master bath with double sinks on the floating vanity, wall mount toilet with tank, and wood barn door with foggy-glass.



**C** ELEVATION  
SCALE: 1/2" = 1'-0"



**B** ELEVATION  
SCALE: 1/2" = 1'-0"



**A** KITCHEN  
SCALE: 1/4" = 1'-0"



Kitchen in between dining and fireplace, opening to the second floor with one-way straight stair and translucent panels at the rear.



Kitchen with forest and creek view, open space between living and dining with two double-sliding doors to an outdoor deck and rear terrace.



Dining with shelves, foggy glass panel cabinet, forest viewing, and walking through double-sliding doors to a rear terrace.



Three mock-up house views on the site with existing bungalows relationship, conserving trees and forest.



The compact prismatic form of the house expresses a certain attitude toward the site: apart from being a shelter, the house is also an object, which reflects and refracts the environmental land around its structure. The modern house is rooted in the historical city of Takoma Park, known for its detached bungalow houses.