

CENTER FOR BEHAVIORAL HEALTH - MARION VA MEDICAL CENTER

The central purpose or mission of this facility is to consolidate outpatient Mental Health services in a single location while integrating these services with the other Mental Health programs already in place on the campus. Consolidation of services and the potential to interrelate and maximize resources at a single location resulted in the selection of the proposed site and building location at the corner of Commander Drive (the Main Entry Road) and North Perimeter Road (now called Blue Star Memorial Highway) at the Marion VA Medical Center in Marion, Illinois.

The two story Behavioral Health facility contains a gross building area of approximately 30,000 square feet. The building is part of an emerging Behavioral Services cluster along the north side of the medical center campus, all visible from the main entrance drive. There are 60 parking spaces directly serving the facility on the building's west side, general parking is also available east of the building.

The original Art-Deco, "Egyptian" style hospital facility is the focus of the medical campus: the main tower is the vertical terminus of tree-lined Commander Drive. The new building's architecture reflects the best traditions of the campus, but is interpreted for today. Prominent entry elements, limestone facades and vertical window patterns of the hospital main front are used in a more contemporary way, without need to duplicate the hospital's original motif.

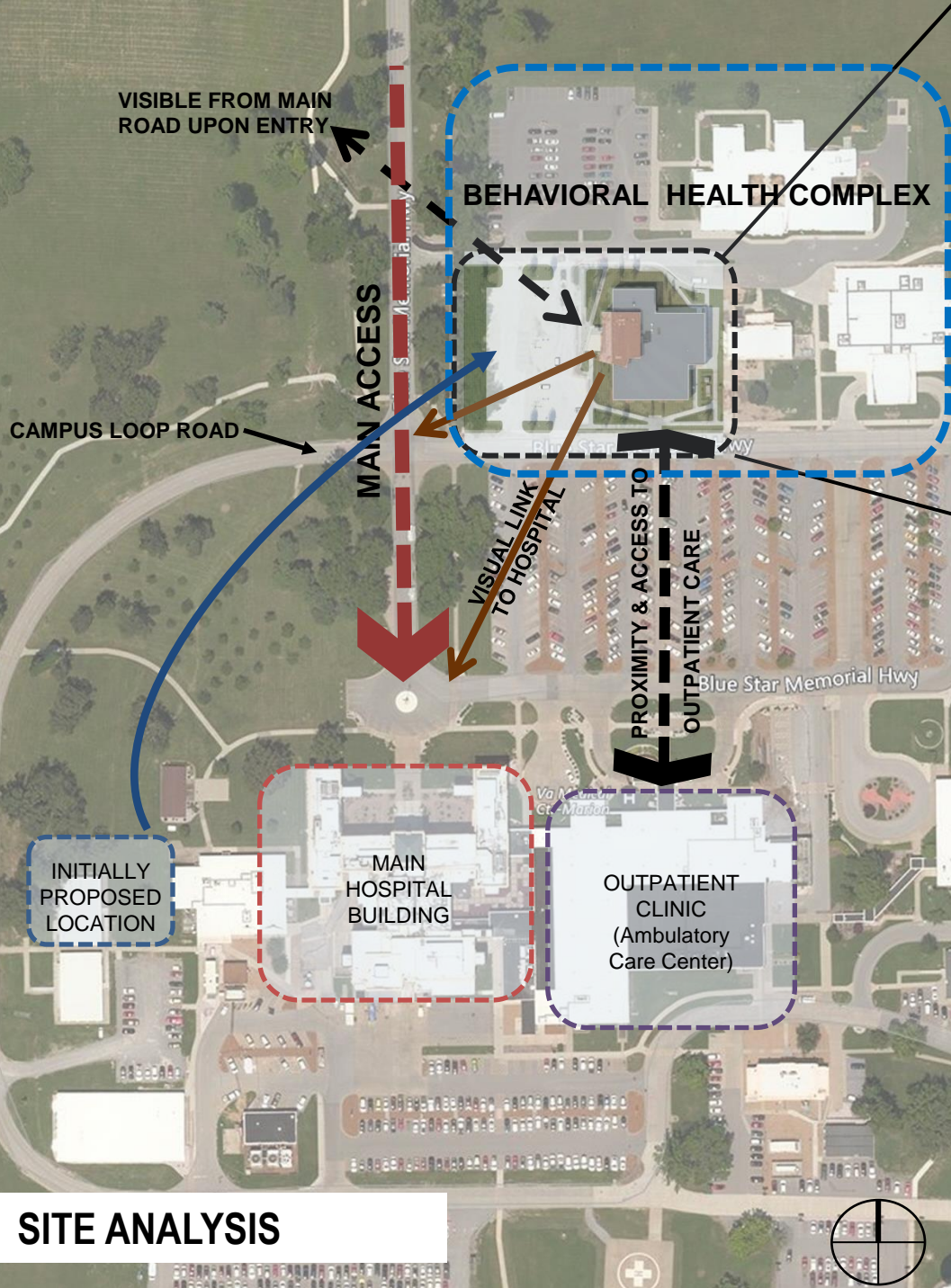


EXTERIOR VIEW

CREDIT: © 2015

TWO-STORY MEDICAL CLINIC

02



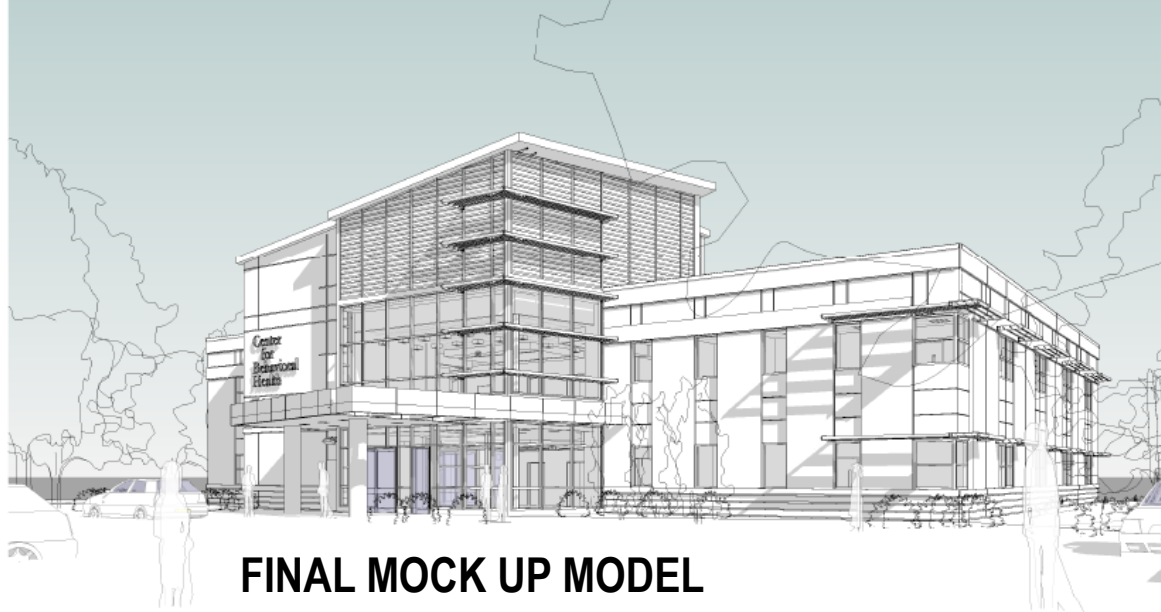
SITE ANALYSIS



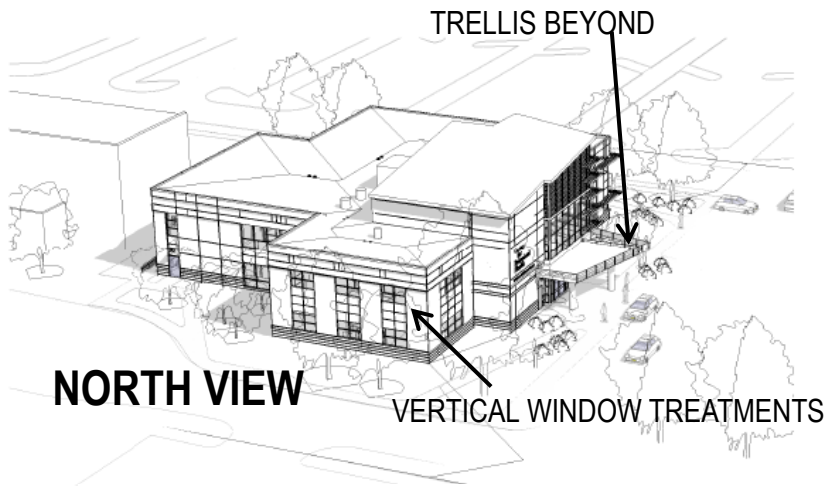
SITE PLAN

SITE PLANNING CRITERIA

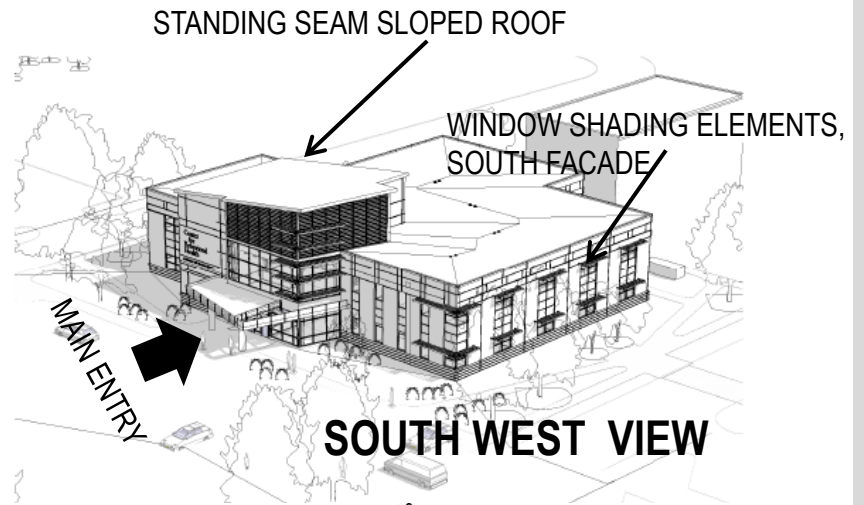
- Location on the campus. Initially, the clinic was to be connected to the main hospital. However after collaboration and evaluation by the design team and the Users, the current location was chosen. Factors for making the selected location include:
 - Proximity to the existing Psychosocial Residential Rehabilitation Treatment Program or PR RTP facility,
 - Proximity to Ambulatory Care Center and the Inpatient Mental Health components of the main Medical Center so that patient and staff interchange between these areas is facilitated.
- Prominent visibility of the site on the campus



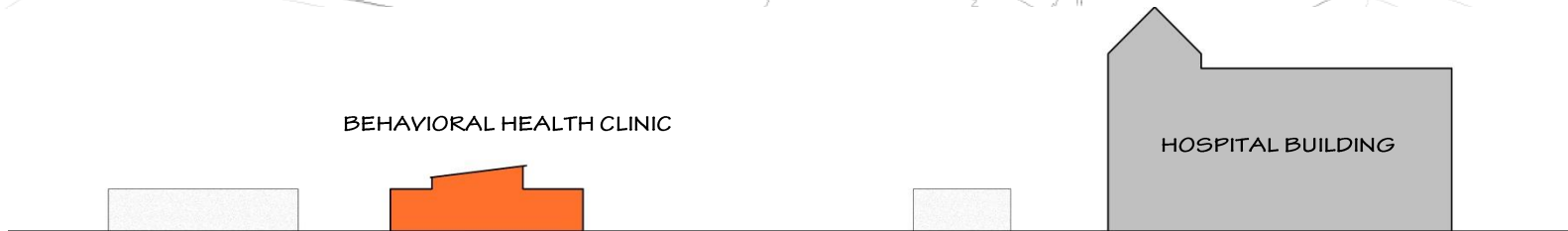
FINAL MOCK UP MODEL



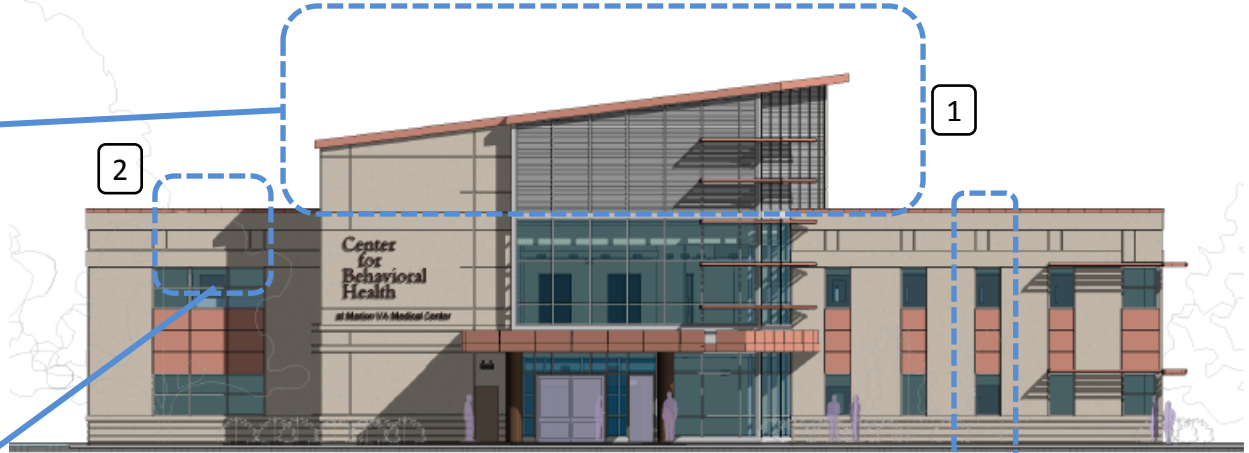
NORTH VIEW



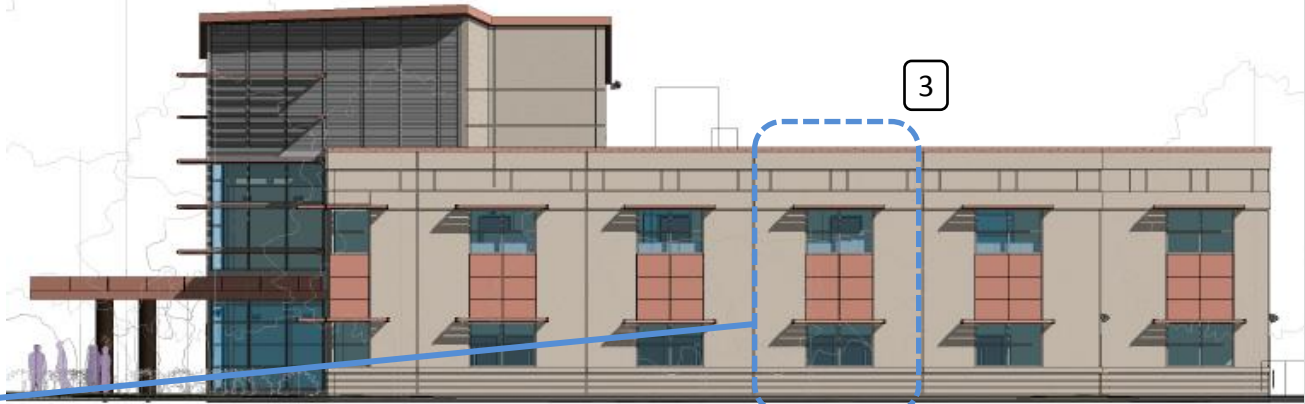
SOUTH WEST VIEW



SITE SECTION



WEST ELEVATION



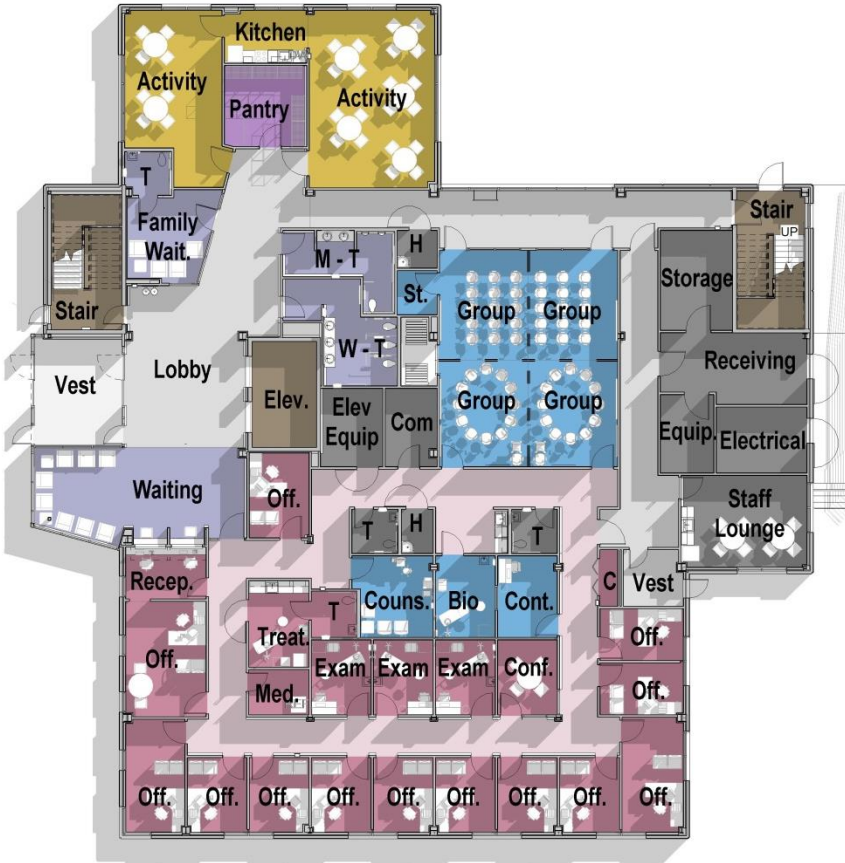
SOUTH ELEVATION

Exterior Envelope

1. The original Art-Deco, “Egyptian” style hospital facility is the focus of the medical campus: it is the terminus of tree lined Main Access Road and is the rationale for the development of an expressive terminus for the clinic roof.
2. Ideas of exterior building finish come from the indigenous stone of the region which is prevalent on the campus.
3. Limestone facades and vertical window patterns of the hospital are used in a more contemporary way, to complement the feature of the main structure on the campus.

Department Legend

- Building Circulation
- Building Support
- Common and Learning
- Day Treatment
- Mental Health Clinic
- Public Areas
- Special Programs
- Support Spaces
- Vertical Circulation



LEVEL 1



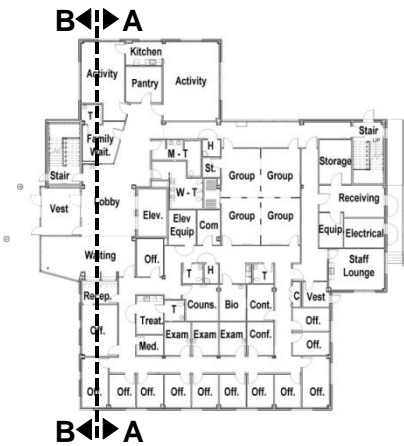
LEVEL 2



SECTION - 3D VIEW (A-A)



SECTION B-B



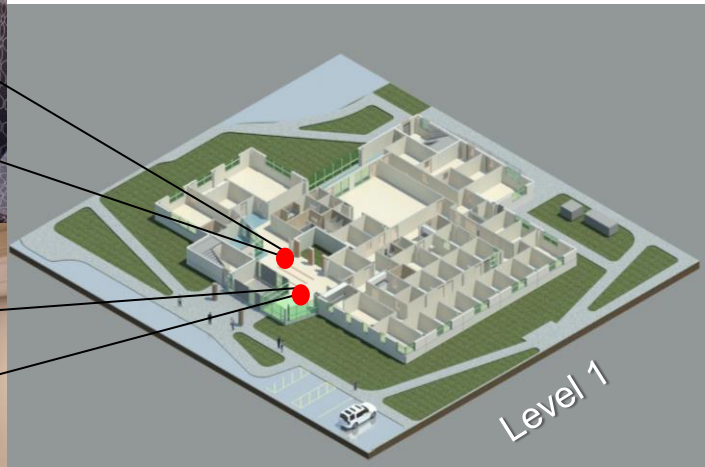
KEY PLAN





Entrance Lobby

The Entrance Lobby is a major function in the Behavioral Health Clinic. There are two reception areas, one on each of the two levels. These spaces serve to introduce patients into the facility and allows ample space for family members and care providers as well.



Family Waiting Area

A complement to the Main entrance lobby is the Family Waiting Area. This space affords the caregivers and family members a private area for individualized and personal interactions. The visual link to the main hospital building was a major requirement for the project.



Open Office Area

Behavioral Health requires space that is proximate to the various counselor and ancillary support functions. Adjacencies to Work Rooms for staff and Group Rooms for patients aid in the enhancement of counseling for Substance Abuse and other clinical support services.



Level 2 Lobby

As with the Main Entrance Lobby, the second level lobby is an important component of the Behavioral Health Facility. Connection to nature/open space, daylighting, and visual link to the Main Hospital are a constant theme throughout the common areas.

CENTER FOR BEHAVIORAL HEALTH - MARION VA MEDICAL CENTER

Design Objectives

Key design objectives for the project include providing a building constructed of quality materials which has a visible presence on the Medical Center Campus in order to make a statement regarding the importance of Veterans' Mental Health while meeting the needs of the patients and staff it supports. This was done through building siting, selection of materials, and the planning of the facility in a collaborative process with the Users. The siting and design provide a welcoming entrance with convenient access for patients with adequate parking nearby.



Planning and Siting

The following key planning and design objectives were incorporated into development of the Center for Behavioral Health Facility:

- Proximity to the existing Psychosocial Residential Rehabilitation Treatment Program (PR RTP) departments,
- Direct sight line and access to Ambulatory Care Center and the Inpatient Mental Health components of the main Medical Center so that patient and staff interchange between these areas is facilitated,
- Prominent visibility of the site on the campus,
- Maximized daylight and considerations for other “Planetree” design features to ensure a comfortable and positive patient experience,
- Make the optimum use of limited program square footage by emphasizing shared use of resources in multi-purpose space designed for flexibility of use over time.

All these design requirements were exceeded in the design and placement of the Behavioral Health Facility.