



# HOTEL ZERO DEGREES

DANBURY, CONNECTICUT

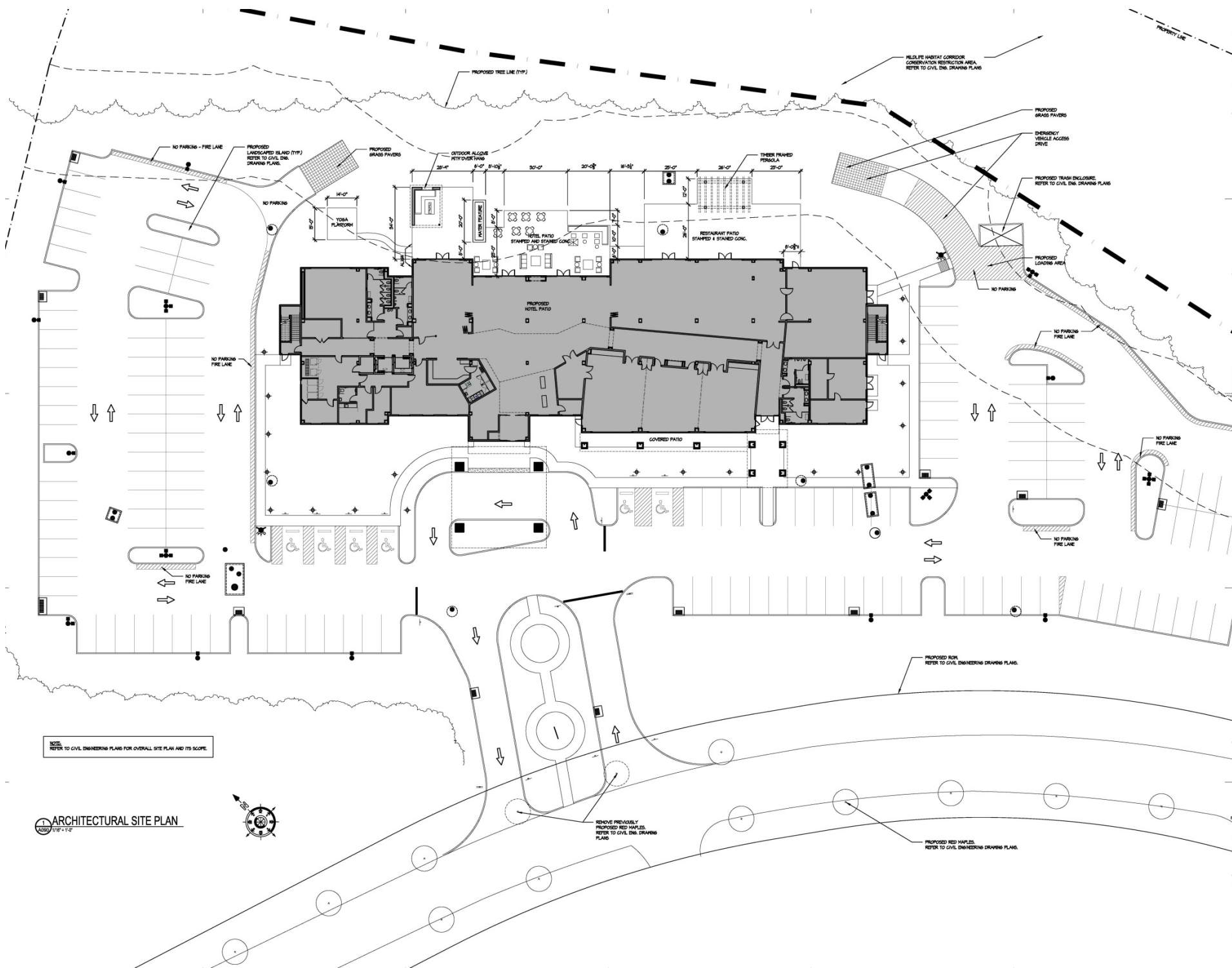
## COMMERCIAL ARCHITECTURE

We are proud to present our design of Hotel Zero Degrees in Danbury, Connecticut for the 2017 AIA Potomac Valley Excellence in Design Awards. This new-build hotel is the third location for the boutique brand, and features 114 guestrooms, a 2,600-sq.-ft. ballroom, and a 100-seat restaurant.

The building's striking exterior features a warm grey pallet with stacked ledgestone accents, a vertical batten base, and grey cementitious siding. The modern lodge architecture is accentuated with large, exposed wooden beams, asymmetrical massing, and overhangs supported on wooden brackets that give off a contemporary country feel.

The sleek interior is lined with expansive windows that let in an abundance of natural light and look out at the wooded area beyond the hotel. The focal point of the lobby is a stunning two-story fireplace that is wrapped in metal and stone, surrounded by flexible furnishings that encourage gathering and connecting. The hotel offers rooms with one king bed or two queen beds, and suites that are available for extended stays. Each room has an open layout with ample working, lounging and sleeping space.

Hotel Zero Degrees Danbury offers a cosmopolitan feel in a country setting, with exterior and interior designs that are relaxed yet sophisticated. The stark contrast between the rustic lodge architecture and contemporary furnishings is exactly what makes the two work together in this perfect portrayal of modern lodge design. Since opening this past November, the boutique hotel has become a destination for visitors as well as local residents.



NOTE:  
REFER TO CIVIL ENGINEERING PLANS FOR OVERALL SITE PLAN AND ITS SCOPE.

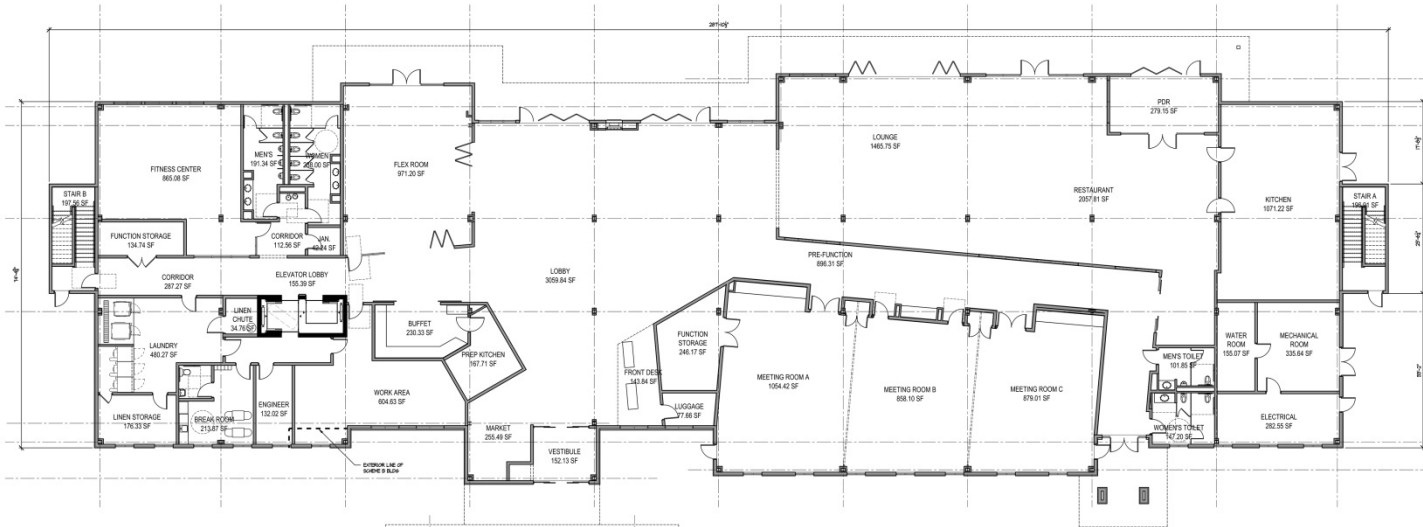
ARCHITECTURAL SITE PLAN  
1/8" = 1'-0"



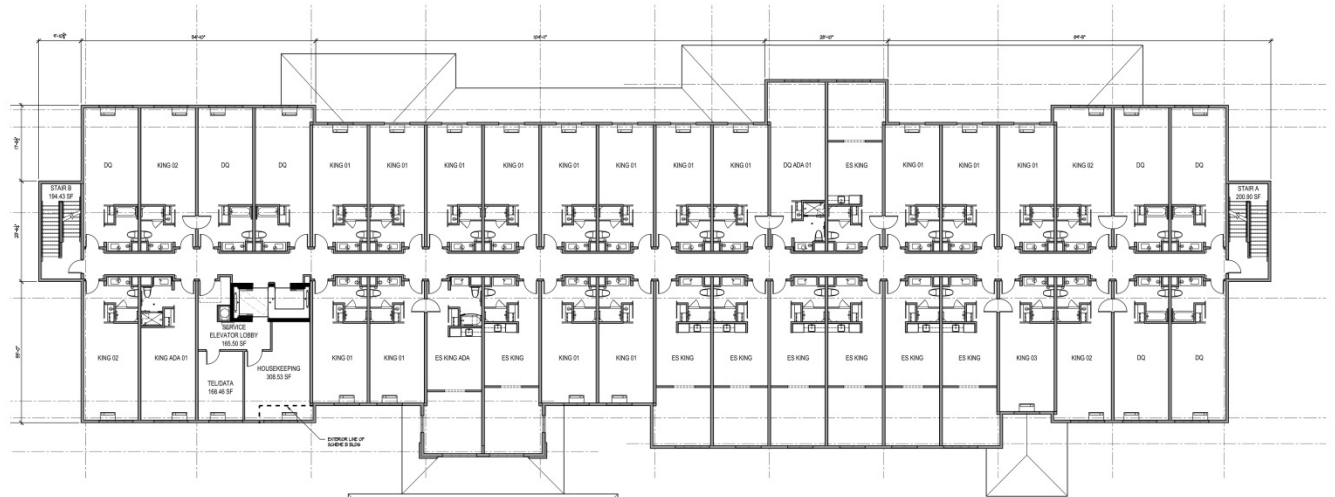
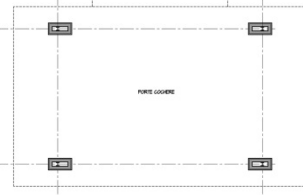
REMOVE PREVIOUSLY  
PROPOSED RED MAPLES.  
REFER TO CIVIL ENG. DRAWING  
PLANS.

PROPOSED ROOF  
REFER TO CIVIL ENGINEERING DRAWING PLANS.

PROPOSED RED MAPLES.  
REFER TO CIVIL ENGINEERING DRAWING PLANS.



FIRST FLOOR PLAN



TYPICAL FLOOR PLAN

