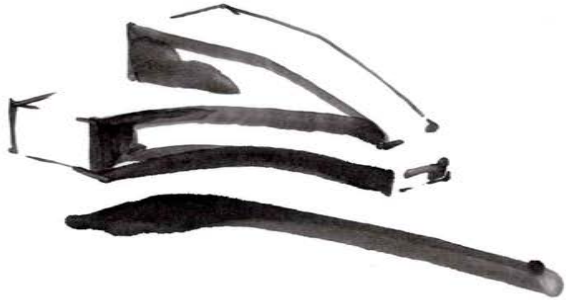


# Mathewson Residence

Washington, DC  
Residential Architecture

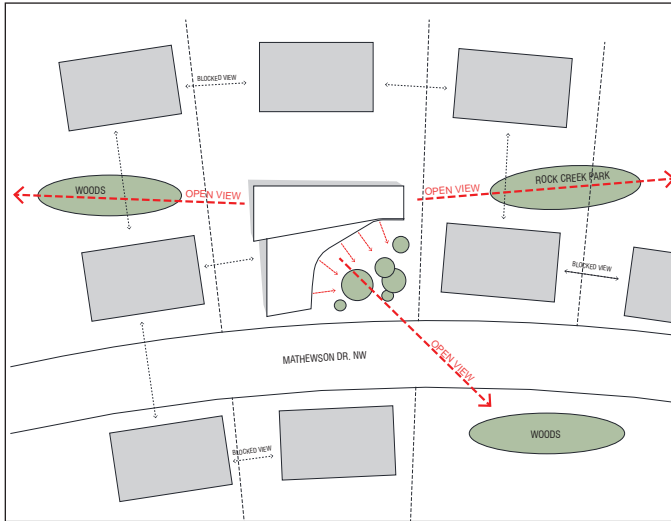


The Mathewson Residence is a single family home designed for an undeveloped, topographically challenging lot, in the heart of Washington DC. Other homes on the street are typically more traditional in shape and material and orientation to the street.

The solution for the organization of the house was to create a series of forms that would take advantage of the views available from the site, toward nearby Rock Creek Park and within the neighborhood. Each floor level is oriented to a different part of the site, intentionally framing views, using the shapes of rooms and openings to direct sight lines. The lower level steps back, while the second floor curves around the landscaped area at the front of the house. The two ends of that floor level push out into the landscape to take advantage of views in two other directions. The upper floor is laid out in a way to take advantage of the southern sun at the back of the property. The main themes of connection and diversity of experience drive the dialogue between the interior spaces and the surrounding landscape.

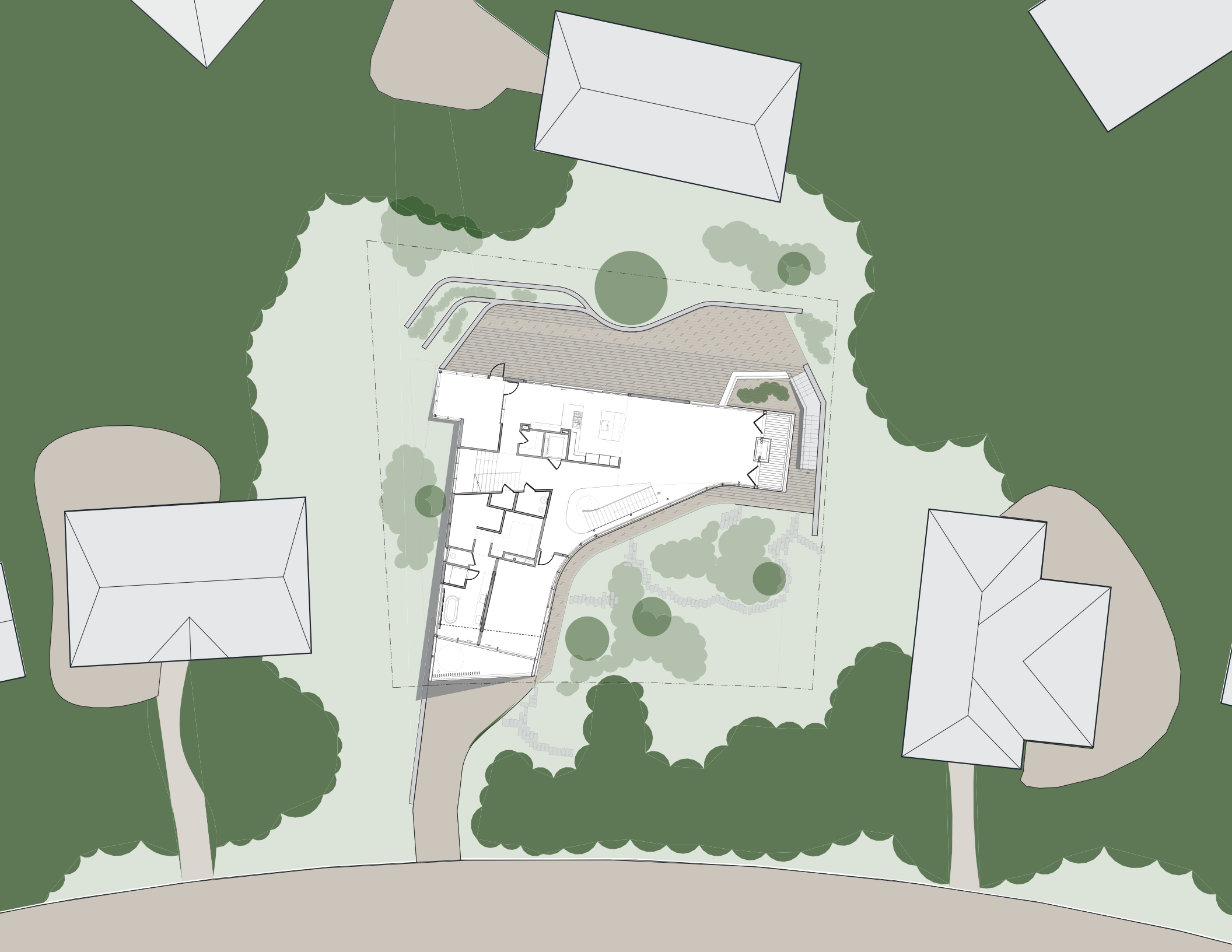


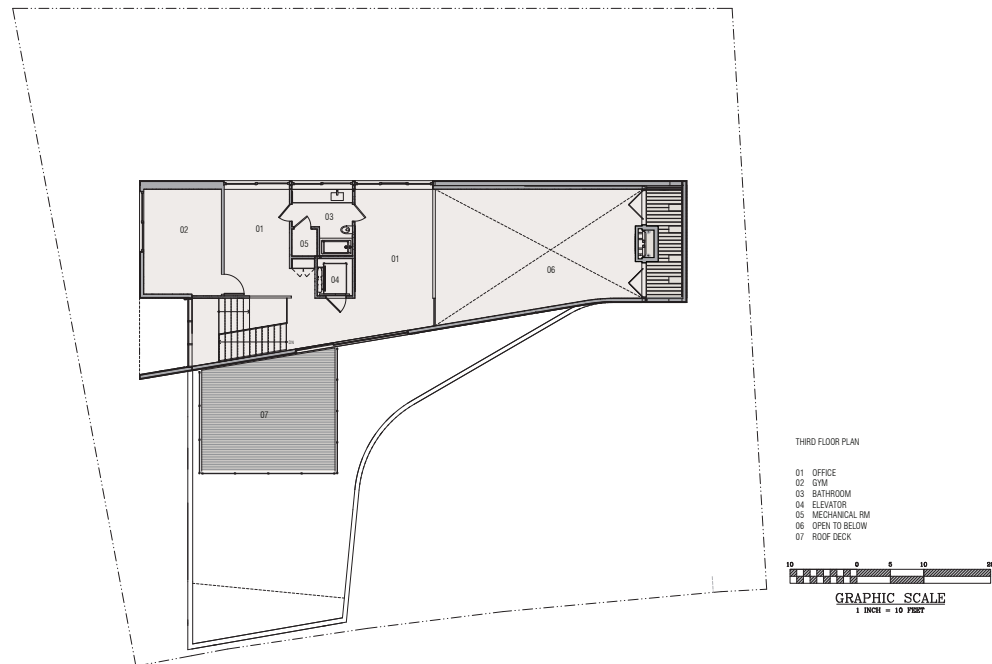
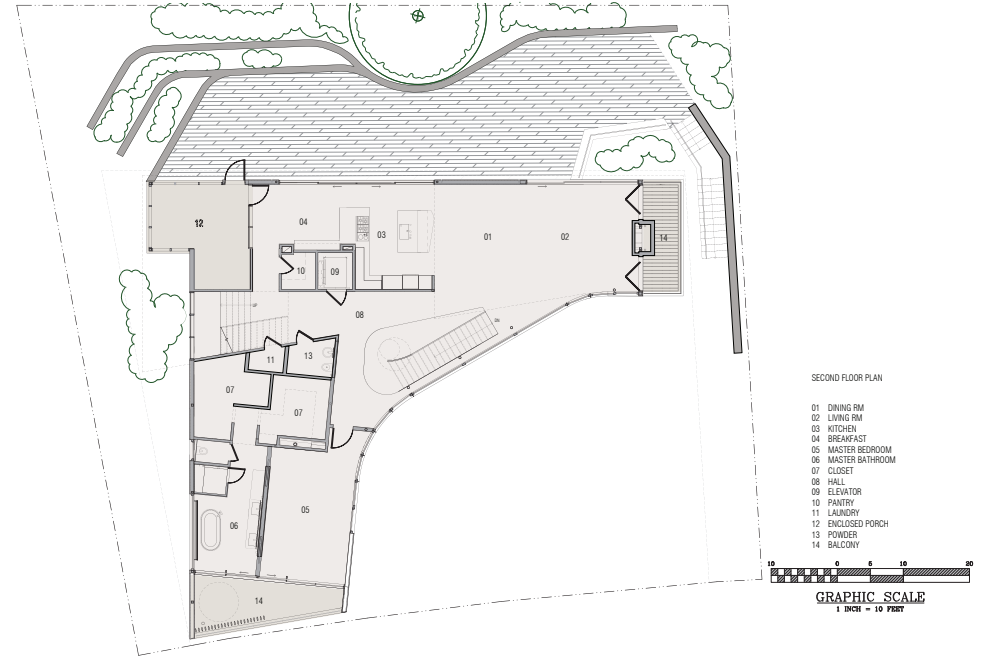
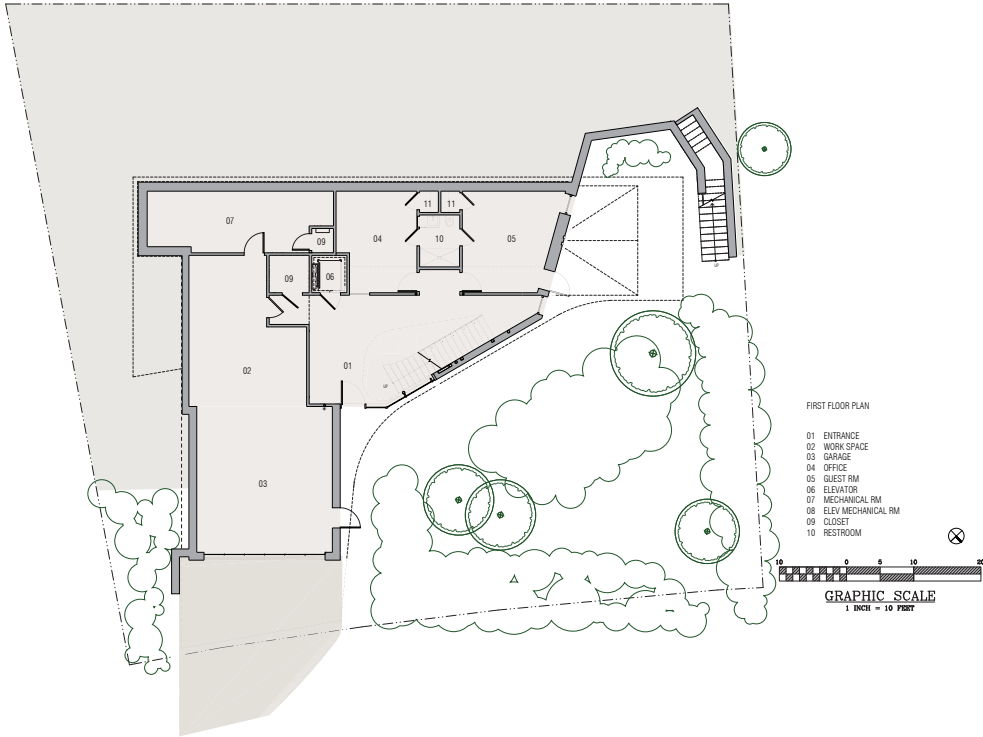


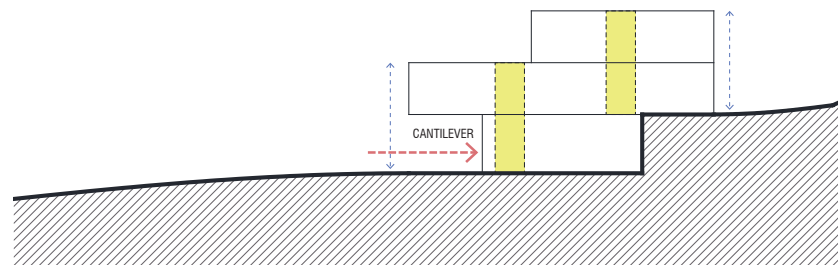
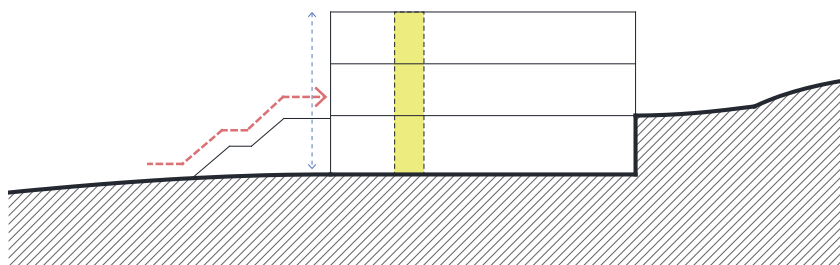
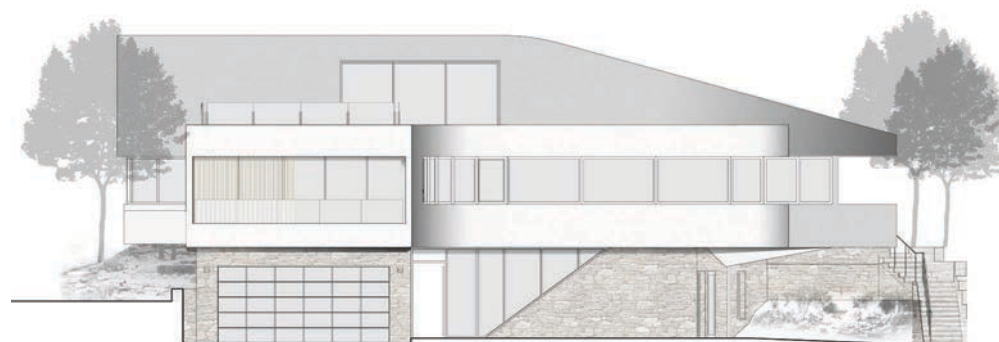
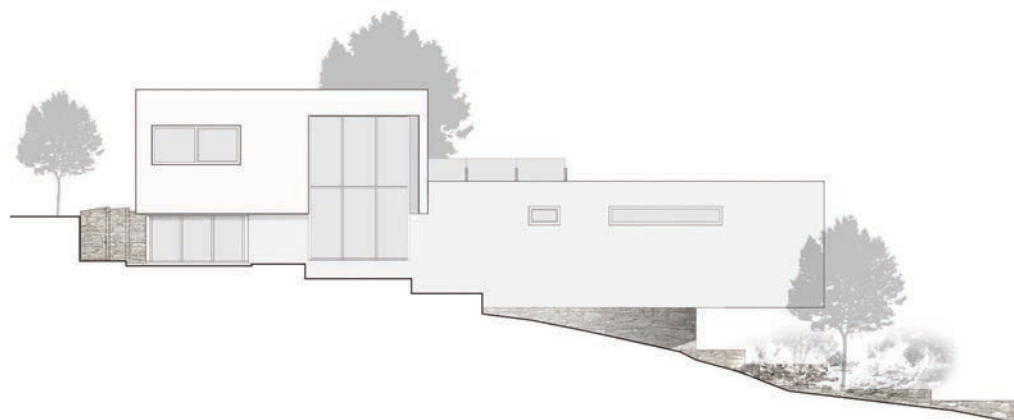


The stone-clad base of the house is carved from the hillside and sits in contrast to the white, floating volumes above. There is a feeling of weight and stability at the lower level, which is fully grounded and cradled within the rocky site. While the lower level appears to look inward, the upper floors of the home with large expanses of glass, and cantilevered terraces are the counterpoint, light and open, bright and weightless. The sinuous white sculpted stucco and glass volumes hover above the landscape.









The design emerged through a carefully considered dialogue between architect and client, architect and site. The forces that lead to the solution were envisioned as being in partnership, including the dialogue between the base and upper volumes of the house. It remains a dialogue, restful yet dynamic.

