

# TUCKER HALL RENOVATION

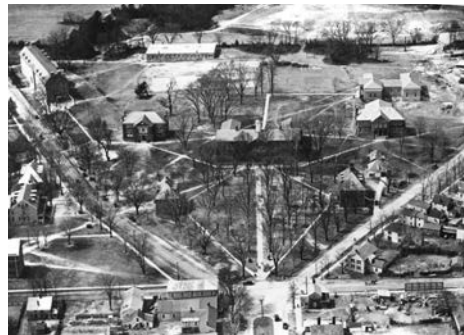
THE COLLEGE OF WILLIAM & MARY, WILLIAMSBURG, VA  
PROJECT CATEGORY: INSTITUTIONAL ARCHITECTURE

Historic Tucker Hall is located in the heart of the Old Campus portion of the College of William & Mary. It occupies an important place directly adjacent to the Sir Christopher Wren Building, the College's most cherished landmark and the oldest college building still standing in the United States. Dating back to the late seventeenth century, the Wren Building has served as the joint between the town of Colonial Williamsburg to the east and the College to the west. With such a prominent neighbor and such a central and historic location, Tucker Hall needed a renovation respectful of its gracious and traditional exterior. The interior of the building, however, was in dire need of a new vision.

When the time came for a much-needed renovation, the project team immediately honed in on the primary elements for a reimagined Tucker Hall: respecting and preserving the exterior facade, restoring its remaining interior historical elements such as the Stair Hall and Cupola, creating a new clarity in the circulation of the building, and allowing more light and visual connections in its spaces. Working closely with the College's Facilities Management team and the English Department faculty, the design team also recognized the need for a new accessibility throughout, incorporation of environmentally sustainable elements, and the creation of new spaces for student gathering and student-professor interaction. Despite several stops and starts due to state budget issues, the team worked through and achieved all their primary goals. Tucker Hall was opened for classes in 2013 and completed in 2014. It has been awarded LEED - Gold for sustainability, and is currently serving an overjoyed English Department and student body.



RESTORED TUCKER HALL - AFTER



COLLEGE OF WILLIAM & MARY OLD CAMPUS



THE HISTORICALLY PROMINENT WREN BUILDING



TUCKER HALL WITH 2ND 1929 ADDITION / PHOTO C. 1934



# TUCKER HALL HISTORY

## ORIGINAL TO PRESENT DAY

Though a town and campus steeped in history surround it, Tucker Hall's history is rich itself. Originally constructed in 1908, and funded in part by the Carnegie Foundation, the cross-shaped form constituted the College's first library building. In 1922 it was doubled in size with an additional reading room and book stacks addition on the north side, converting the building into an H-shape. In 1929, it was expanded yet again, with a three-story addition in the center of the "H". As the College grew in the 1960s, a new library was built and Tucker Hall was converted to the Law School. At that time, Tucker Hall experienced a major interior renovation and conversion, chopping up the library's grand spaces in favor of faculty offices, assorted classrooms, and a moot courtroom. Though the converted building suited the changed needs, the repurposing created a rabbit warren of dead end halls, strange up and down corridors, and dark paths and corners. As the Law School moved out in 1980, Tucker Hall then became home to its current inhabitant, the English Department.

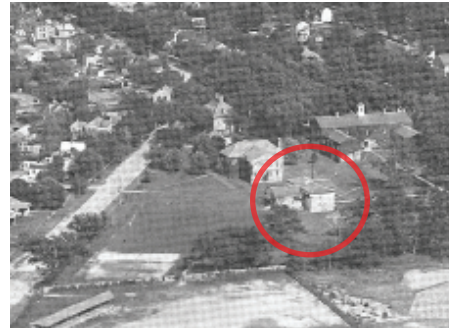
During this recent renovation, the team respected, renovated and refreshed one of the important interior historical elements, the Stair Hall. Before the 1960s, the Stair Hall was open on both sides and served as the library's reading room. As a gesture harkening back to that old grand space, the design team maintained the Stair Hall as an entry lobby but created new visibility into the classrooms on either side and to the new rear lobby and theater entrance beyond.



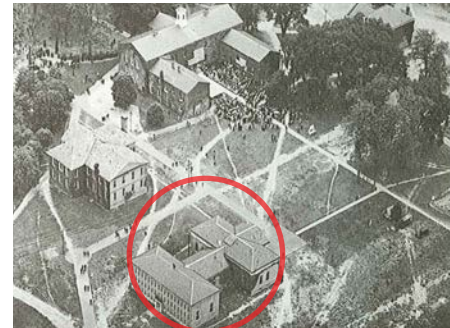
RESTORED STAIR HALL - AFTER



ORIGINAL STAIR HALL - BEFORE



ORIGINAL TUCKER HALL, BUILT 1908. / PHOTO C. 1920



TUCKER HALL WITH 1ST 1922 ADDITION / PHOTO C. 1926



TUCKER HALL WITH 2ND 1929 ADDITION PHOTO /C. 1934

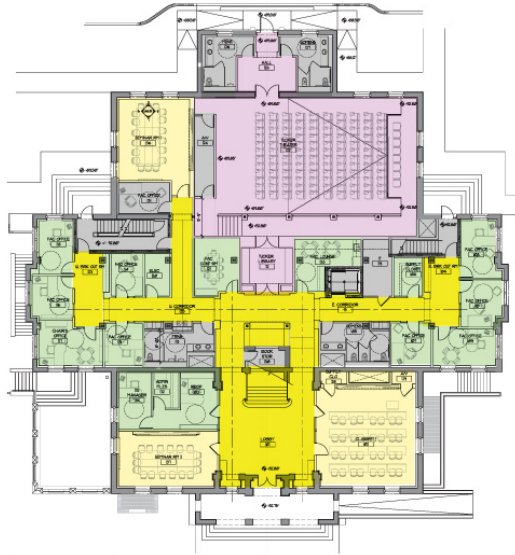


# FIRST FLOOR

## CLARITY & HISTORIC RENEWAL

The diagram below shows the newly organized and modified First Floor Plan with central circulation from south to north and east to west, a theme repeated on the floors above and below. In the space below the grand stair, a forgotten leftover space in the Rear Lobby was reimagined as an open connection between the Stair Hall, the halls on either side, and the Theater entry beyond. The new Rear Lobby also contains an intimate space in the center, below the main stair, for students to pause, congregate, and study as shown in the image on the right.

New classrooms and faculty offices have been created throughout the building and modernized with state of the art technology to better meet the English Department's needs and interactive teaching styles as seen in the photos below.



### FIRST FLOOR PLAN

- CIRCULATION
- CLASSROOM
- OFFICE / FACULTY
- TUCKER THEATER
- BLDG SUPPORT



RENOVATED REAR LOBBY - AFTER



ORIGINAL REAR LOBBY - BEFORE



NEW FACULTY OFFICE AT FIRST FLOOR - AFTER



NEW CLASSROOM ADJACENT TO STAIR HALL - AFTER



# FIRST FLOOR

## CLARITY & HISTORIC RENEWAL

The Tucker Theater has continually been an important space for large campus wide lectures and events, including its tenure serving as a Moot Court Room space from 1967 to 1980 when the building was occupied by the College's School of Law. After many decades of wear and tear, the space had become dark, noisy, and in disrepair. Additionally, its access was isolated from the south side of the building on the interior and lacked an accessible entrance at the north side of the building on the exterior. Through a complete reworking of the design of the Theater, the team refreshed and quieted the space as well as strengthened the entries from within the building and the exterior. The creation of the columned walkway on the south side of the Theater solved the interior access issue and provided a new design element. The team also turned the need for acoustical control into a design opportunity and worked through several studies for the ceiling and wall configurations. The new horseshoe shaped wood acoustical ceiling and rear moveable acoustical wood window screen panels allow the space today to accommodate multiple types of presentations.



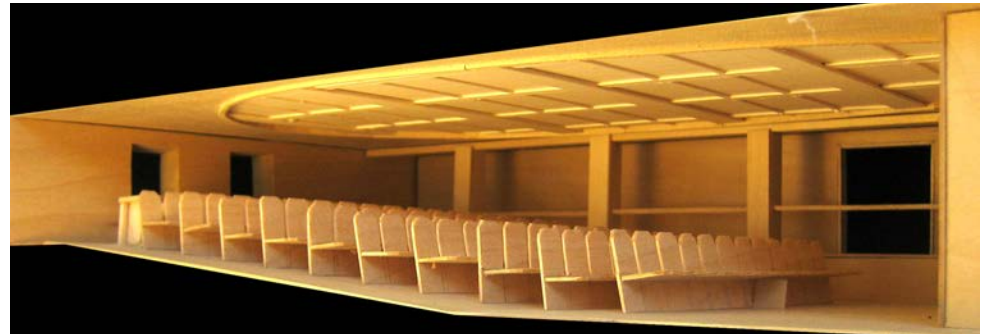
NEW RECONFIGURED TUCKER THEATER - AFTER



NEW RECONFIGURED TUCKER THEATER - AFTER



ORIGINAL TUCKER THEATER - BEFORE



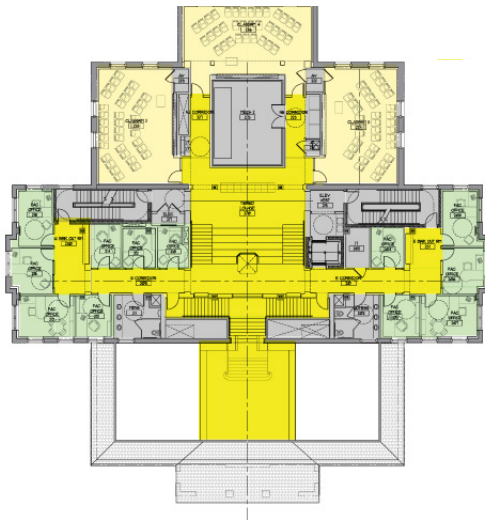
STUDY MODEL OF PROPOSED TUCKER THEATER AND HORSESHOE CEILING



# SECOND FLOOR

## CONNECTIONS & CONGREGATION

Two primary concepts for the design and renovation were to create visual connections between spaces and to allow light into the heart of the building to banish the previous “rabbit warren” atmosphere. Both of these goals were accomplished with the restoration and opening up of the previously closed off cupola as well as the creation of a new Tiered Lounge in the heart of the building on the second floor. The Tiered Lounge is a place of connection and congregation for students to study in, to use for presentations and gatherings, and to allow open continuity between previously disconnected floor levels.

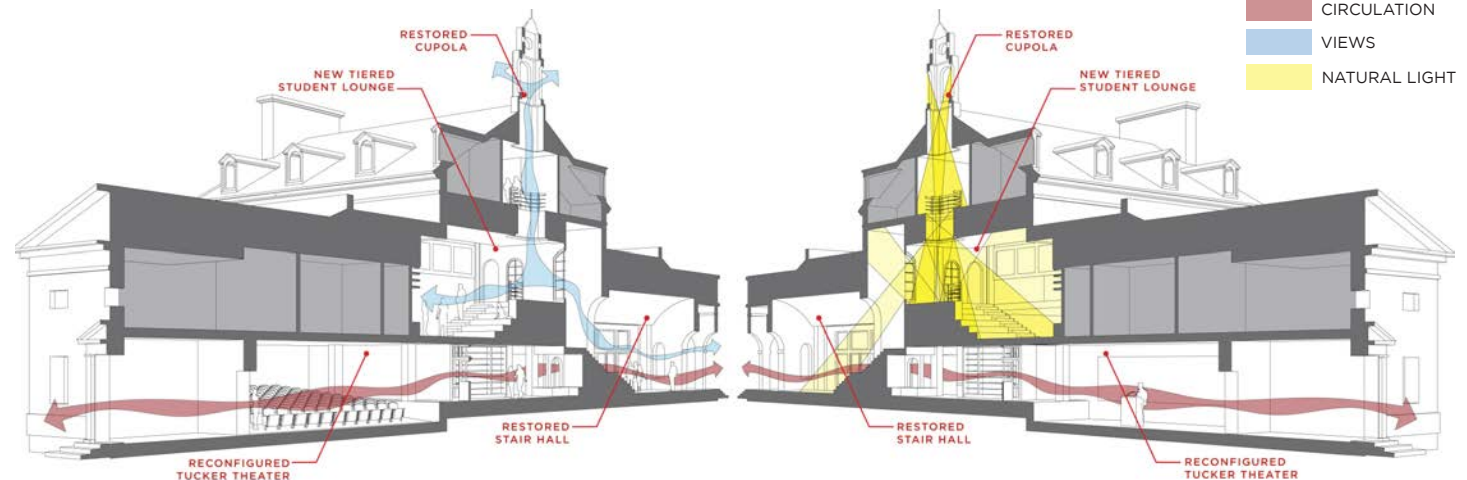


SECOND FLOOR PLAN

- CIRCULATION
- CLASSROOM
- OFFICE / FACULTY
- BLDG SUPPORT



NEW TIERED STUDENT LOUNGE



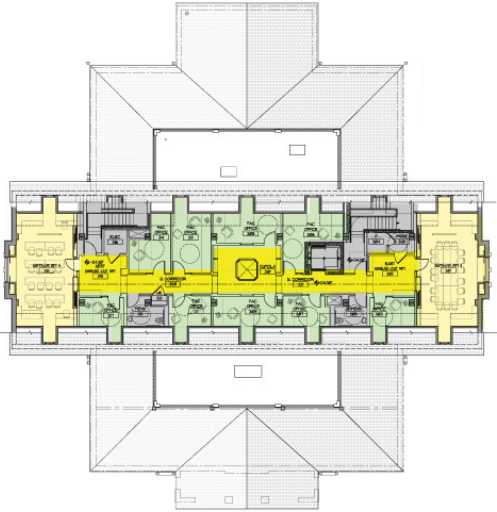
SECTION DIAGRAM SHOWING THE NEW DESIGN'S FOCUS ON LIGHT, VISUAL CONNECTIONS & CLARITY OF CIRCULATION

# THIRD FLOOR

## LIGHT & INTIMATE SPACES

While the Tiered Lounge, Rear Lobby, and Cupola serve as formal and informal areas for students, the design team also recognized the need for places close to the professors' offices to wait, to pick up papers, and to interact with other students and professors. The design team's solution was the creation of new Breakout Spaces at either end of the east - west hall on every floor as seen in the adjacent photo.

The third floor's previous configuration contained only faculty offices, disconnecting the students from many of the professors and a large portion of the building. With the introduction of the cupola opening in the center and the breakout spaces and seminar rooms at either end, students and professors alike are now able to interact and enjoy the intimate scale of the third floor



THIRD FLOOR PLAN

- CIRCULATION
- CLASSROOM / SEMINAR ROOM
- OFFICE / FACULTY
- BLDG SUPPORT



NEW BREAKOUT SPACE FOR STUDENT & PROFESSOR INTERACTION - AFTER



ORIGINAL HALL AND BREAKOUT SPACE - BEFORE



STUDY MODEL OF BREAKOUT SPACE



SEMINAR ROOM - AFTER



# THIRD FLOOR

## DAYLIGHTING & SUSTAINABILITY

The restoration and opening up of the previously obstructed cupola above the third floor not only allows light down into the heart of the building below, but also creates a wonderful pausing place of a more intimate scale at the newly created library. As seen in the photo to the right, this has quickly become a quiet study space favored by students, continuing Tucker Hall's long tradition of use by students not only in the English Department but also the rest of the student body.

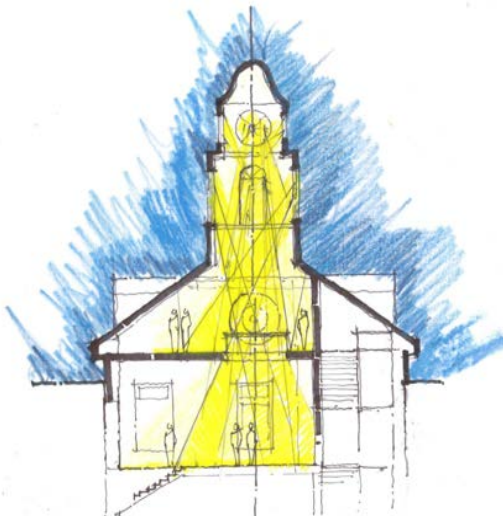
In addition to the cupola restoration strategy of bringing daylight into the heart of the building, several strategies for sustainability were employed in order to create a truly modernized building and achieve LEED Gold.

Daylighting contributed significantly to a reduction of overall energy use in the building. The energy performance and comfort of the building were optimized. Insulation was added to the previously uninsulated exterior masonry walls. The previous 1960's HVAC was completely replaced with a new, extremely efficient system and included occupant controls for classrooms and faculty offices. The team also designed a sustainable site through preserving the tree canopy, minimizing paving, managing storm water, and including drought tolerant plantings.

Materials used in the renovation were also considered for their recycled content, regional source, and low or no VOC content. Material waste was also minimized through over 95% construction waste recycled. Perhaps the most sustainable component of the project was the reuse of the existing building and its structure thus greatly reducing the project's environmental footprint.



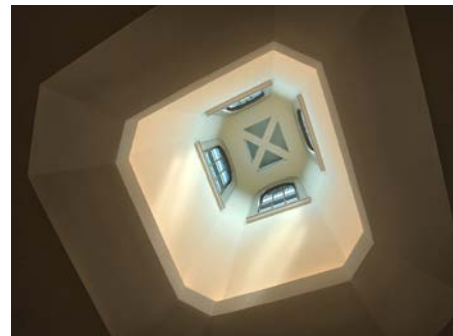
NEW LIBRARY AND STUDY AREA AT RESTORED CUPOLA - AFTER



HAND SKETCH SHOWING IMPORTANCE OF RESTORING THE CUPOLA TO BRING LIGHT INTO THE ENTIRE BUILDING



ORIGINAL OBSTRUCTED CUPOLA ABOVE CEILING OF THIRD FLOOR - BEFORE



RESTORED AND OPENED CUPOLA AS VIEWED FROM THIRD FLOOR - AFTER



VIEW OF RESTORED CUPOLA FROM TIERED LOUNGE AT SECOND FLOOR BELOW - AFTER



