

John and Jill Ker Conway Residence

Washington, DC

Military veterans are among the most vulnerable segment of the homeless population. In addition to a lack of basic shelter and employment opportunities, veterans often have a myriad of physical and mental health conditions. Operating on the belief that homelessness is a preventable circumstance, an unprecedented collaboration among public, private, philanthropic, and nonprofit partners has resulted in the John and Jill Ker Conway Residence - a concrete step forward in the fight to end homelessness among veterans in the District of Columbia.

The 14-story structure comprises a total of 124 units, with 60 permanent supportive housing units for formerly homeless veterans, 17 units for tenants referred by the District of Columbia's Department of Behavioral Health, and 47 units for other low-income residents at or below 60% area median income. Units are small efficiency rentals with sleeping alcoves, and kitchens open to the living/dining areas, which maximizes the density of the overall development on a small, constrained site. Programmed to house management offices, a lounge, fitness center, conference space, and ground floor retail, the Ker Conway Residence also provides on-site support services to address the social, medical, and emotional needs of its residents.

The extensive use of glazing throughout maximizes natural light in units and in common corridors, enlivening interior spaces and connecting residents to the larger urban context. Developed to meet Enterprise Green Communities standards, the Ker Conway Residence combines sustainable building materials with thoughtful design strategies.

The largest permanent supportive housing development in the District dedicated to serving veterans transitioning from homelessness, the Ker Conway Residence is located in the rapidly developing NoMa neighborhood in downtown Washington, DC.





West Facade



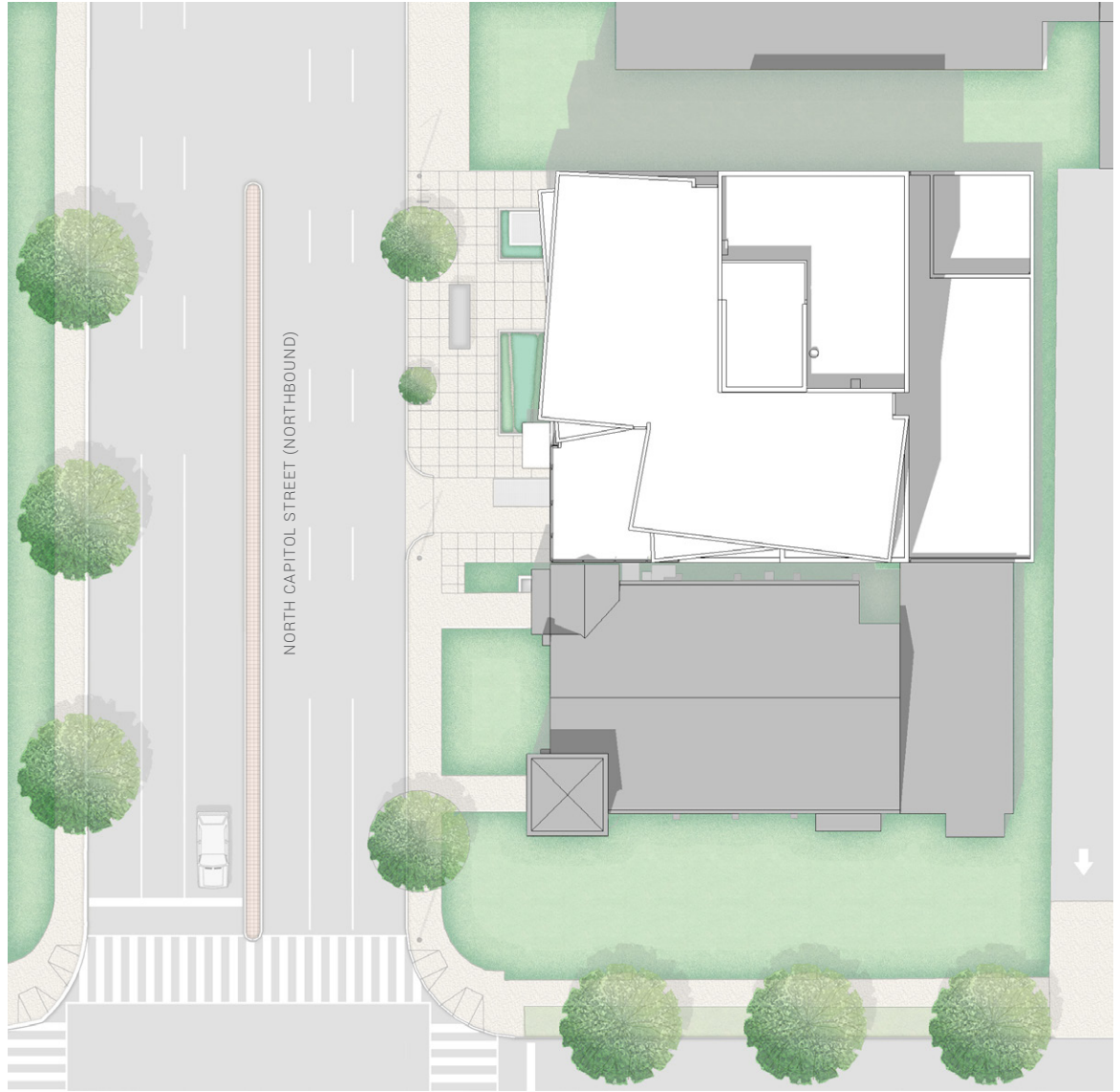
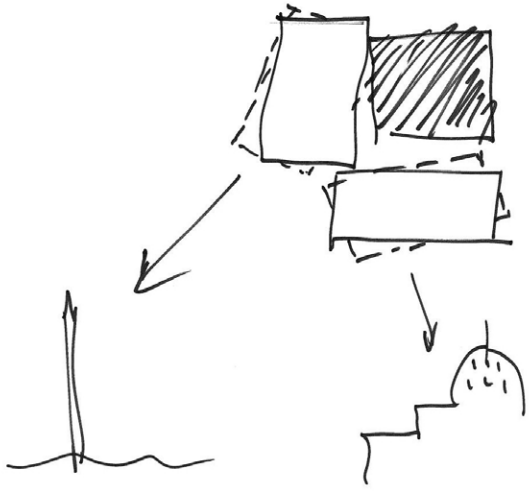
Lobby Interior



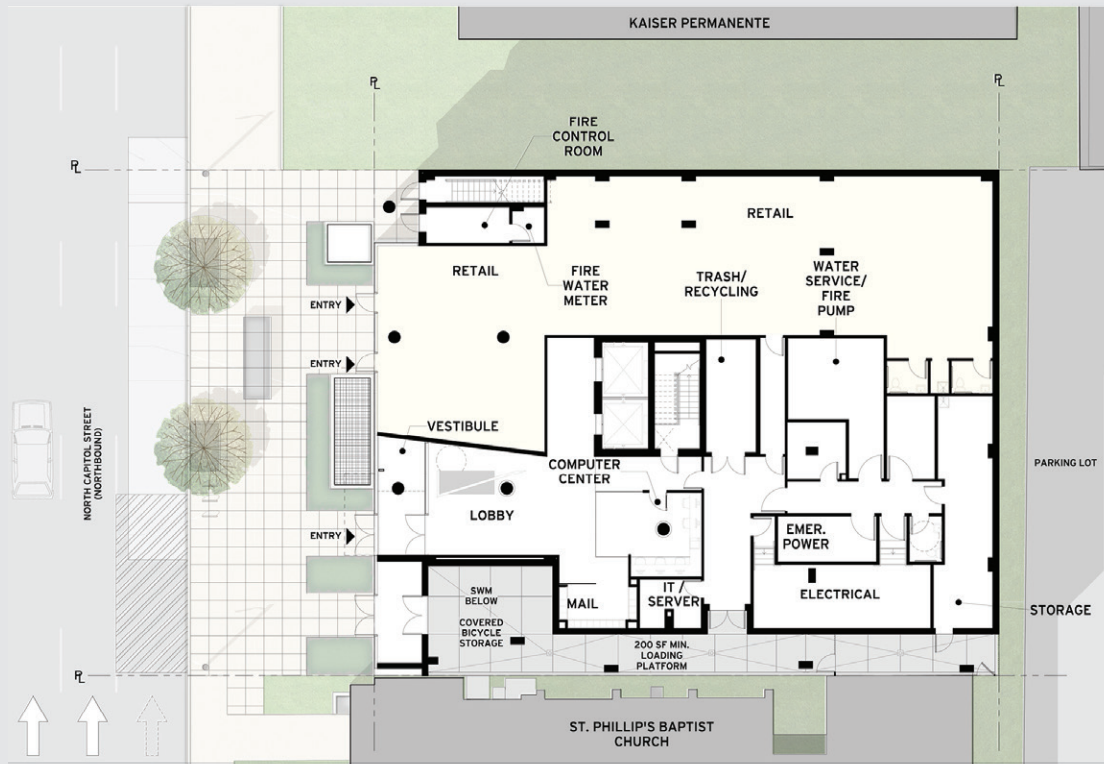
Multipurpose Room



Unit Interior



Site Plan



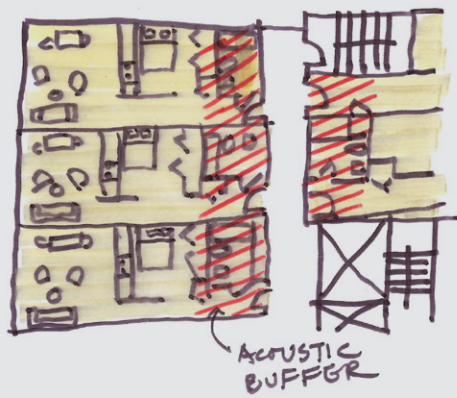
Ground Floor Plan



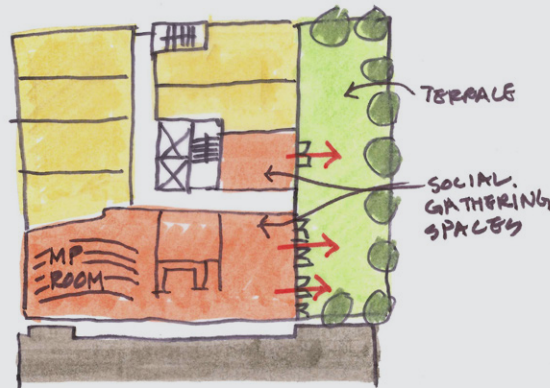
Second Floor Plan



Third Floor Plan



ACOUSTIC BUFFER



TERRACE

SOCIAL GATHERING SPACES

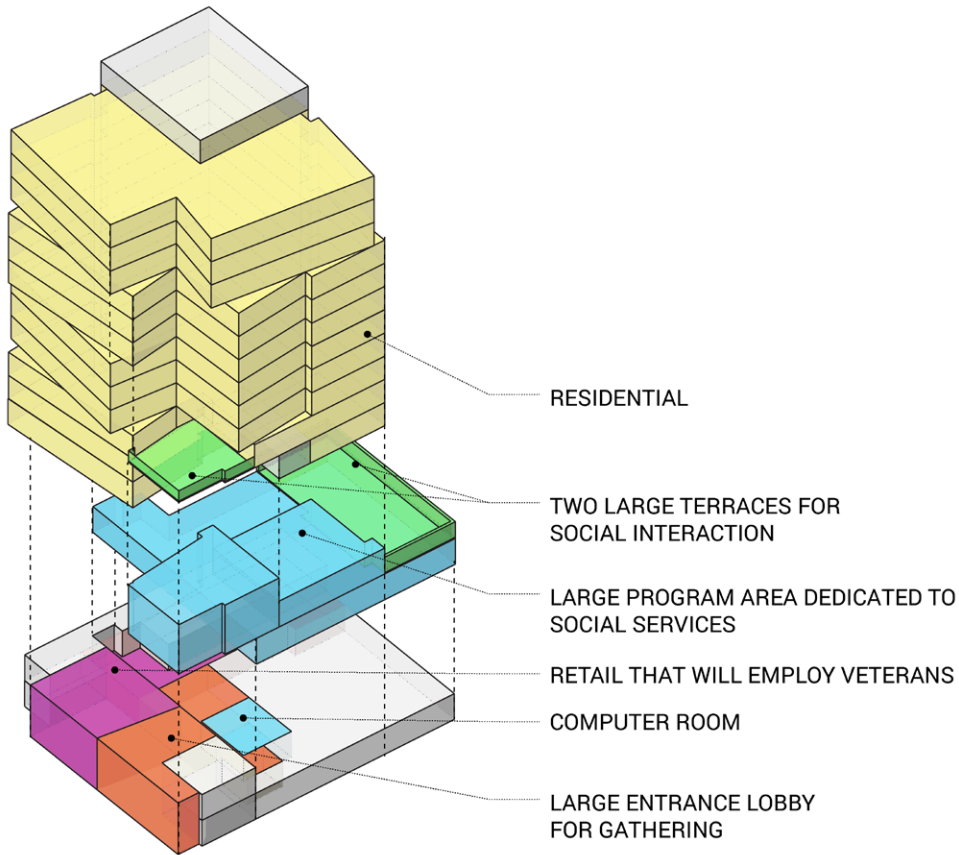
3RD FLOOR



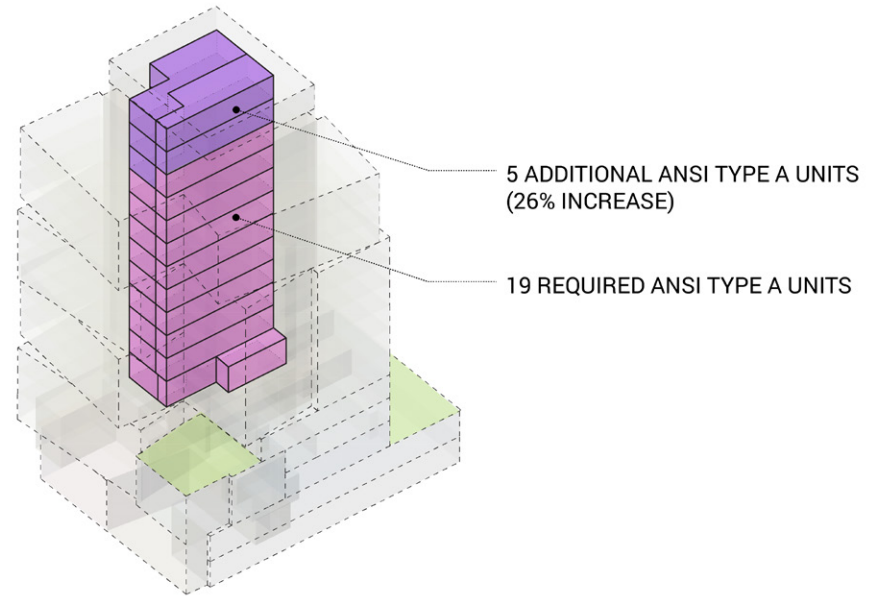
Fifth Floor Plan

TRUE & PLAN NORTH

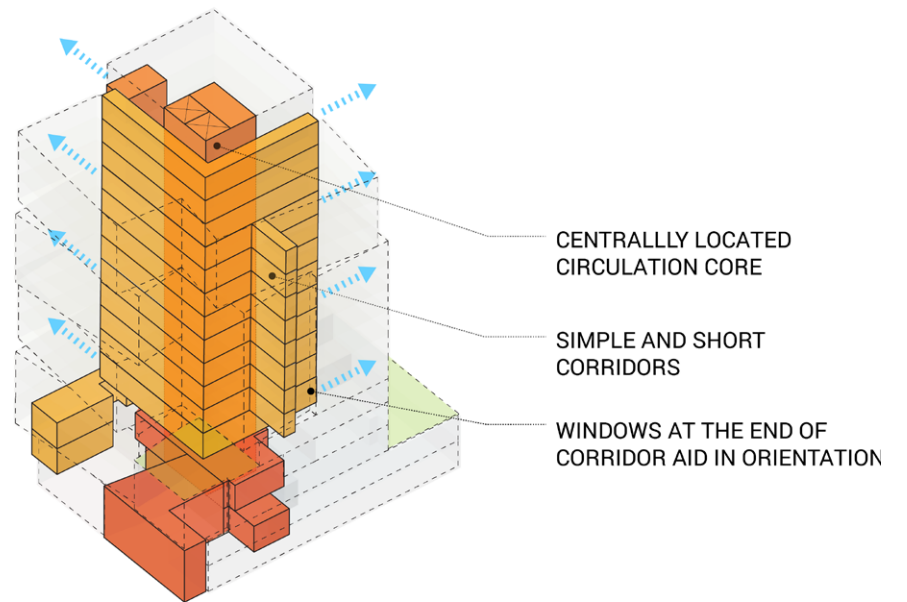




Veterans Services



Exceeding Accessibility Requirements



Efficient Planning/Stacking



A WARM WELCOME HOME TO OUR VETERANS

Michelle Obama greets the first formerly homeless veterans to move into the Conway Residence.

