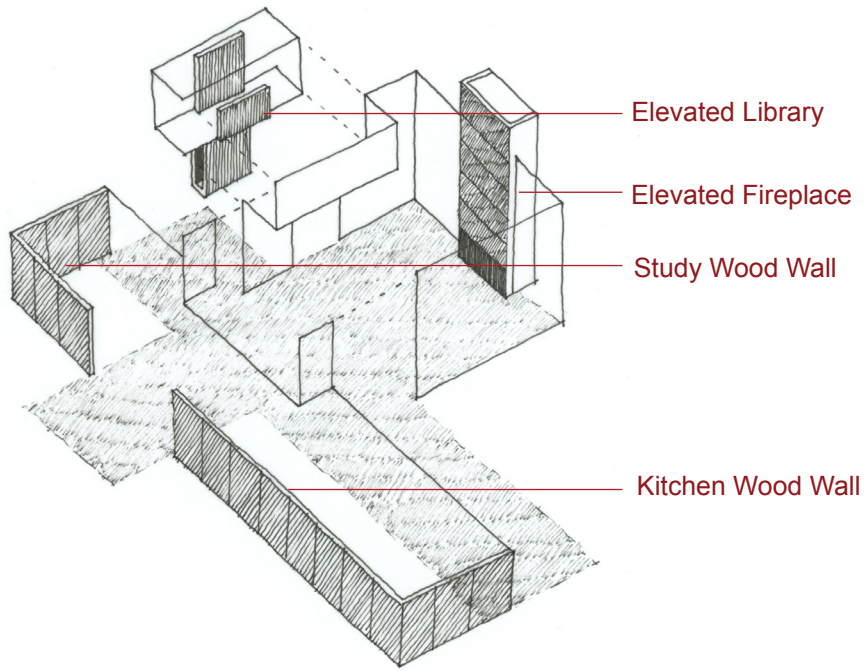


# SMOKY QUARTZ

RESIDENTIAL ARCHITECTURE - RENOVATION

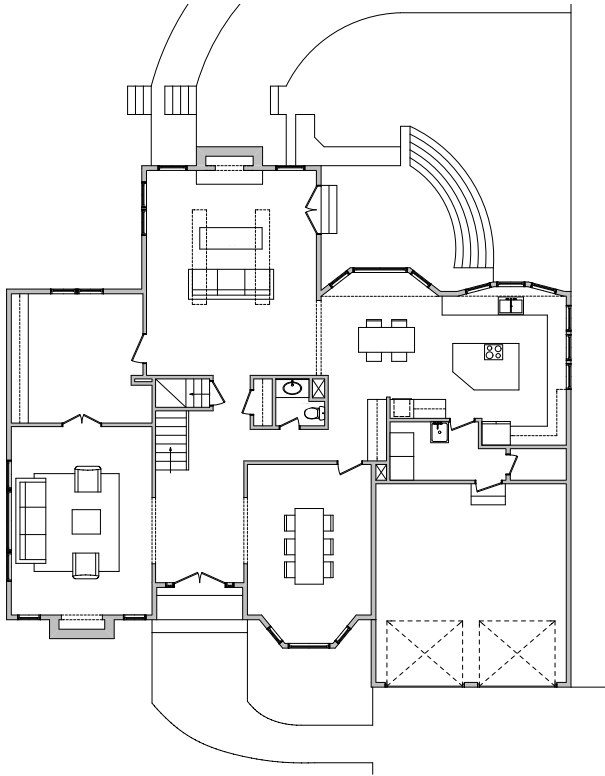


The goal for this existing suburban home was to “break open the box” to allow views of the surrounding wooded landscape. Dividing walls were removed in order to create large interconnected spaces. The kitchen and study which flank the family room, were opened to each other creating a visual axis. The entry offers an alternate view directly through the space to the trees beyond. The rear roof was raised in order to maximize views and light with large picture windows. Custom stained ash panels unify the various areas of the home. The family room’s vertical Macassar Ebony library unit and viroc clad chimney add warmth and texture to the double height space, and serve as anchors to the composition. The exterior received a face lift which included new cladding (viroc and Hardie panel) and windows.

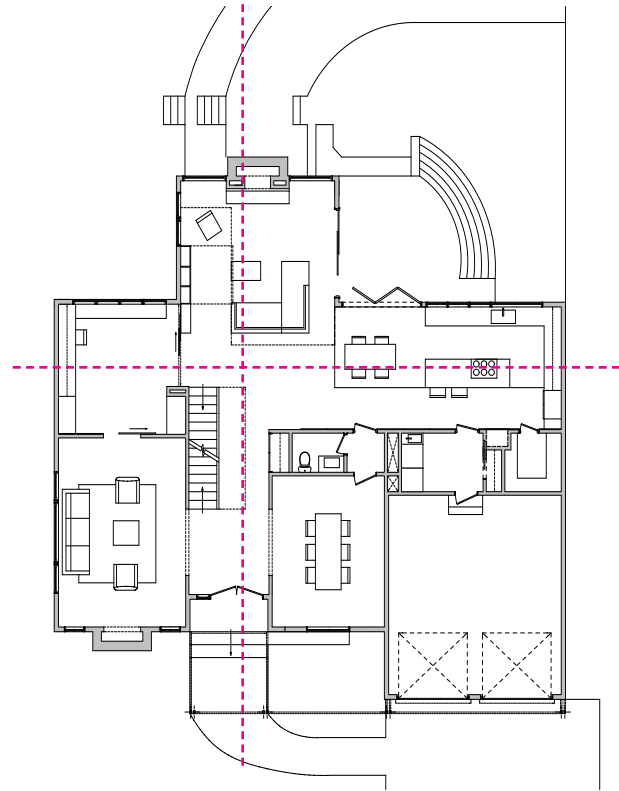


Family Room Before

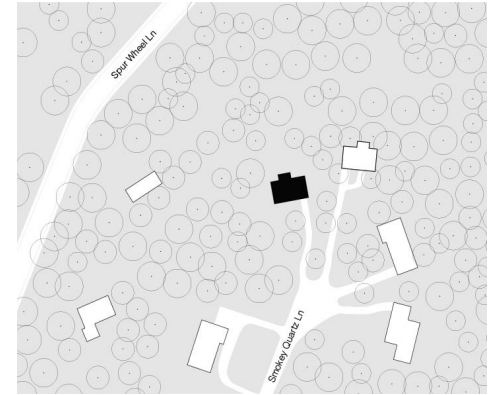




Main Floor Plan Before



Main Floor Plan After



Site Plan



Rear Elevation Before



Rear Elevation After



Elevated Library Storage





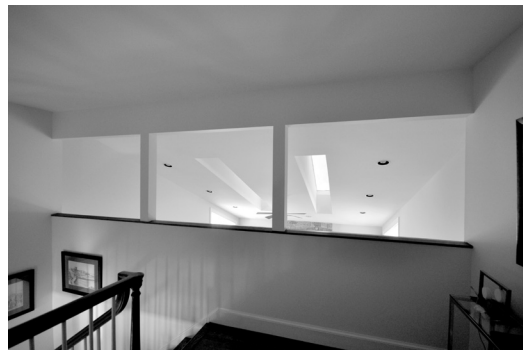


Kitchen Before





Stairs Before



Second Floor Loft Before







