

Abu Dhabi National Oil Company Headquarters

Abu Dhabi, United Arab Emirates



The headquarters of the Abu Dhabi National Oil Company (ADNOC) represents this state-owned institution as a pillar of the economy in the UAE. Contrasting with the many twisting, turning “shape” buildings in Abu Dhabi, ADNOC’s elegant, minimalist design stands out—expressing stability, strength and seriousness of purpose. Its elegantly silhouette embodies a “less is more” modernist philosophy while introducing a bold landmark to the city skyline.

The exterior frame of the 75-story tower is clad in granite to convey a sense of permanence. The sides rise to an architrave free of the building mass, creating the image of a monumental arch rising next to the Arabian Gulf.

To provide the ideal solar orientation, we designed the headquarters in the shape of a parallelogram. The tower’s north side, facing the waterfront, is fully glazed to offer views and take advantage of the limited direct sunlight. Columns are located 20 feet from the northern perimeter, allowing the structure to be cantilevered from this side and creating unencumbered interior space. The south side, where sunlight is stronger, incorporates a double wall of insulated, fritted glass and sun shades. Cladding the east and west sides in granite screens the 65-story glass core from harsh sunlight.

The building’s orientation and highly efficient mechanical systems are designed to consume 24 percent less energy than the baseline standard set by ASHRAE 90.1-2004. While High-efficiency fixtures and reuse of graywater and HVAC condensate reduce potable water use by 40 percent compared to a conventional design. More than 1,000 gallons of graywater per month are harvested and recycled for flushing toilets and watering plants. These strategies, combined with the highly efficient building systems, will help achieve LEED Gold certification. The design is a pilot project for the Pearl Building Rating System, which is Abu Dhabi’s green building initiative.

PROJECT CATEGORY

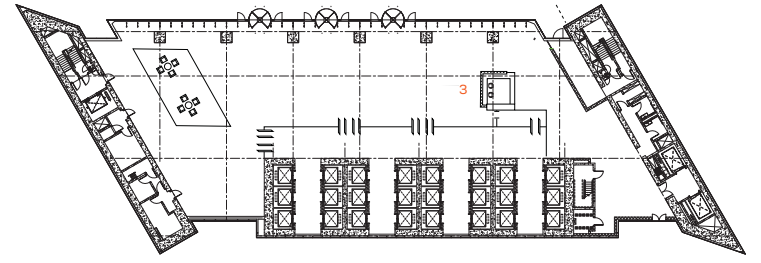
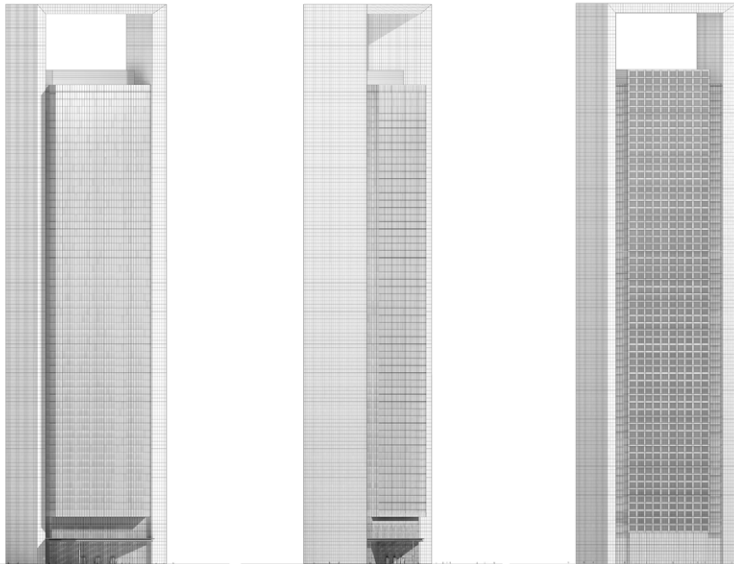
Commercial Architecture

SIZE

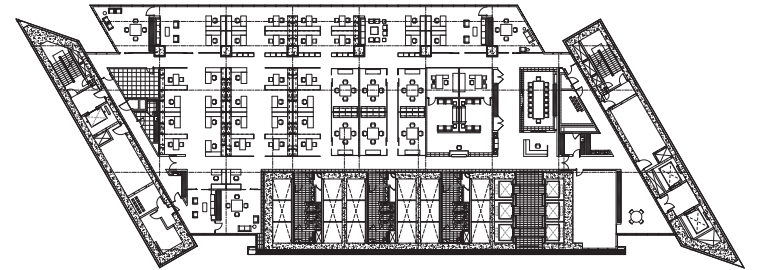
1,865,385 SF / 173,300 SM

COMPLETION

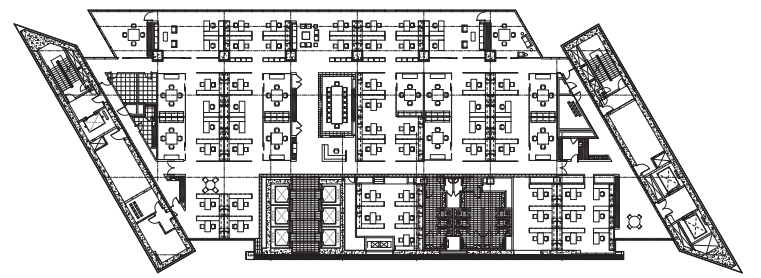
2016



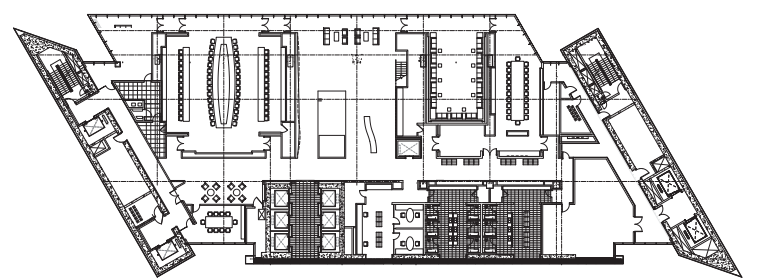
GROUND LEVEL



LOW LEVEL



HIGH LEVEL



EXECUTIVE LEVEL



- 1 Tower
- 2 Existing Mosque
- 3 Phase 2 Podium
- 4 Phase 2 Auditorium Building

SITE PLAN



The classic shape serves as a recognizable focal point for people traveling to and from the city.





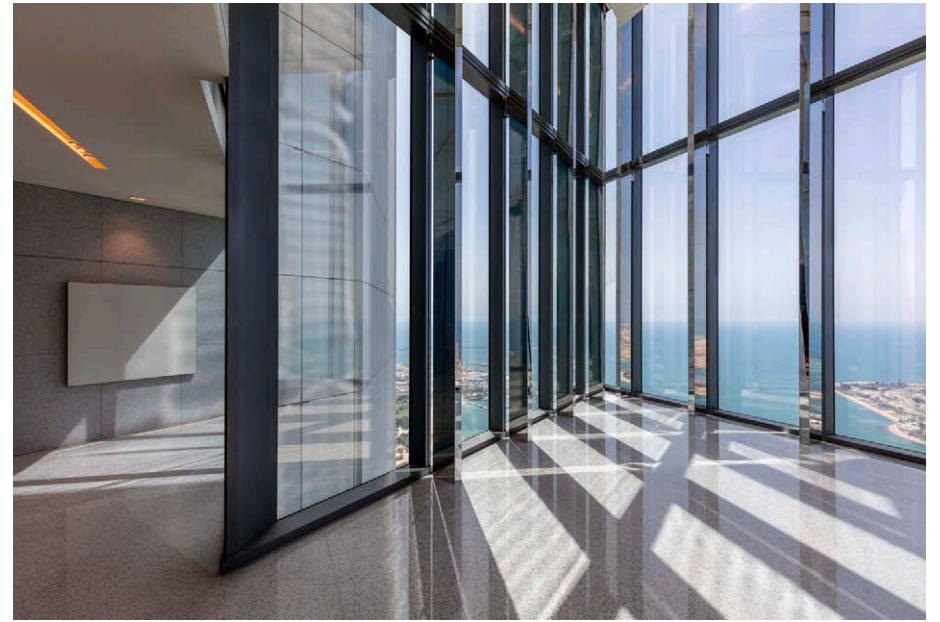
BUILDING ENTRANCE



The large, stainless steel canopy repeats the triangular and parallelogram shapes of the building in its pattern of aluminum louvers.



ENTRANCE LOBBY



EXECUTIVE FLOOR



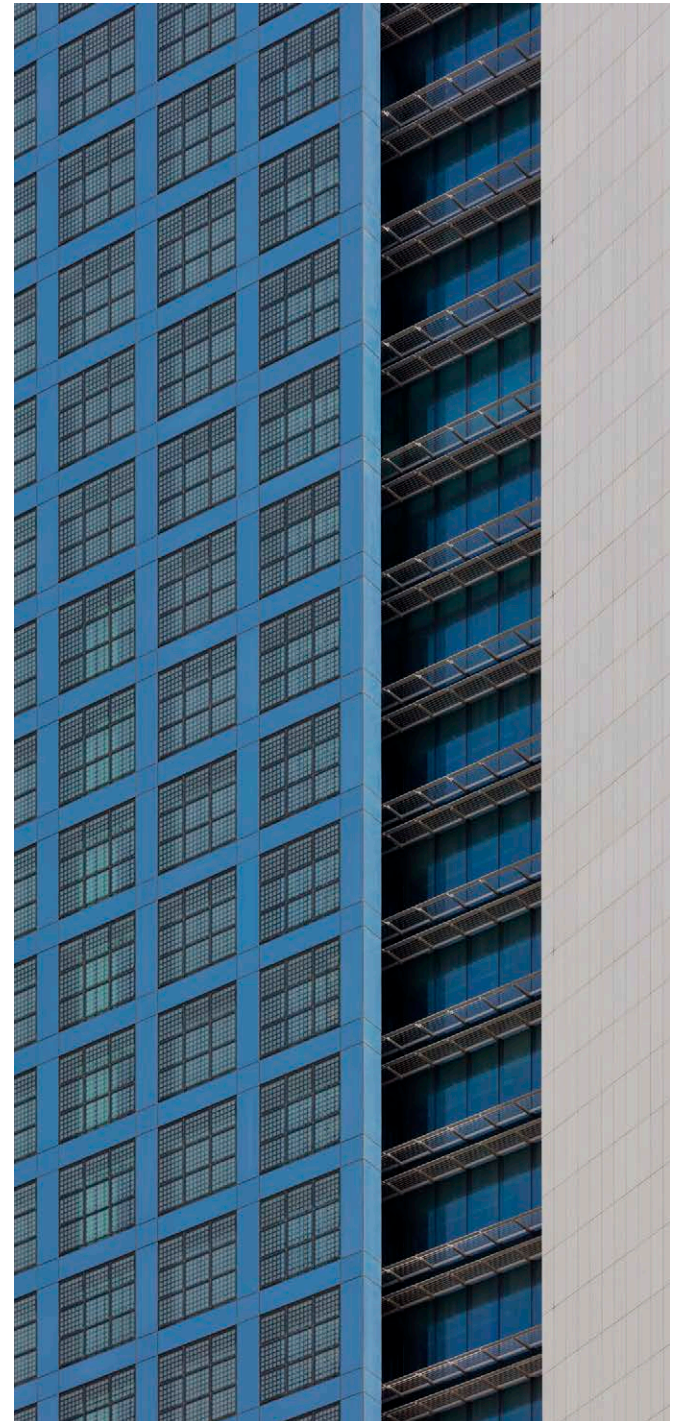
ENTRANCE CANOPY



VIEW FROM THE EMIRATES PALACE



CONTEXT VIEW



FACADE DETAIL



The elegant, minimalist design stands out from the twisting, turning “shape” buildings in Abu Dhabi.





AERIAL VIEW