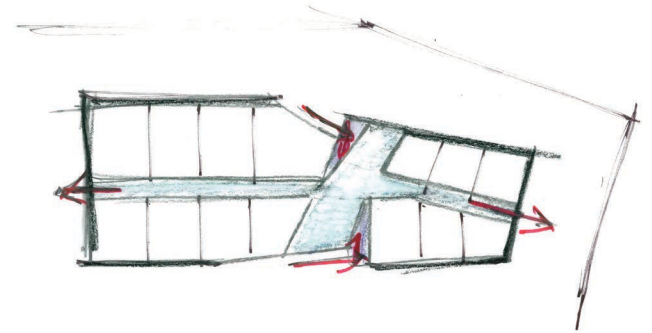




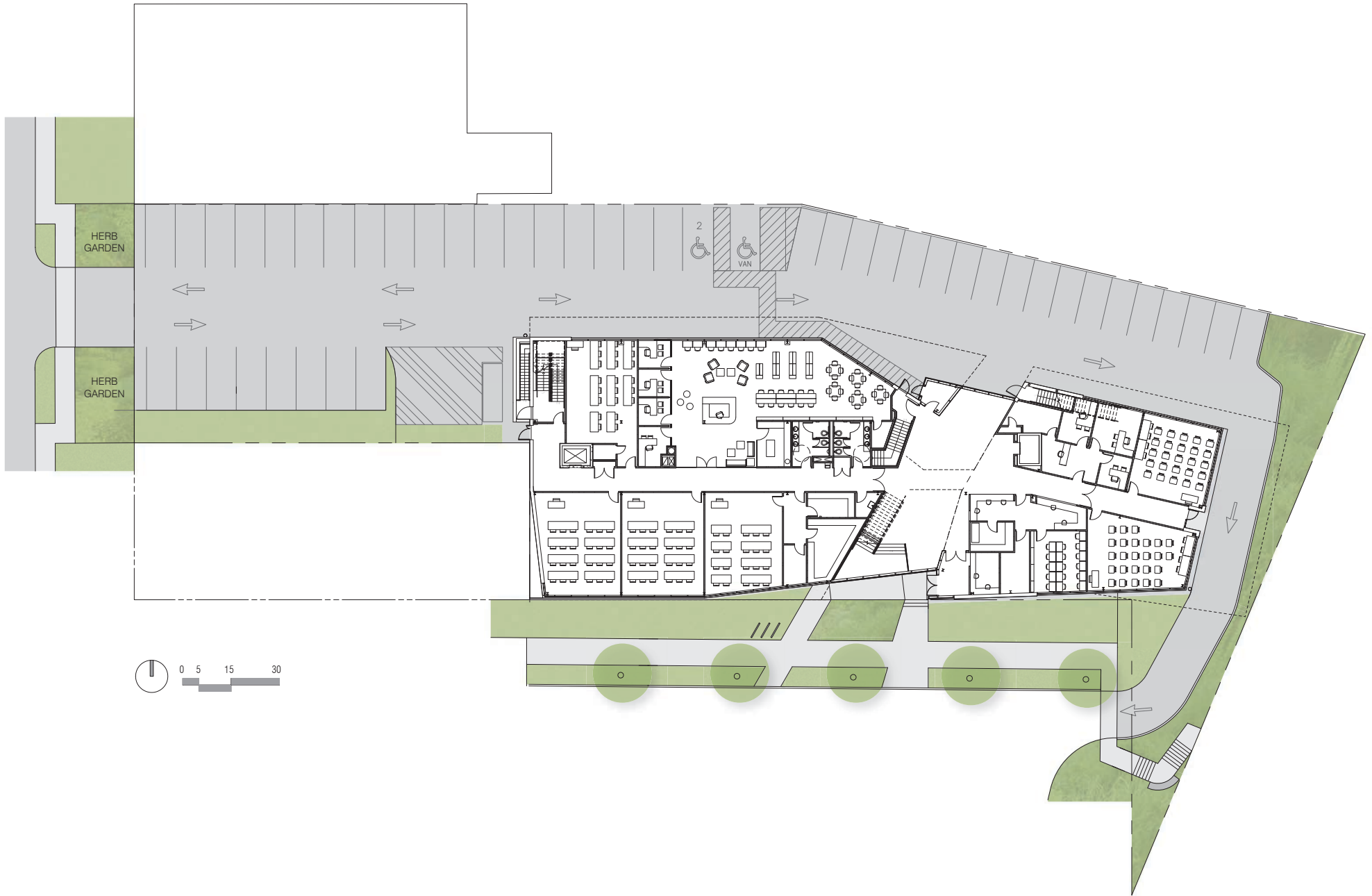
VIEW FROM NORTHEAST



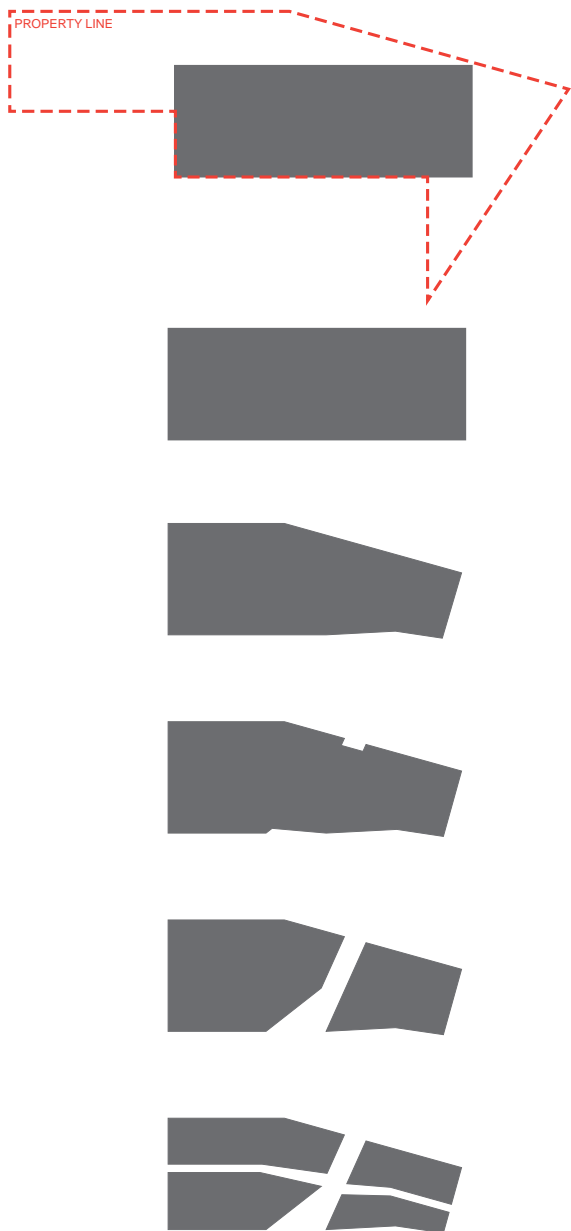
CARLOS ROSARIO INT'L SCHOOL
SONIA GUTIERREZ CAMPUS
Institutional Architecture
Washington | DC

Project consists of three (3) stories above grade and partial basement. Building program includes main common atrium space, resource center, office space, English and computer classrooms, four (4) culinary labs/training kitchens, nursing aid training lab, cafeteria, and outdoor terrace. The students served are college-age.

Challenges included working with multiple tenants, compiling program and building planning to accommodate individual requirements and specifications. The unique building design responds to the clients' needs and program, as well as the irregular site and urban constraints.



SITE PLAN



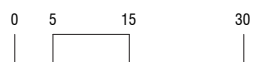
VIEW FROM SOUTH SIDE



NORTH ELEVATION

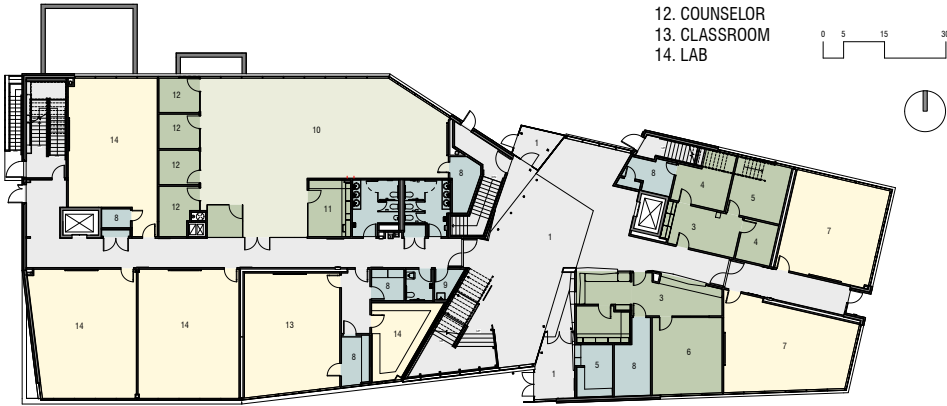


SOUTH ELEVATION



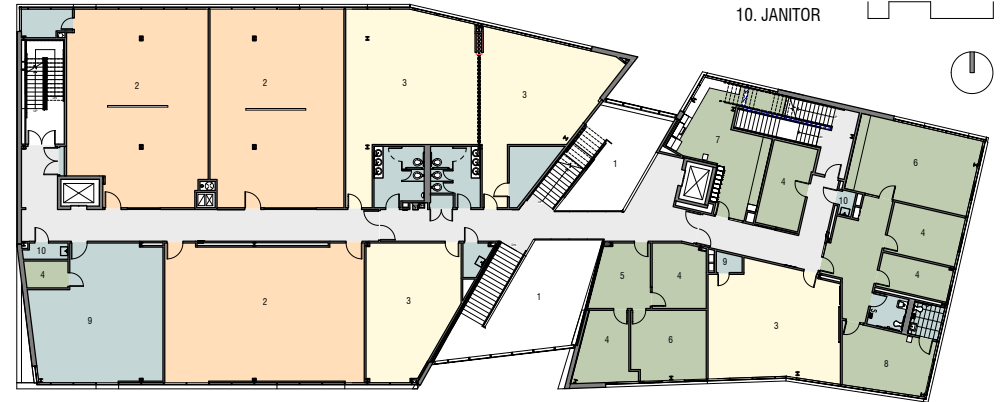
ELEVATIONS

1. ENTRANCE
2. LOBBY
3. RECEPTION
4. OFFICE
5. PRINCIPAL
5. SECURITY
6. ASSESSMENT
7. ENGLISH
8. STORAGE
9. JANITOR
10. RESOURCE CENTER
11. LIBRARIAN
12. COUNSELOR
13. CLASSROOM
14. LAB



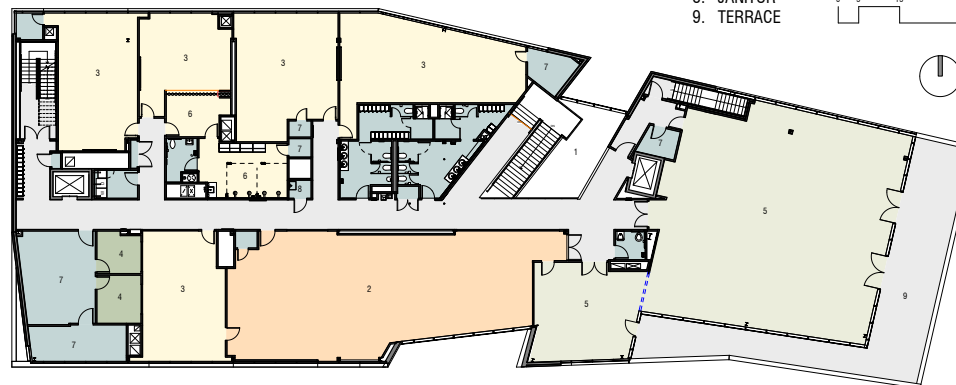
FIRST FLOOR PLAN

1. ATRIUM OPEN TO BELOW
2. CULINARY LAB
3. CLASSROOM
4. OFFICE
5. RECEPTION
6. MEETING ROOM
7. STAFF LOUNGE
8. DIRECTOR
9. STORAGE
10. JANITOR



SECOND FLOOR PLAN

1. ATRIUM OPEN TO BELOW
2. CARLOS ROSARIO KITCHEN
3. CLASSROOM
4. OFFICE
5. CAFETERIA
6. NURSE AID TRAINING LAB
7. STORAGE
8. JANITOR
9. TERRACE

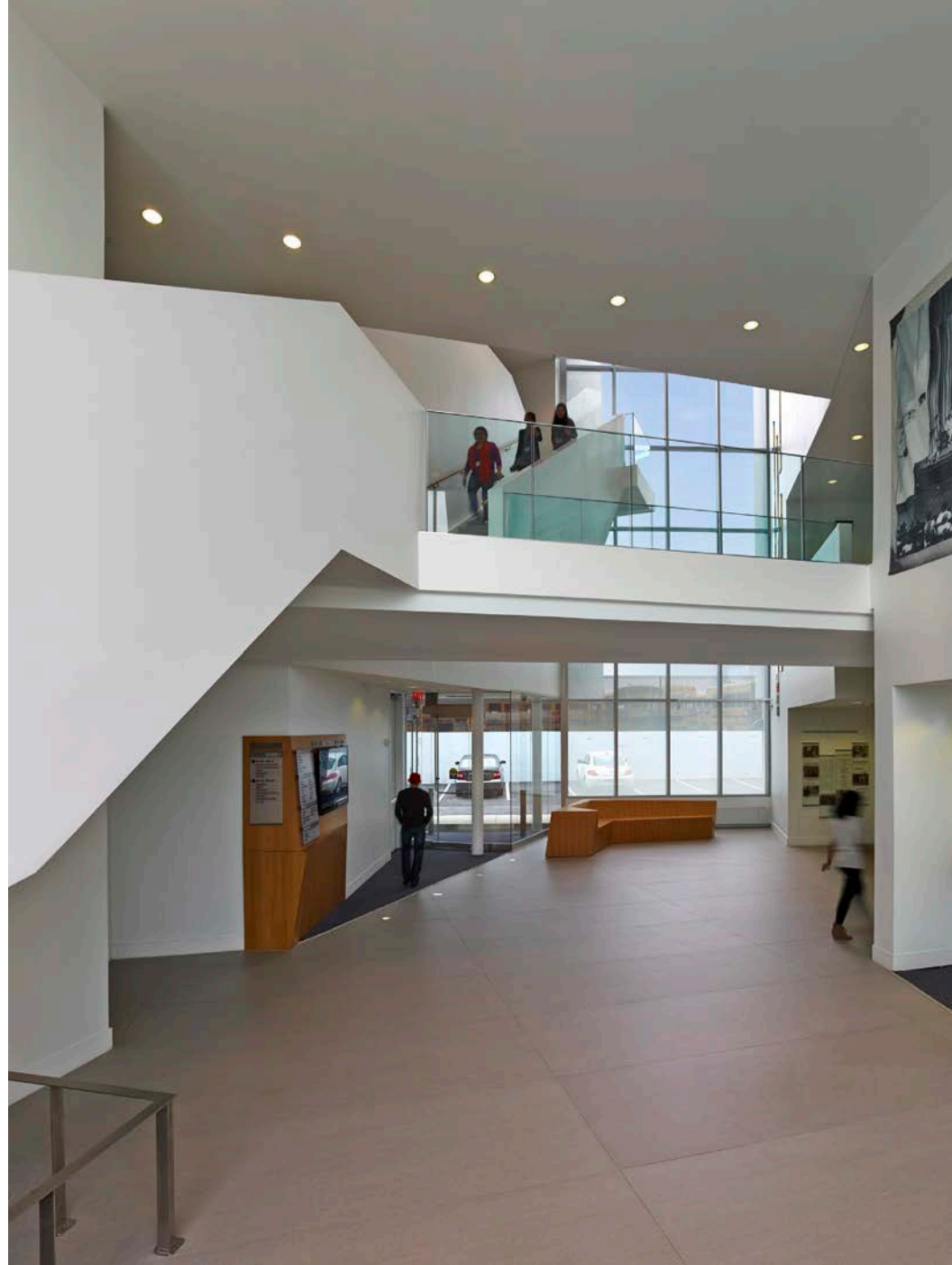
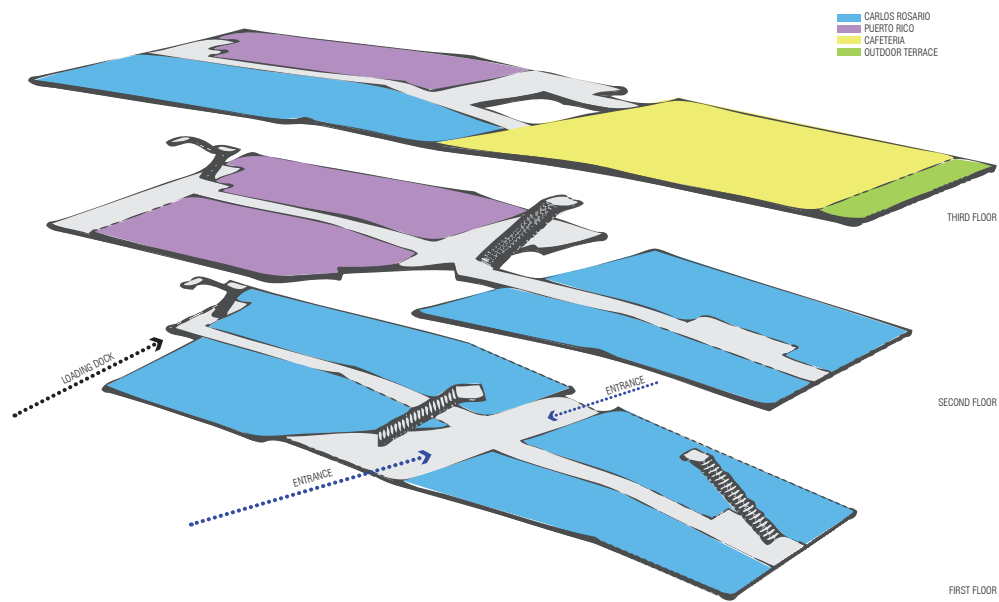


THIRD FLOOR PLAN

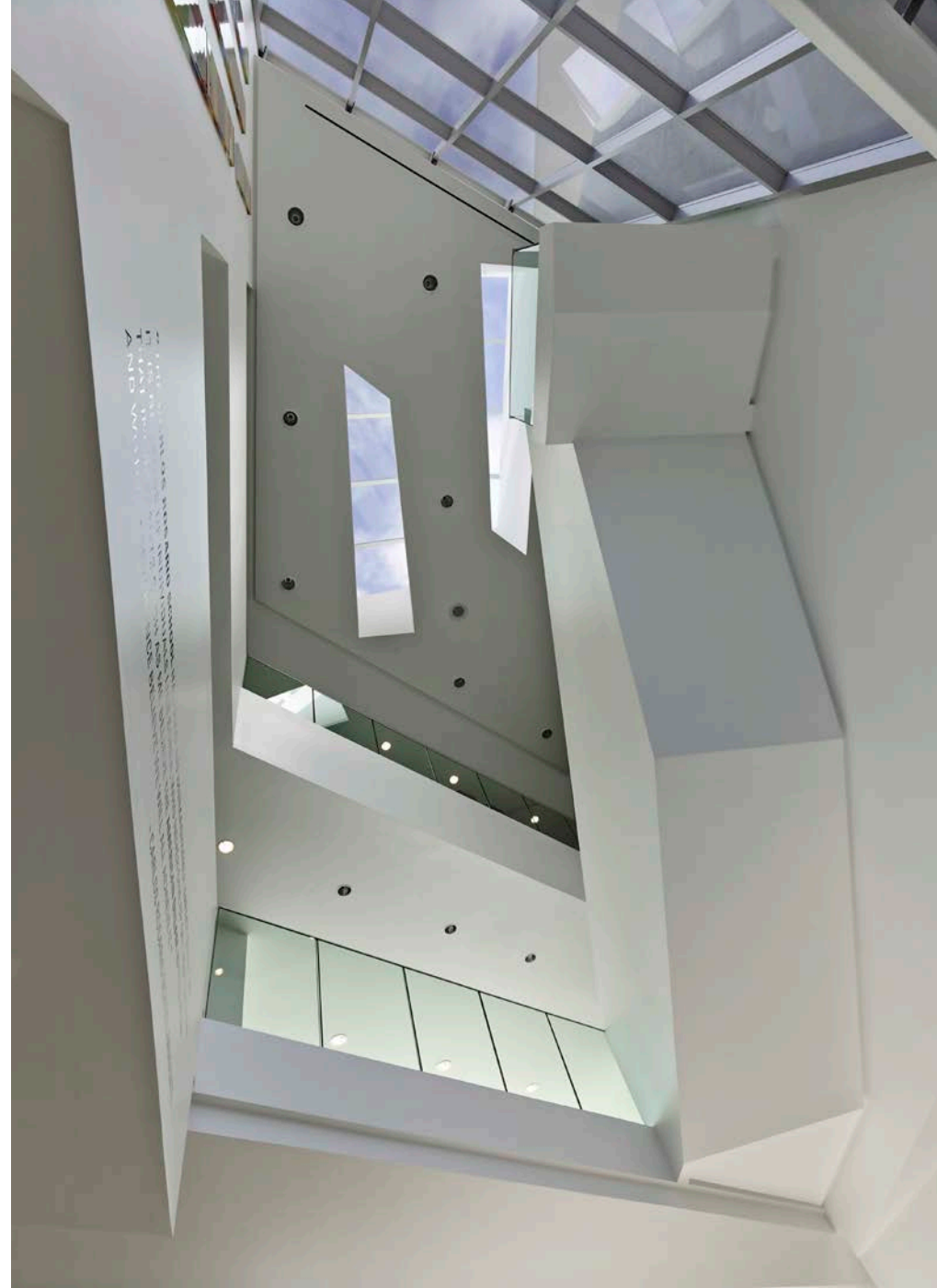
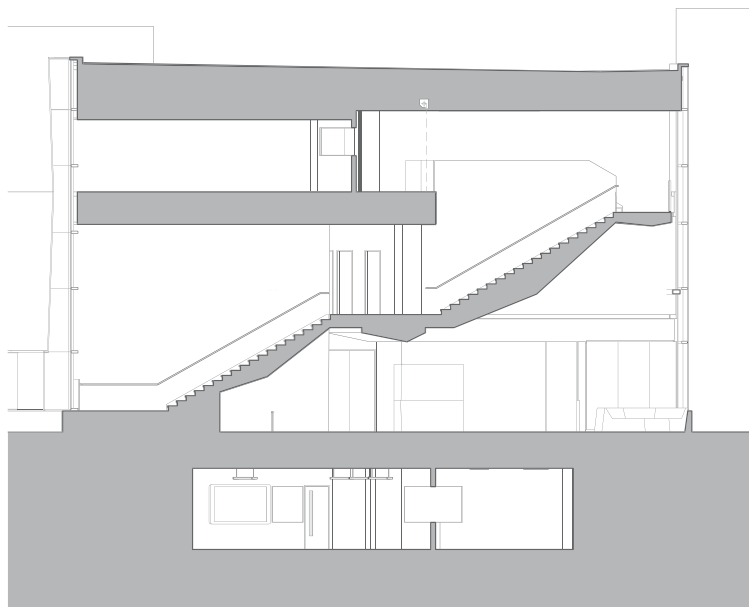
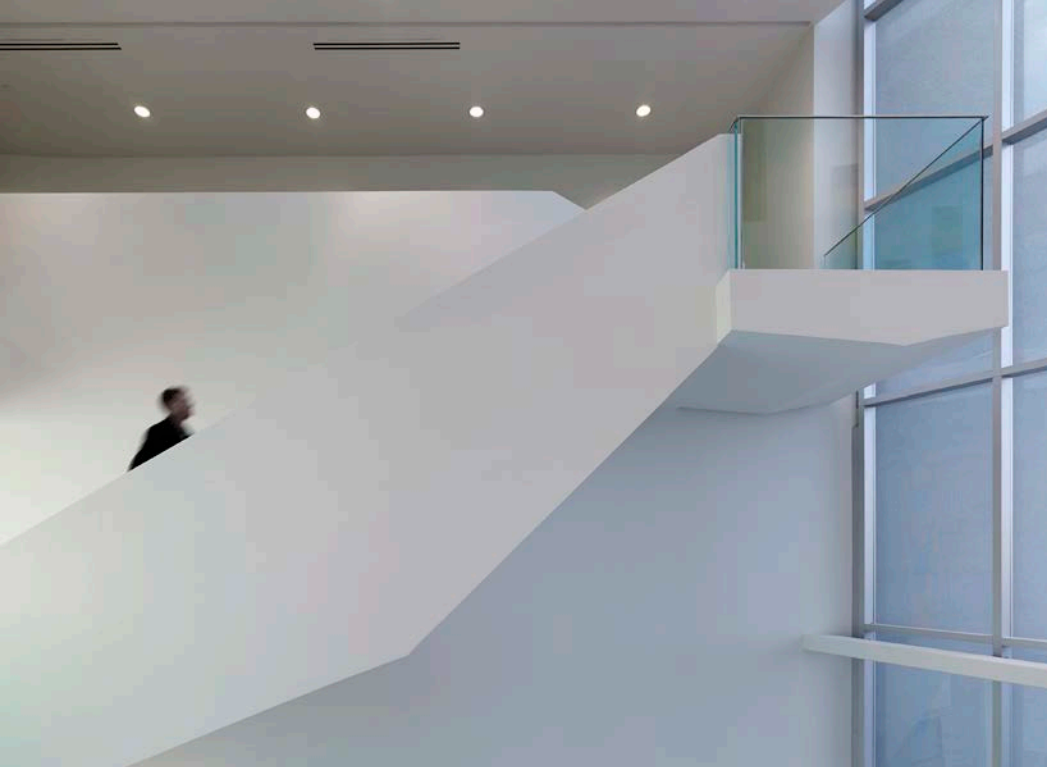
FLOOR PLANS



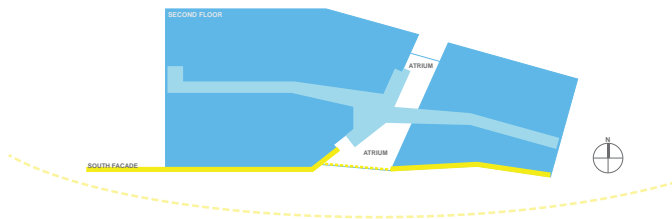
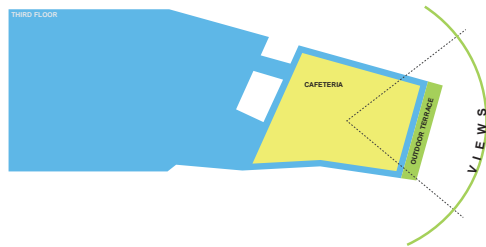
ATRIUM



AXO/ ATRIUM



ATRIUM



VIEWS/ CAFETERIA/ BALCONY



VIEW FROM SOUTH SIDE