

## TreeHouse Shed Bethesda, Maryland Small Projects

TreeHouse Shed is an element of a masterplan for a single family property. The masterplan addresses the stewardship of stormwater, the creation of habitat for indigenous species, and the addition of an accessory building for the main house. Our overall strategy preserved the site topography and the existing trees, thereby contributing to the preservation of the forested neighborhood landscape and history.

Built without a garage, and without an amenity such as a walk-out basement, the main house (TreeHouse) lacked the means for practical storage of maintenance equipment and other items. The homeowner desired a freestanding shed that would accommodate equipment such as garden hoses, tools, a wheelbarrow, and bicycles. TreeHouse shed would address these needs.

For Treehouse Shed, the zoning restrictions on the site were strict; combined with the topography and trees to be protected, the Shed would have to be placed in what seemed like the front yard. Tucked into a hillside, with an open corner facing a small terrace and stepped hillside, Treehouse Shed complements the main house and shapes an entry space to it. Combined with a landscaping plan and terraced steps to the front door and rear hillside porch, the Shed is a welcoming pavilion in the landscape.

# TreeHouse Shed





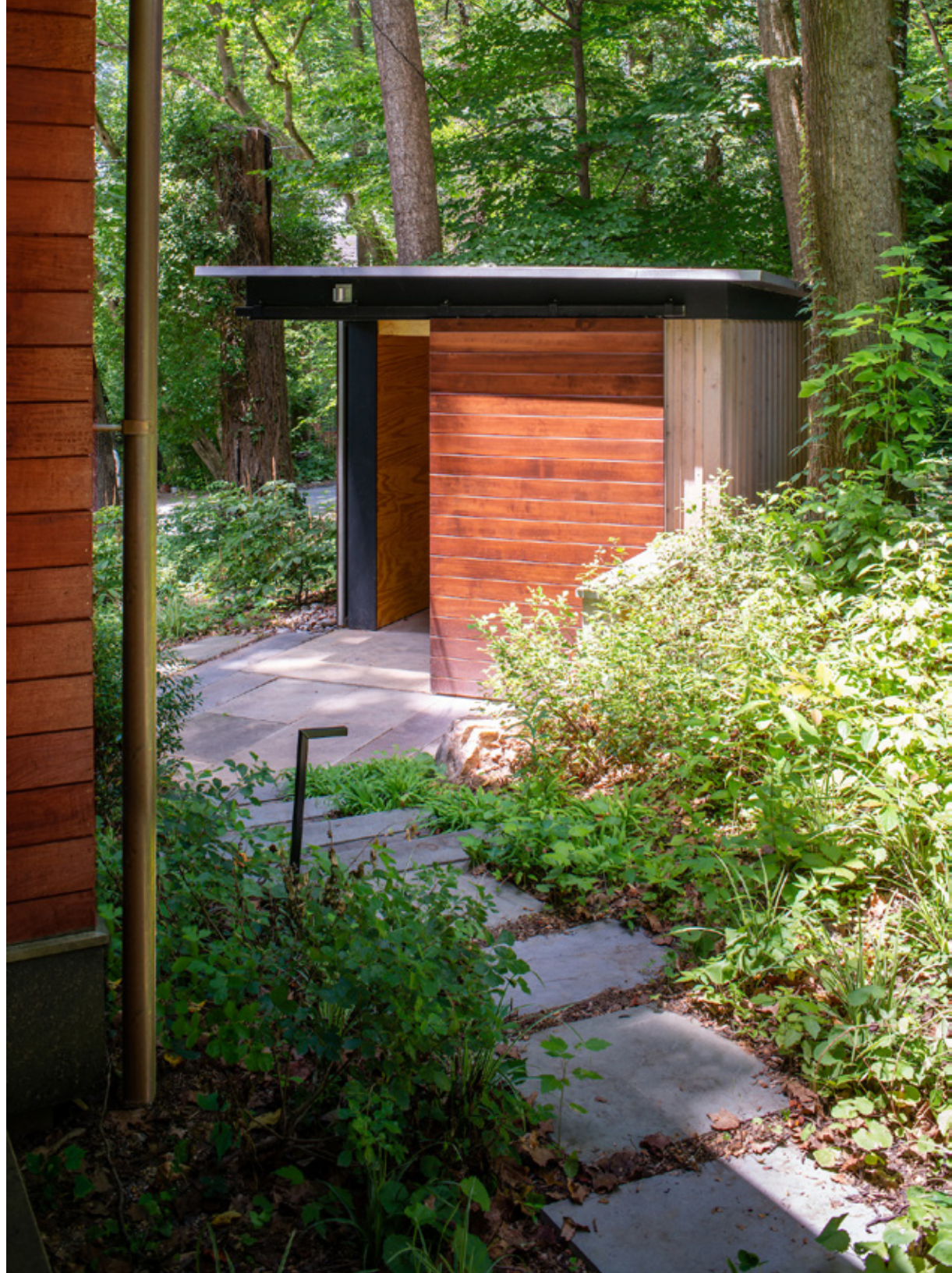


location plan

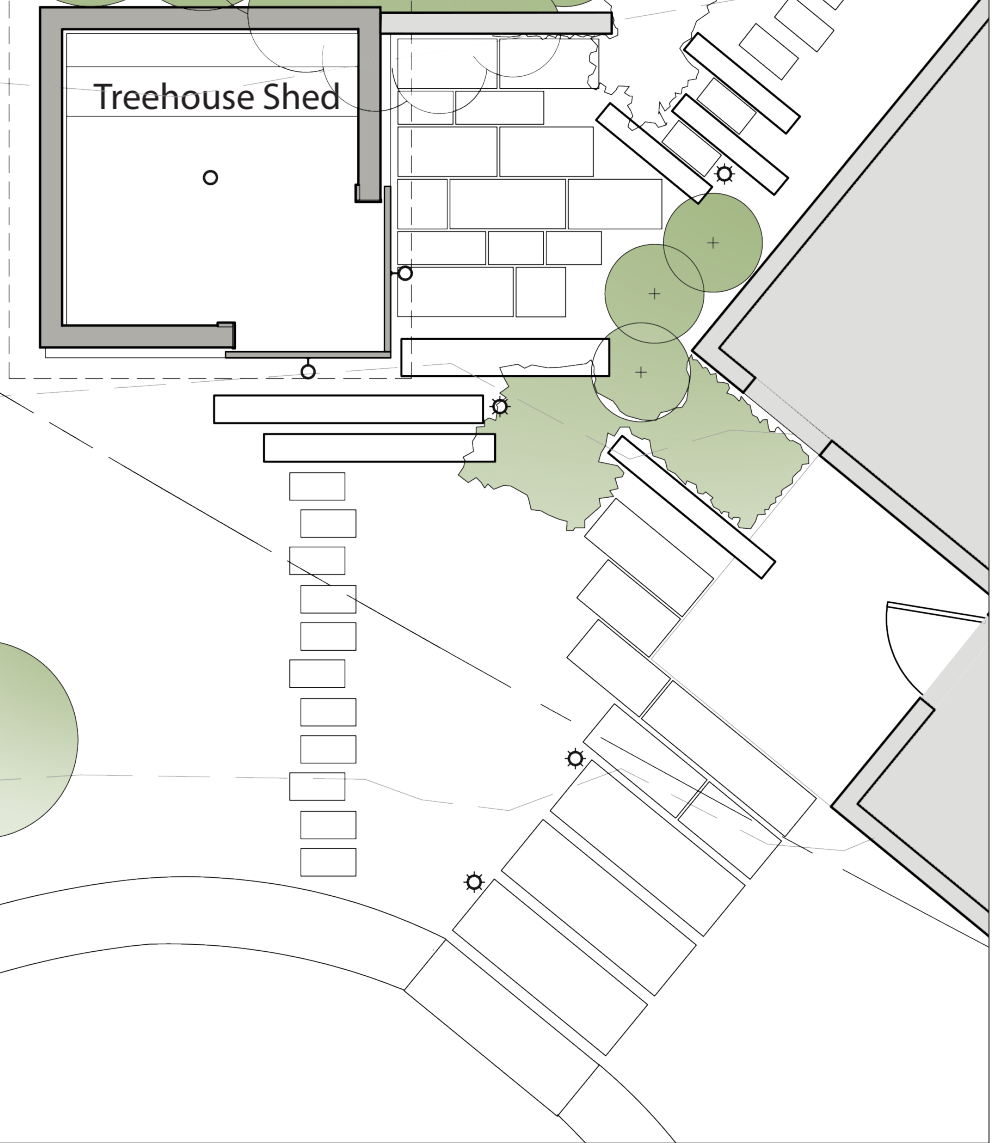
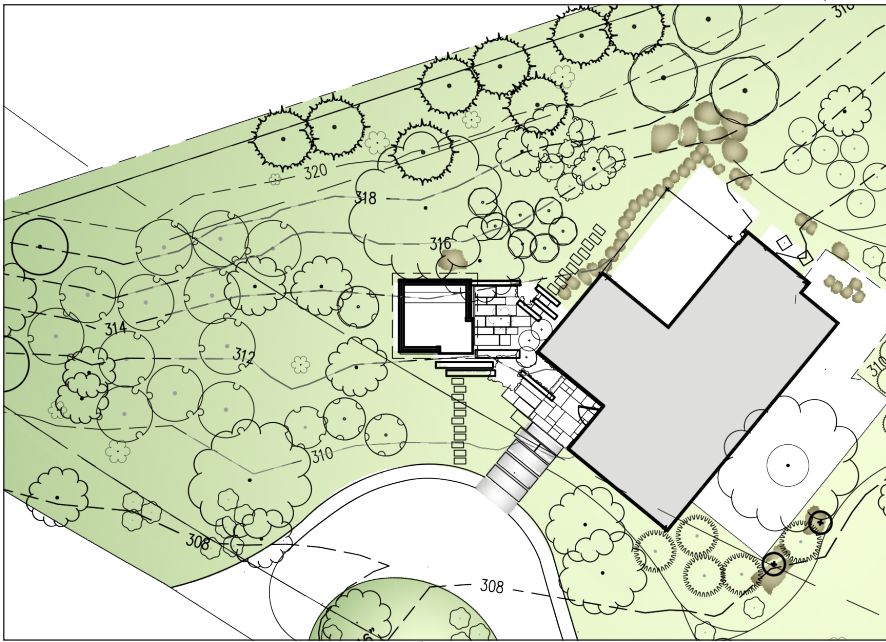


context

# TreeHouse Shed







Positioned within a severely constrained zoning envelope, and located so as to maintain existing trees and existing slope, Treehouse Shed complements the main house and shapes an entry space to it. Combined with a landscaping plan and terraced steps to the front door and hillside porch, the Shed is a welcoming pavilion in the landscape.





6434















