



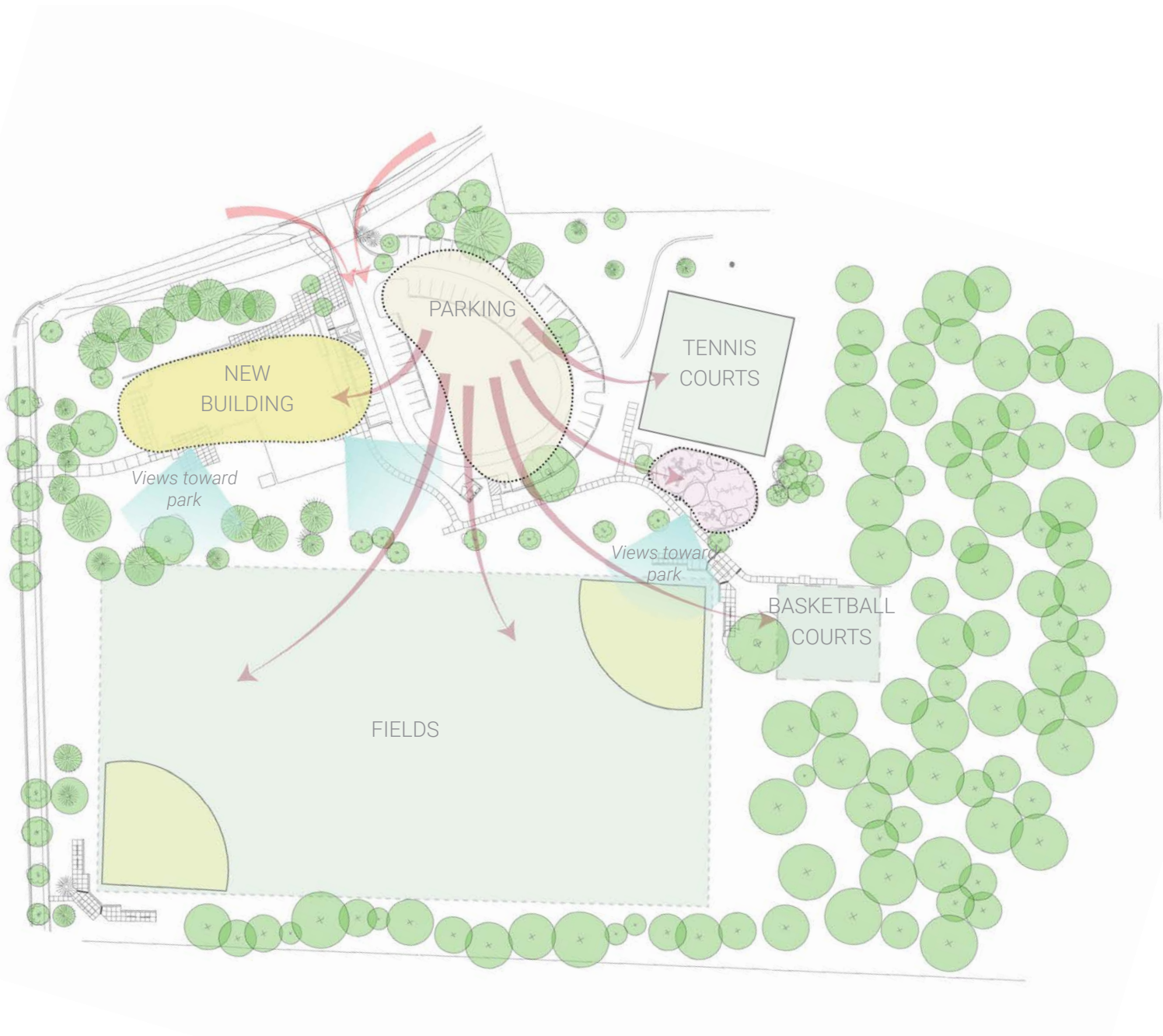
# **Good Hope Neighborhood Recreation Center**

Silver Spring, MD  
**Institutional Architecture**

## **CELEBRATING COMMUNITY**

The Good Hope Neighborhood Recreation Center is a new community recreational facility located within Good Hope Regional Park in Silver Spring, MD. Replacing the previous facility, the new Center serves the local community with a wide range of activities including recreational sports, children's play, athletics, and enrichment classes for youth and adults. In partnership with the Strathmore Center, the facility also accommodates and serves as a performing arts venue. The design of the 13,000 GSF state of the art facility, implements a sustainable site plan with the building on the site's most prominent corner.





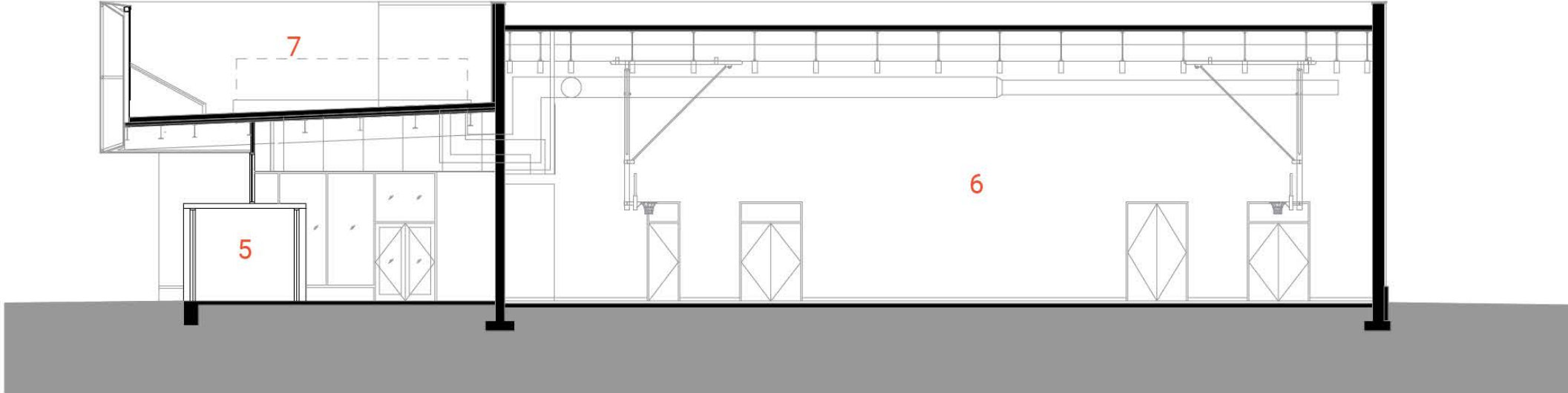
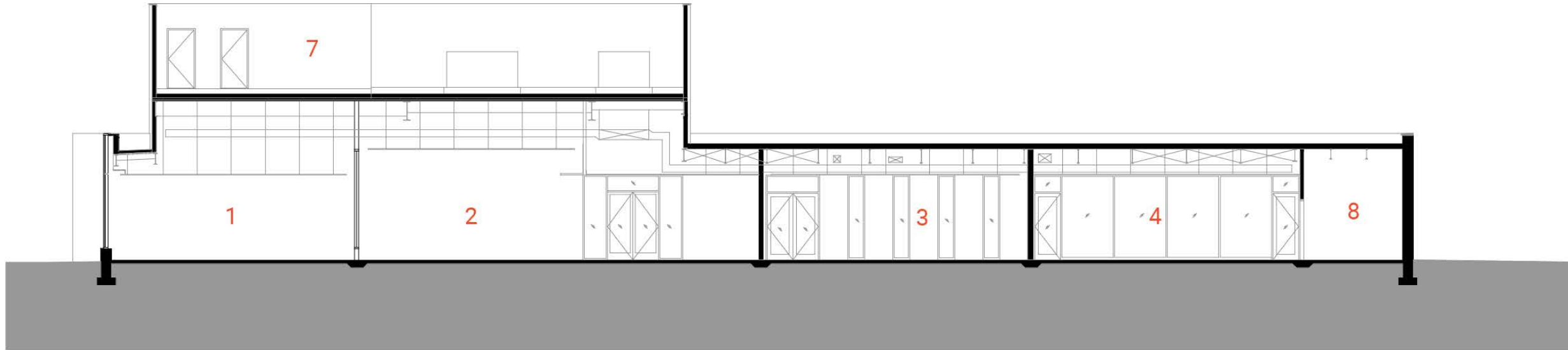
SITE DIAGRAM



SITE PLAN

The form of the building along Good Hope Road strengthens community connections and dramatically improves equal access to the Center's amenities. As an ambassador of sensitive, sustainable design, the project celebrates the unique environmental habitat of the Upper Paint Branch Special Protection Area of Montgomery County.

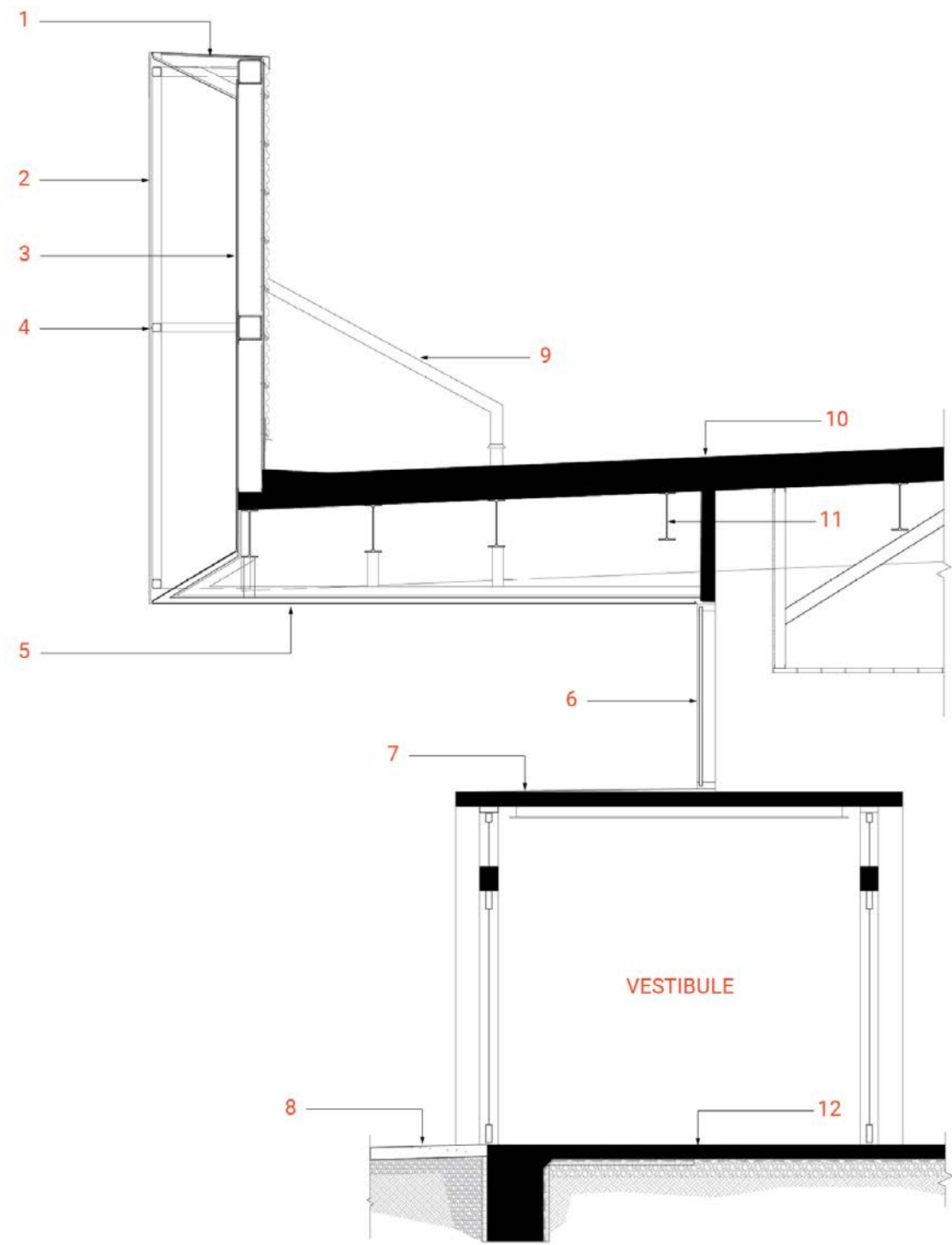




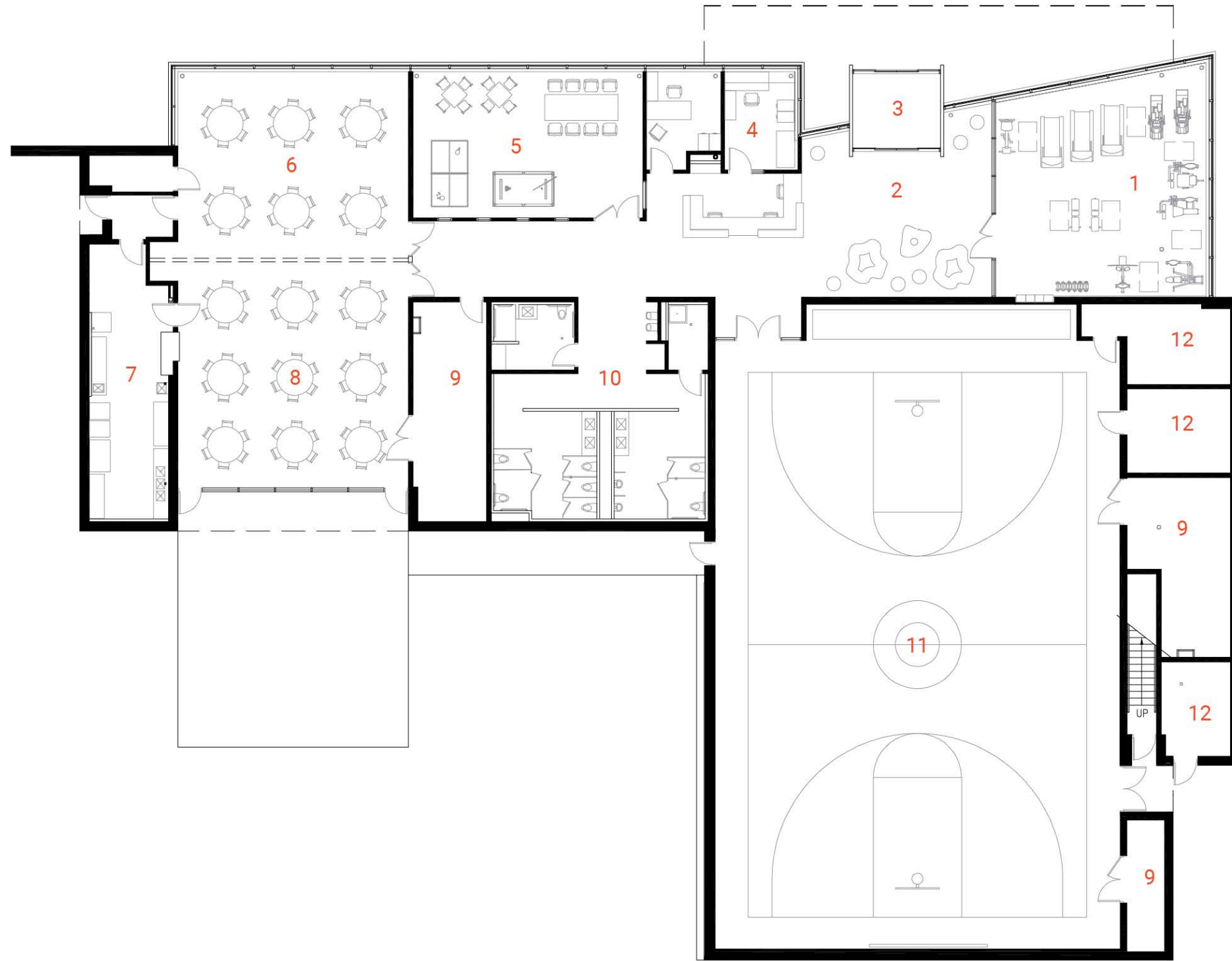
- |   |           |   |           |   |                 |   |         |
|---|-----------|---|-----------|---|-----------------|---|---------|
| 1 | Fitness   | 2 | Lobby     | 3 | Games           | 4 | Social  |
| 5 | Vestibule | 6 | Gymnasium | 7 | Mechanical Yard | 8 | Storage |



MAIN ENTRANCE



- |   |  |    |                         |
|---|--|----|-------------------------|
| 1 | Prefinished Metal Coping                               | 7  | Aluminum Plate Cladding |
| 2 | Perforated Metal Panels Secured to Steel HSS Frame     | 8  | Sidewalk                |
| 3 | Plate Panel Cladding on Sheathing on Metal Stud Infill | 9  | Metal Kicker            |
| 4 | Open Joint Between Panels                              | 10 | Membrane Roofing System |
| 5 | Metal Soffit Panel                                     | 11 | Steel Beam              |
| 6 | Insulated Curtainwall System                           | 12 | Walk Off Mat            |



- |           |              |             |              |              |                   |
|-----------|--------------|-------------|--------------|--------------|-------------------|
| 1 Fitness | 2 Lobby      | 3 Vestibule | 4 Office     | 5 Games      | 6 Social          |
| 7 Kitchen | 8 Activities | 9 Storage   | 10 Restrooms | 11 Gymnasium | 12 Mech/Elec/Plum |





EXIT





GAME ROOM



Strategic placement of glazed openings promote a sense of security and openness while providing a visual connection to the outdoors. Use of wood accents reinforce the presence of nature within the facility.



### **DESIGNING FOR NATURE'S BOUNTY**

Located within Good Hope Park, the property of nearly 13 acres includes softball fields, tennis courts, children's playground, splash park and basketball courts. Surrounded by 5 acres of wooded habitat under forest conservation, it was important to design in concert with nature by considering the built environment as a high-performance environmental steward for the long-term health of the Upper Paint Branch Special Protection Area (SPA). A robust stormwater management plan with ample bio-retention systems, bio-swales, as well as tree protection measures were priorities for the building form and location. A compact building footprint and hardscape were developed within the allowable (SPA) limits resulting in a spatially efficient design that introduces natural daylight and views for interior spaces.

### **THE ARCHITECTURE AS A FRAME FOR NATURE**

The building forms are the result of a program that minimizes overlap among different user groups. Designed for active, quiet, and multi-use zones, the building is thoughtfully organized around the main entry, thereby establishing a communal concourse as a focal element intended to foster social interaction. Interior use of glazed openings maintain visual connections, maximizes daylight potential, and enhances building security. The building entry's glass expanse continues to the North façade, creating contextual appeal with reflections of trees and dappled light while framing the active spaces inside. The custom aluminum perforated screen accentuating the building's entry evokes the surrounding natural setting while functionally serving as a screening element for the building's outdoor mechanical equipment.