



Built and occupied between 1923 and 1996, the Parker Metal Decorating Company building is a series of six one, two and three story masonry buildings in a formerly industrial area of Baltimore.

The canning industry, and its need for decorated metal cans, is long gone, and finding a new use for the building, while preserving it, has been a priority for the city.

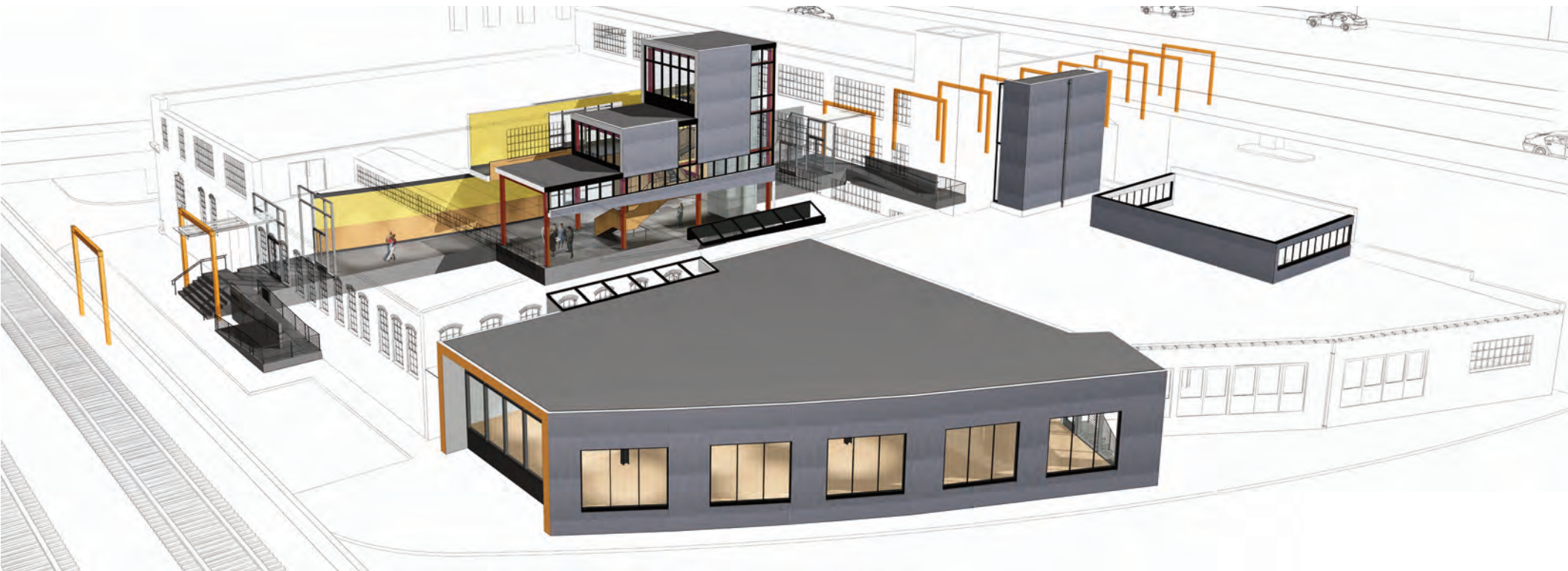
Recently finished, these new uses will be office and showroom spaces as well as a venue for events, performance and celebrations, all complementing the transitioning urban context around the site.

The project is completely surrounded by elevated freeways, train tracks and existing parking lots. As the site has parking on two opposite sides, it was quickly realized that two entries connected by a long gallery-like passage was needed, leading to a centrally located hub with stair and elevator access to all three floors.

Aside from carving out both the long passage and the lobby spaces for circulation very little else was needed to convert from canning to 21st century work and entertainment space. Existing surfaces were left raw and complimented with new unfinished wood and steel elements.

Throughout, the robust original construction is made visible and the history and configuration of the original warehouse structures is made legible.

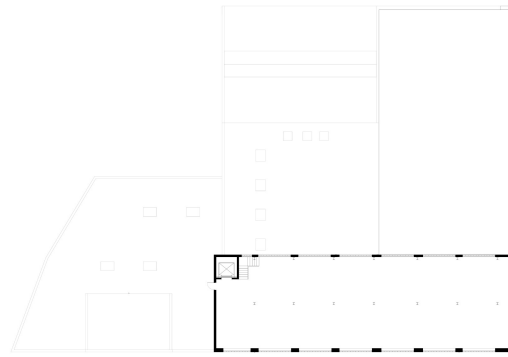




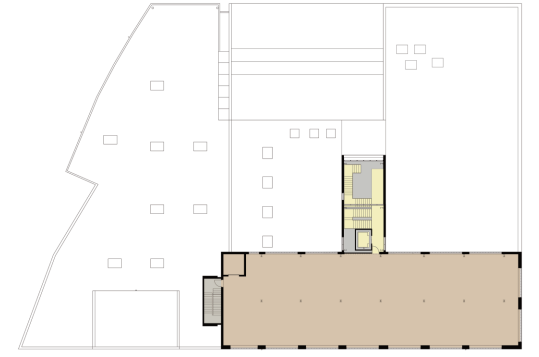




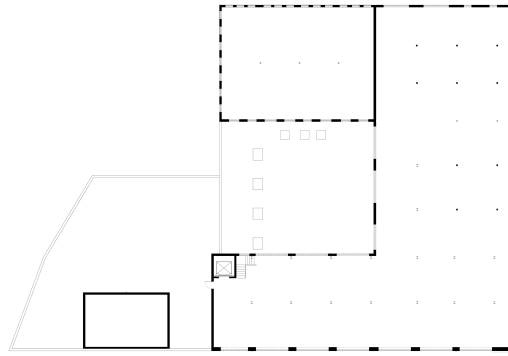




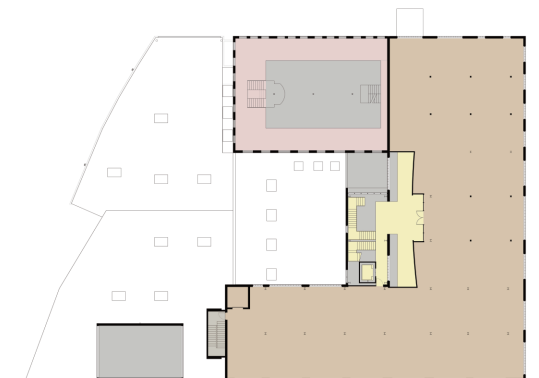
Before 3



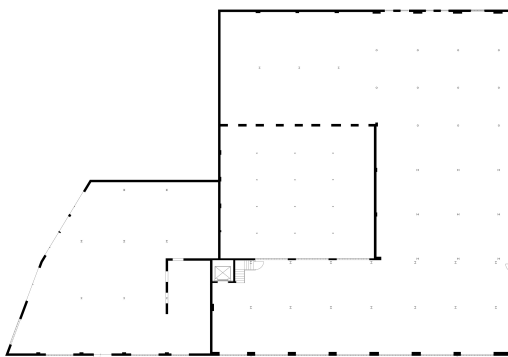
After



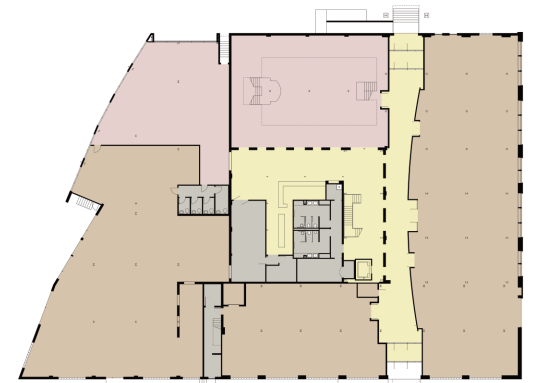
Before 2



After



Before 1



After



















