



NORTH POINT RESIDENCE

Easton, Maryland

Residential Architecture

Located on Maryland's charming Eastern Shore, North Point Residence is a 4-bedroom, 3,750-square-foot waterfront home on the banks of the Tred Avon River. It celebrates the beautiful river views from the property and provides numerous spaces—both indoor and outdoor—to gather, celebrate, and unwind in the beauty of the surrounding landscape.

The home's design employs a language of intersecting rectangular forms and interior-to-exterior planes to express the clean, modern lines the client desired. A main axis runs along the pathway to the house entrance, through the main doorway and foyer, and immediately out to a greenery-filled court with a fire pit and water views beyond, so that guests are immediately confronted with the serene beauty of the river and its natural environment upon entering the home. A secondary axis runs through the hearth, emphasizing its importance as a central design element.

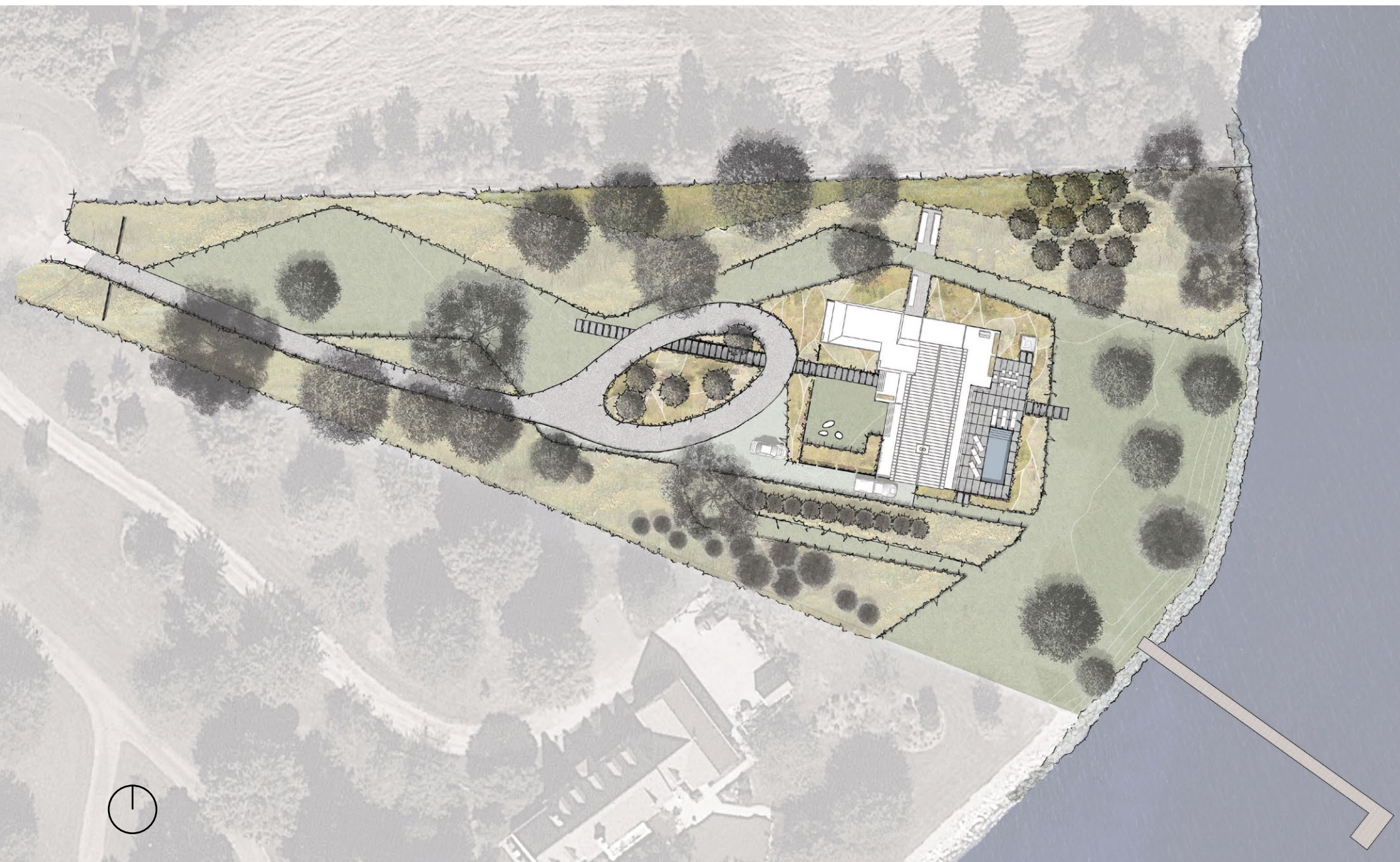
The house is positioned to take maximum advantage of water views, sun, and seasonal wind patterns. Each facade of the home addresses the unique character of the outdoor space it opens onto. The majority of the exterior features cedar siding, echoing the wooded nature of the surrounding area. Accent elements of weathering steel serve to record the passage of time and

its natural processes. Flat-roofed elements support a primary gabled roof component which houses the public spaces and faces the water, featuring large glass openings for generous outdoor views. The choice of a gable roof serves as a reference to historic Maryland tobacco barns. A number of courtyards and terraces, both covered and uncovered, large and small, provide guests with a variety of ways to experience the house's connections between inside and outside.

The project was built with the environment in mind. It uses water-efficient fixtures, recycled ceramic wall tiles, and floor tiles with Cradle to Cradle® Silver certification. Most importantly, it completely revitalized a lot that had sat vacant for 10 years following an unfortunate fire. Newly planted swaths of meadow, perennials, and grasses will contribute to the future health of the local ecology and waterways that are vital to the community. Although the style of the project stands out amongst the traditional older homes in the area, its natural materials seamlessly integrate with the surrounding landscape so that, especially when viewed from the water, the home maintains nature as the focus. It respects its context while providing a source of inspiration and an example of sustainable building in an area very much shaped by natural forces.



South-facing elevation with view of weathering steel-framed entry court



Site plan



West-facing elevation



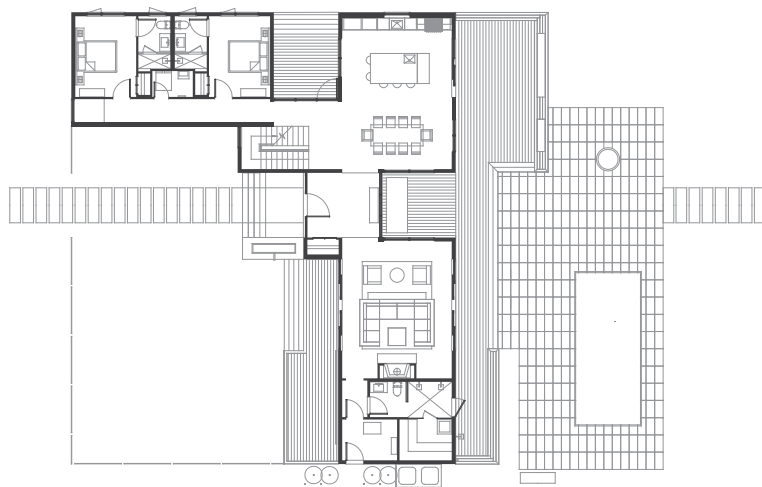
Living room



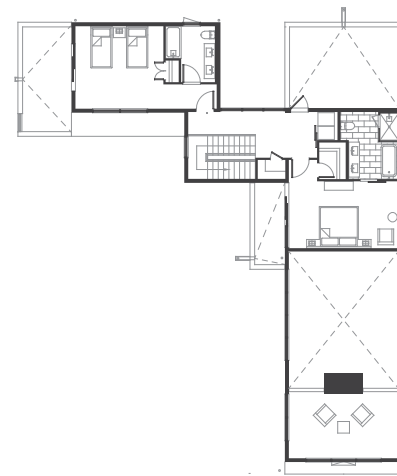
Kitchen



East-facing elevation



First floor plan



Second floor plan



East-facing elevation



Stair



Master bathroom



Interior view from kitchen through entry foyer and into double-height living area, showing greenery-filled recessed court



Bathroom, eave, and kitchen details





Downstairs bedroom and bathroom

West-facing entry approach at twilight