



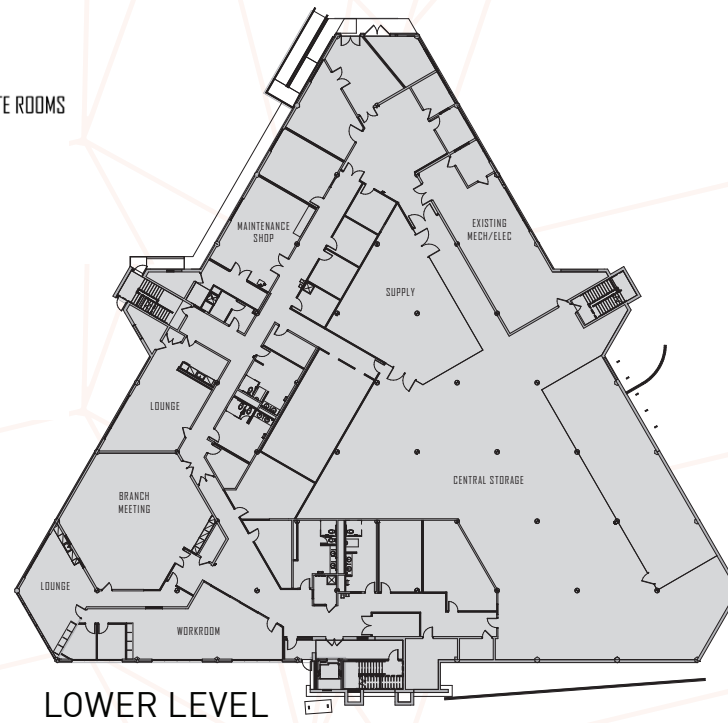
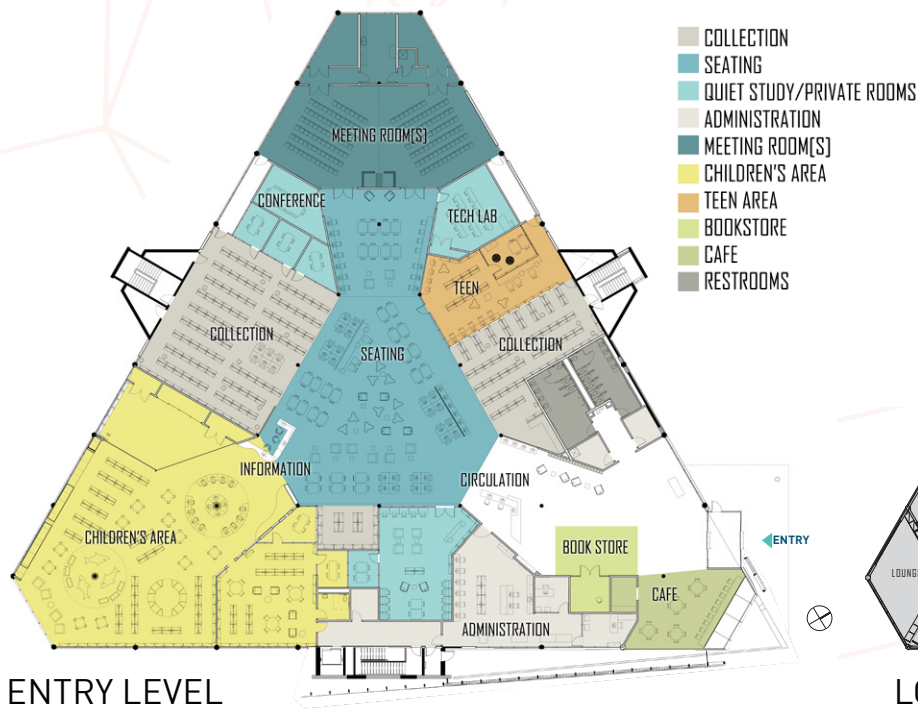
NEW CARROLLTON BRANCH LIBRARY

Institutional | New Carrollton, Maryland

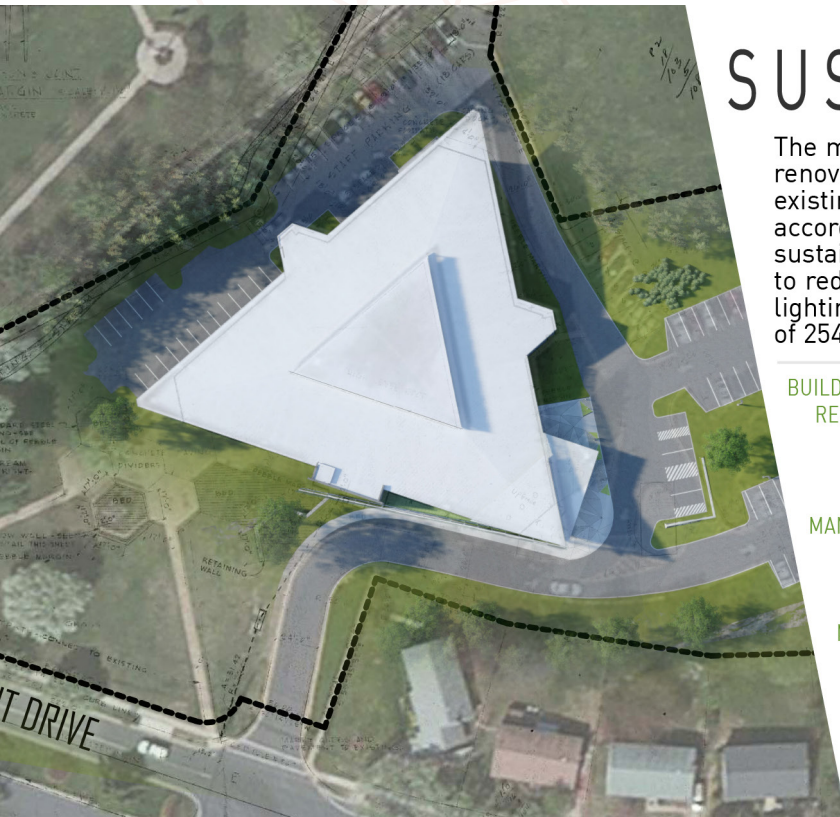
Built in 1971, the existing Brutalist-style structure embraced the architectural Field Theory movement of Walter Netsch and featured a layout comprised of rotated equilateral triangles. Without any major improvements since its opening, the building was failing. This full interior renovation and addition breathes new life into the library creating a welcoming, technology-rich facility that establishes its place as a community anchor and meets the needs of today's library patrons.

Responding to the dynamic shift of libraries from places of quiet study to vibrant centers of community collaboration, the two-dimensional triangular floor plan transforms into a three-dimensional prism that breaks through the former understated entry, framing the new entrance. Seen from afar, this symbol of enlightenment re-establishes the building as a beacon to the community.





The library's interior layout responds to the existing triangular configuration that placed major destinations at each of the three apices: children's collection, public meeting rooms, and a lobby and café area. In keeping with the design technique, a shifted secondary grid of collection space and study rooms creates an orderly kaleidoscopic effect, radiating around the central social space.



SUSTAINABILITY

The most sustainable approach to building is the reuse of existing infrastructure. For this renovation, approximately 75% of the existing structure was retained including 75% of the existing walls, flooring, and roof. Designed under the framework of LEED-NC v3 and in accordance with the county's Clean Renewable Energy Technology (CRET) guidelines, sustainable strategies include the use of native drought-tolerant species, plumbing fixtures to reduce baseline water use, bottle filling stations, high efficiency HVAC equipment, LED lighting, reuse of existing doors and hardware, recycled and local materials, and recycling of 254.14 tons of construction waste.

- Credits Earned:
- +8 Materials & Resources
 - +4 Water Efficiency
 - +13 Indoor Env. Quality
 - +6 Energy & Atmosphere
 - +3 Innovation in Design
 - +3 Regional Priority Credits
 - +8 Materials & Resources



BUILDING REUSE 75%
% of walls, floors, and roofing reused from original building construction

WASTE MANAGEMENT 75%
% of construction waste diverted from landfills

REGIONAL MATERIALS 10%
% of materials used sourced within a 500 mi radius of the site

ADDED GLAZING & DAYLIGHTING 90%
Added glazing allows % of common spaces to have daylight and direct views to the surrounding site

RECYCLING STORAGE & COLLECTION
provided on upper and lower floors to support weekly recycle collection

HEAT ISLAND EFFECT REDUCED
UV resistant TPO roofing used for 100% of roofing membranes

GREEN EDUCATION
library programming and educational signage highlight on-site sustainable features

LIGHTING CONTROL
detection sensor and relay panel control systems fitted with LED fixtures

TRANSPORTATION ALTERNATIVES
bicycle racks and EV charging stations on site; bus stops within 1/4 mi of the building

LIGHT POLLUTION REDUCED
by use of "sharp cut-off" style fixtures with house shields

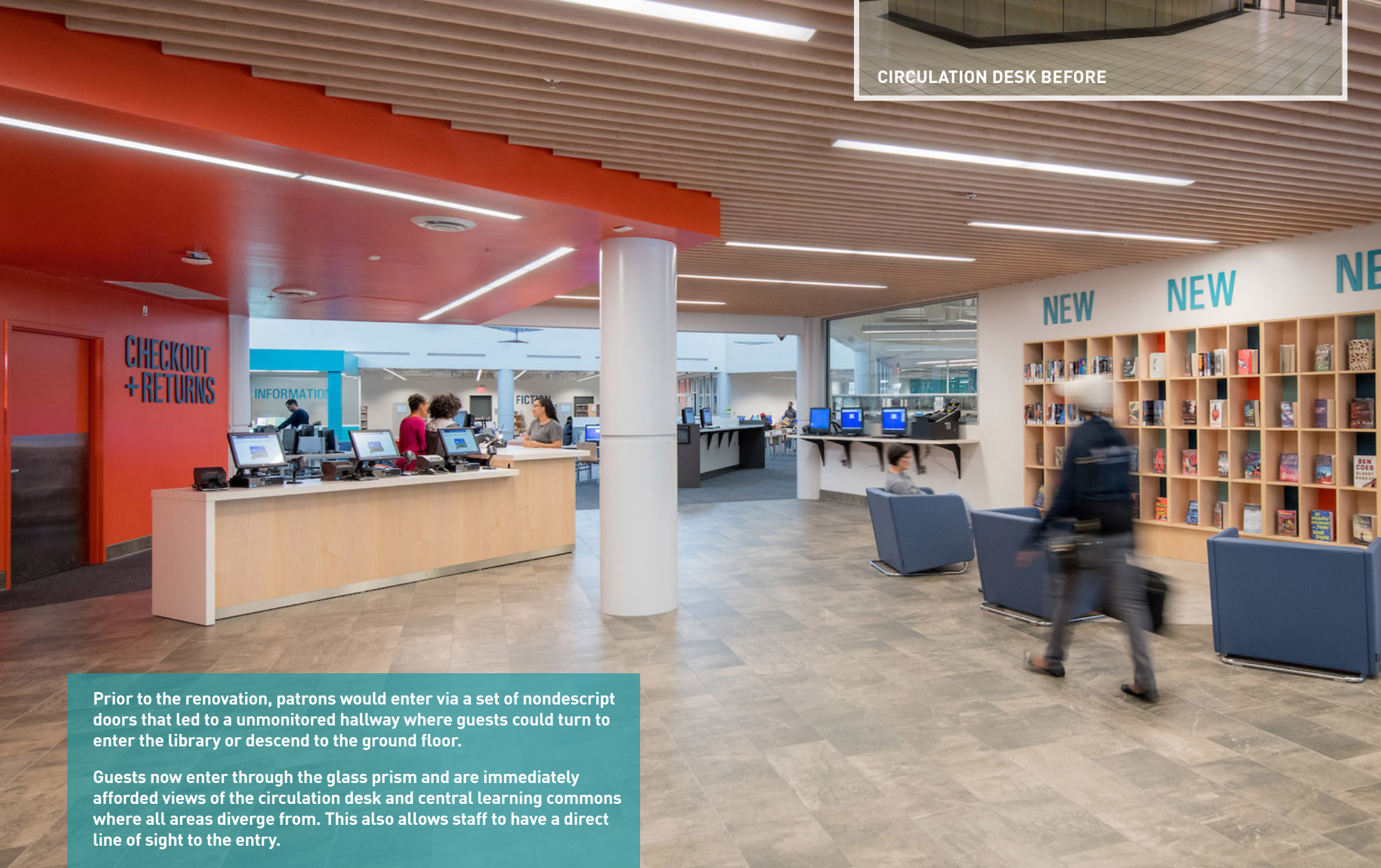
ENERGY PERFORMANCE 14%
overall improved by through use of high efficiency HVAC equipment

WATER EFFICIENT LANDSCAPING
through the use of native & drought tolerant vegetation; eliminates need for potable water use

CIRCULATION DESK



CIRCULATION DESK BEFORE



Prior to the renovation, patrons would enter via a set of nondescript doors that led to a unmonitored hallway where guests could turn to enter the library or descend to the ground floor.

Guests now enter through the glass prism and are immediately afforded views of the circulation desk and central learning commons where all areas diverge from. This also allows staff to have a direct line of sight to the entry.

COMMUNITY SPACE



COMMUNITY SPACE BEFORE



Indicative of its time, the library suffered from a lack of natural light and an emphasis on quiet, solo study. In particular, the dropped ceiling in the central commons made the space feel cavernous. By removing the ceiling and adding natural light, the central commons now has a bright and airy feel.

Modern program elements including study and breakout space for all ages as well as computer training facilities make everyone feel welcome.

TEEN ZONE



CAFE



STUDY SPACE



“We are amazed how the architects were able to transform a 20th Century Brutalist book warehouse into an inviting 21st century library that is a welcoming, collaborative space for the community. The children’s area is bright, colorful, and interactive—truly a destination for local families.”

—Michael Gannon, Interim CEO, Prince George’s County Memorial Library System

CHILDREN'S COLLECTION



While the most popular area of the library, the state of the children's collection did little to encourage, excite, or motivate.

Through age-appropriate theming, including bold graphics, bright colors, and colorful lighting, children of all ages now feel at home. Areas for storytime, individual and group study, and computer stations encourage long and fruitful stays.

DISCOVERY REEF



The Discovery Reef children's collection sparks wonder and curiosity with a 270-gallon salt water aquarium, colorful lighting simulating the underwater experience, a storytime room replicating a deep sea habitat, a glowing bubble tube, reading nooks, two themed study rooms, a homework station, and appropriately-sized themed-furniture.



CHILDREN'S READING NOOK

HOMECWORK STATION

