

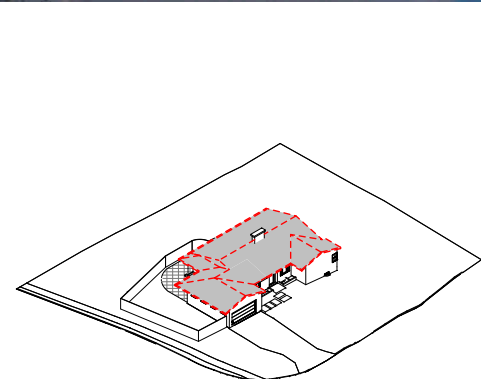
RAMBLER REDUX

Somerset, MD

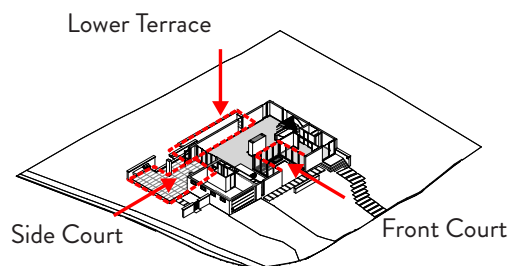
Residential Architecture



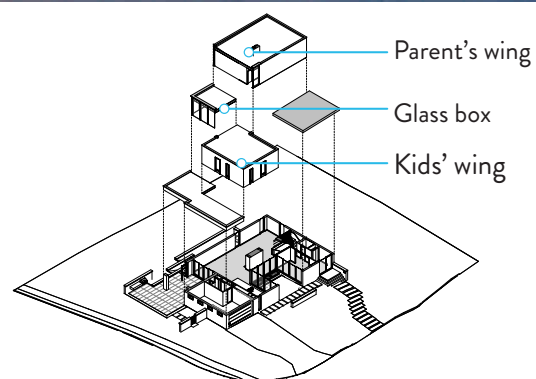
This re-conceived rambler for a family of 4, drawn to the neighborhood's wooded lots, generous setbacks, and large front yards, has been reconfigured within its original footprint to meet contemporary living needs. A new second floor, covered and uncovered courts, and a lower terrace overcome the original layout's small, dark spaces and the added wood clad and glass boxes bring natural light deep into the home. In order to take advantage of an existing but dank basement space and a narrow rear yard, a lower terrace was created to allow full utilization of the lower spaces. The lack of a rear yard space was resolved with a covered court and terrace located to the side of the house, with lush plantings for privacy. The new house remains within the previous footprint, completely transformed into an open, airy, and contemporary home.



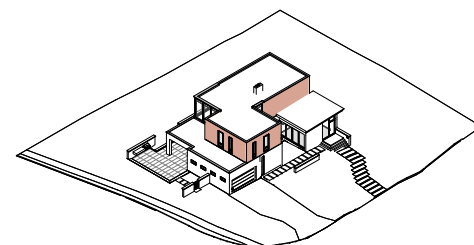
POP THE TOP



BRING THE LIGHT IN



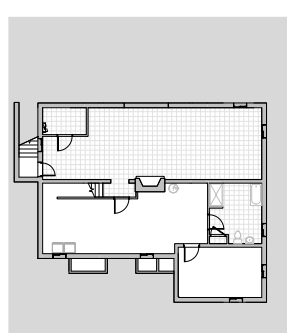
ADD A STORY



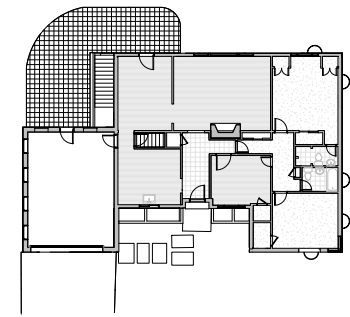
CLAD THE BOXES



Abundant daylight, outdoor courts, and lightly colored exteriors reduce energy consumption, allow for natural ventilation, and reduce solar heat gain. Solar panels, cleverly hidden on 2nd story flat roofs, further minimize the home's impact on the electrical grid.



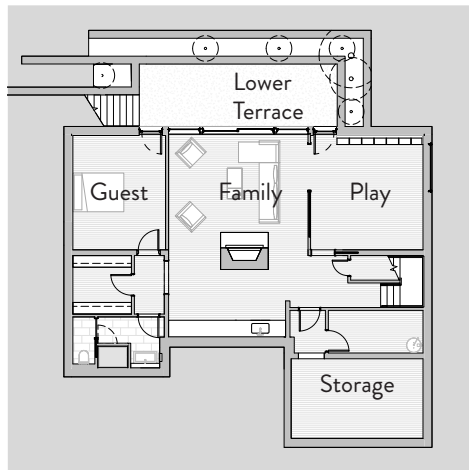
Existing Basement



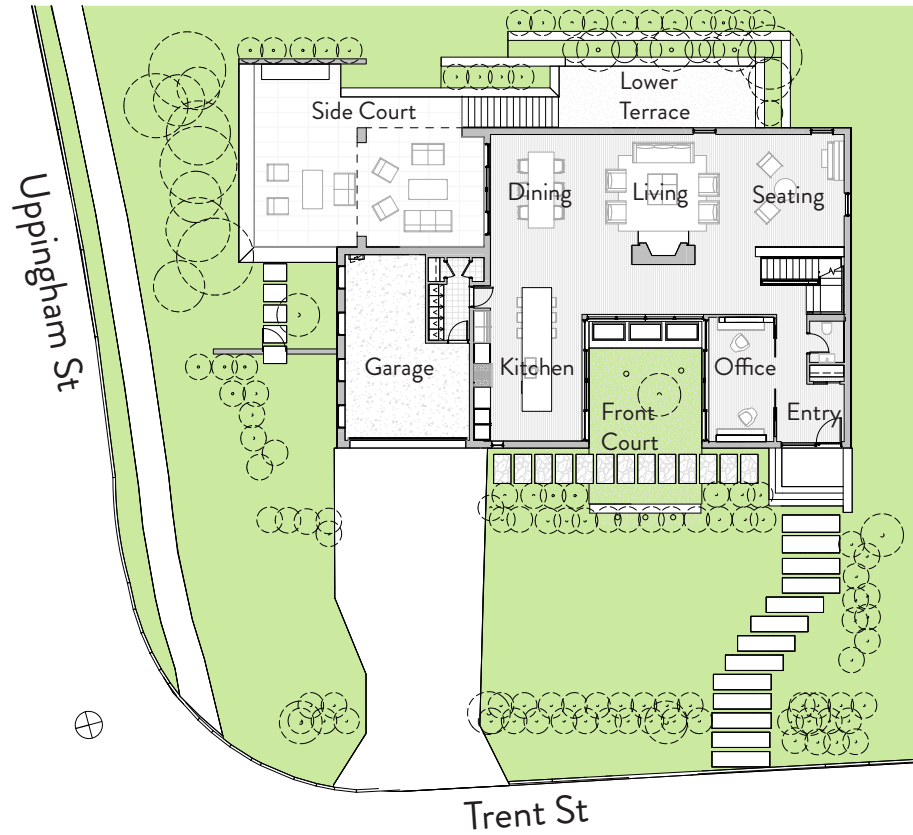
Existing First Floor

Original Home

Basement



First Floor



Second Floor

